





KEY FEATURES

- Porter
- Miele appliances
- Private rear patio
- Herringbone wood flooring
- Built-in surround sound system
- Smallbone kitchen
- Triple glazing

A well-proportioned two-bedroom apartment extending to approximately 1,384 sq ft, set within a red brick mansion block on Upper Montagu Street in Marylebone. The building benefits from portage and lift access and is positioned close to Regent's Park, Baker Street and Marylebone stations.

The apartment has been fully renovated with a focus on functionality and long-term comfort. The open plan reception and kitchen provides a clear entertaining space with direct access to the private patio. The kitchen is fitted with bespoke Smallbone cabinetry and integrated Miele appliances. Both bedrooms are arranged as suites, one incorporating a walk-in wardrobe and the other built-in storage. Finishes include underfloor heating, triple glazed windows and integrated surround sound throughout. A guest W/C and utility space complete the layout.

Upper Montagu Street is located between Baker Street and Montagu Square, close to Regent's Park and the amenities of Marylebone High Street. Transport links include Baker Street Underground Station serving the Bakerloo, Jubilee, Metropolitan, Hammersmith & City and Circle lines, as well as Marylebone station with Chiltern Railways services.



2 BEDROOM



2 BATHROOM





ACCOMMODATION

Reception room

Kitchen and dining area

Principal bedroom with ensuite shower room and walk-in wardrobe

Bedroom two with ensuite shower room

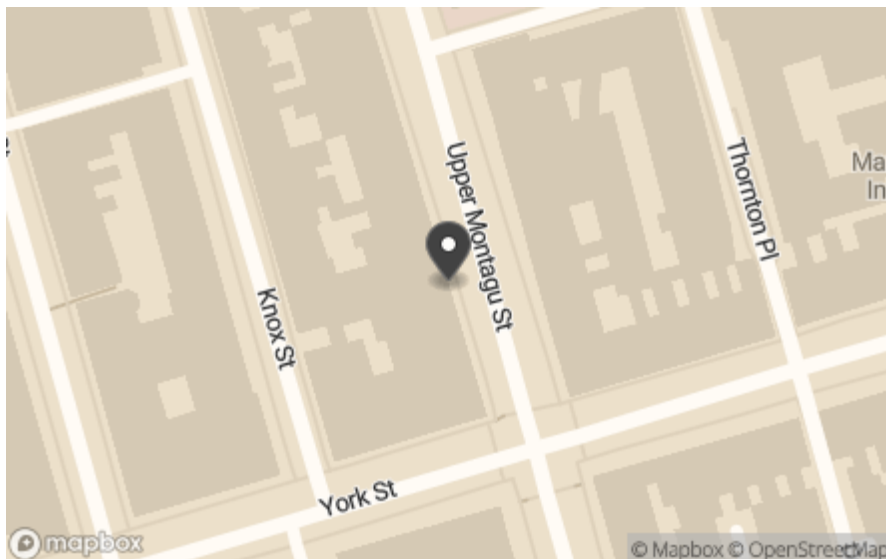
Guest W/C

Utility area

Private patio

LOCATION

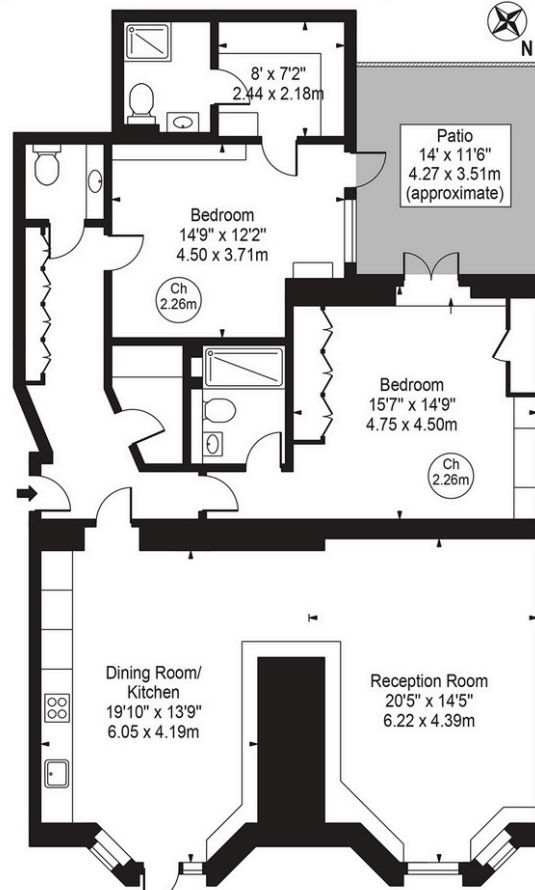
Upper Montagu Street is located between Baker Street and Montagu Square, close to Regent's Park and the amenities of Marylebone High Street. Transport links include Baker Street Underground Station serving the Bakerloo, Jubilee, Metropolitan, Hammersmith & City and Circle lines, as well as Marylebone station with Chiltern Railways services. Both are within a short walk, providing direct access across central London.





York House

Approx. Gross Internal Area 1398 Sq Ft - 129.88 Sq M



Lower Ground Floor

For Illustration Purposes Only - Not To Scale

This floor plan should be used as a general outline for guidance only and does not constitute in whole or in part an offer or contract. Any intending purchaser or lessee should satisfy themselves by inspection, searches, enquiries and full survey as to the correctness of each statement. Any areas, measurements or distances quoted are approximate and should not be used to value a property or be the basis of any sale or let.

TERMS

Price: £1,495,000

Tenure: Share of Freehold

Council Tax Band: G

Viewing: By appointment only

**BEAUCHAMP
ESTATES**

80 St Johns Wood High Street,

London, NW8 7SH

sjw@beauchampstates.com

020 7722 9793

These particulars have been produced as a general guide for this property only and no other purpose. They are not an offer or contract. You should not rely on statements in these particulars or by word of mouth or in writing as being factually accurate about the property, its condition or its value. Neither any primary agent or joint agent has any authority to make or give any representations or warranties in relation to the property, and accordingly any information given is entirely without responsibility on the part of the agents or lessor(s). The photographs show only certain parts of the property as they appeared at the time they were taken. Any areas, measurements and distances given are approximate only. Any reference to alterations to, or use of, any part of the property does not mean that any necessary planning, building regulations or other consent has been obtained nor have any services, equipment or facilities been tested. A lessee should satisfy themselves by inspection or otherwise. The VAT position relating to the property may change without notice. Please contact us for further information regarding the approved Client Money Protection (CMP) scheme and the property redress scheme which we are a member of.

