



Askew Road, W12

£420,000

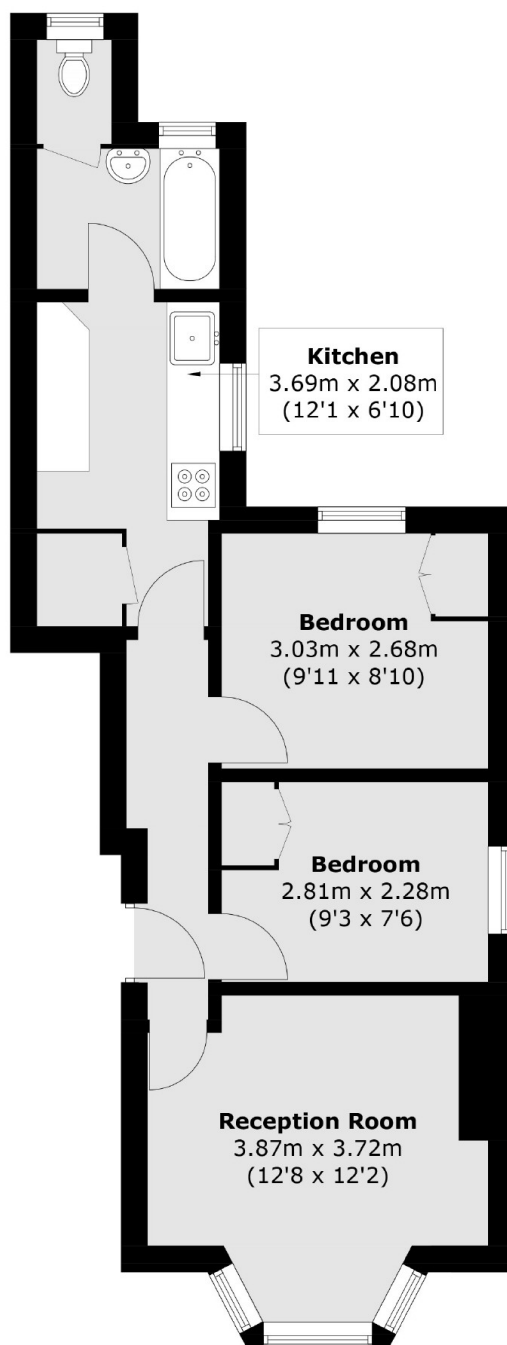
A well presented two bedroom apartment located in the popular Askew Village area. This property on the raised ground floor has a separate kitchen and living room, two double bedrooms and family bathroom. This would make the ideal first time buy or investment as a buy to let.

Located close to Askew Village with many shops, cafes and other amenities. The central, district, hammersmith and city lines are all walking distance and there's easy access in and out the city with the A40.

Features

- Two Bedrooms
- Raised Ground Floor
- Share of Freehold
- Askew Village
- No Chain
- Transport Links

Askew Road, London, W12



Total area (approx.): 45.0 sq. m (484.4 sq. ft)

Dexters

Shepherds Bush and Brook Green
53 Shepherds Bush Green
London
W12 8PS
Sales
020 8740 2900

Energy Rating: D. We aim to make our particulars both accurate and reliable. However they are not guaranteed; nor do they form part of an offer or contract. If you require clarification on any points then please contact us, especially if you're traveling some distance to view. Please note that appliances and heating systems have not been tested and therefore no warranties can be given as to their good working order.

 **RICS** | Regulated
Estate Agent
and Letting Agent

[dexters.co.uk](https://www.dexters.co.uk)