



## Queen's Club Gardens, W14

£485,000

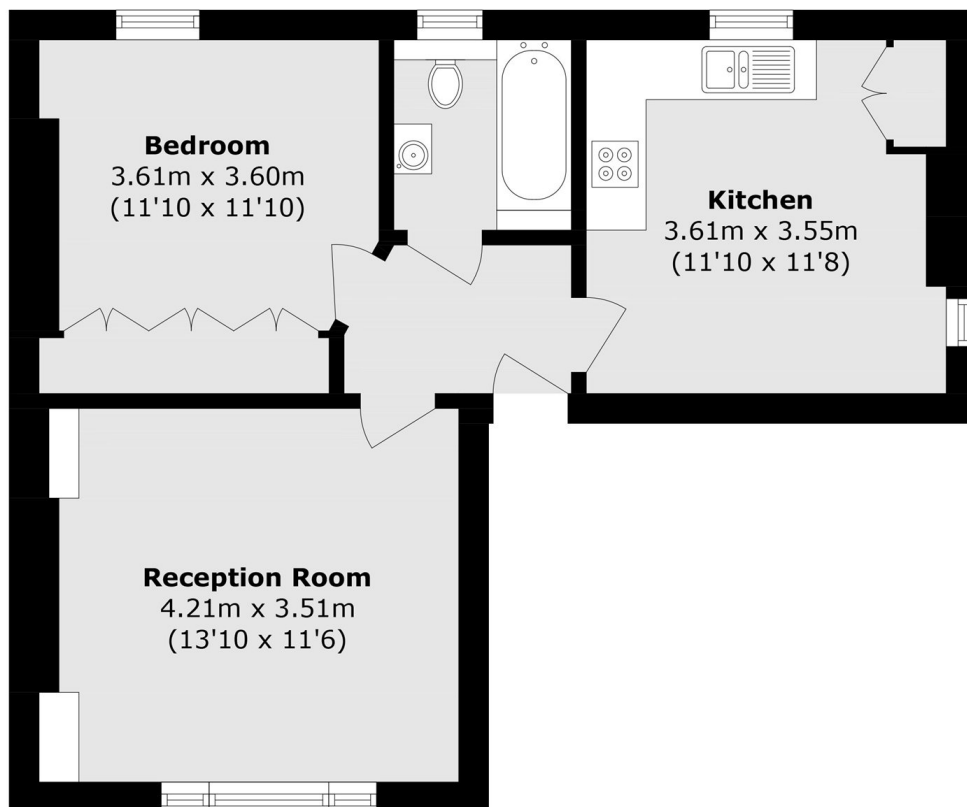
A spacious one bedroom apartment situated in the popular Queens Club, featuring landscaped communal gardens and tennis courts. The property has a large kitchen/diner, a double bedroom with storage and is sold with no onward chain and a 999 year lease.

Queen's Club Gardens is located adjacent to the Queen's Club tennis, close to shops, cafes, bars and restaurants and is only a short walk to Barons Court and West Kensington underground stations.

### Features

- Second Floor
- Tennis Courts
- One Bedroom
- 999 Year Lease
- Close To Tubes
- Ideal First Home

# Queen's Club Gardens, London, W14



## Second Floor

Total area (approx): 48.7 sq. m (524.2 sq. ft)