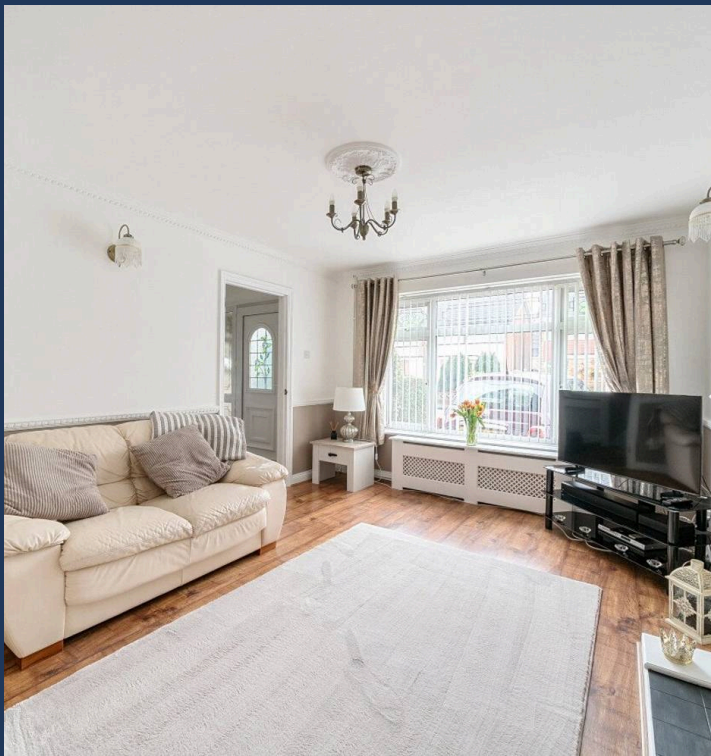




Tangmere Crescent, Hornchurch RM12

£450,000





Tangmere Crescent, Hornchurch RM12

Brookings are delighted to offer for sale this mid-terrace property situated in Hornchurch.

The property comprises of: entrance hallway, reception room, fitted kitchen / dining room.

To the first floor are three bedrooms and a family bathroom. Externally to the front the property has a gated garden with a well stocked garden to the rear.

Located within easy reach of Hornchurch Town Centre which offers quality shopping, restaurants and events during the year. As a shopping destination, Hornchurch caters for all from a large selection of retailers to a range of independent traders, from arts and crafts to high street fashion.

The R J Mitchell Primary School, St Alban's Catholic Primary School, Scotts Primary School and Scargill Infant Schools are all within 0.5 miles.

Elm Park Station is 0.7 miles

Council Tax band: D

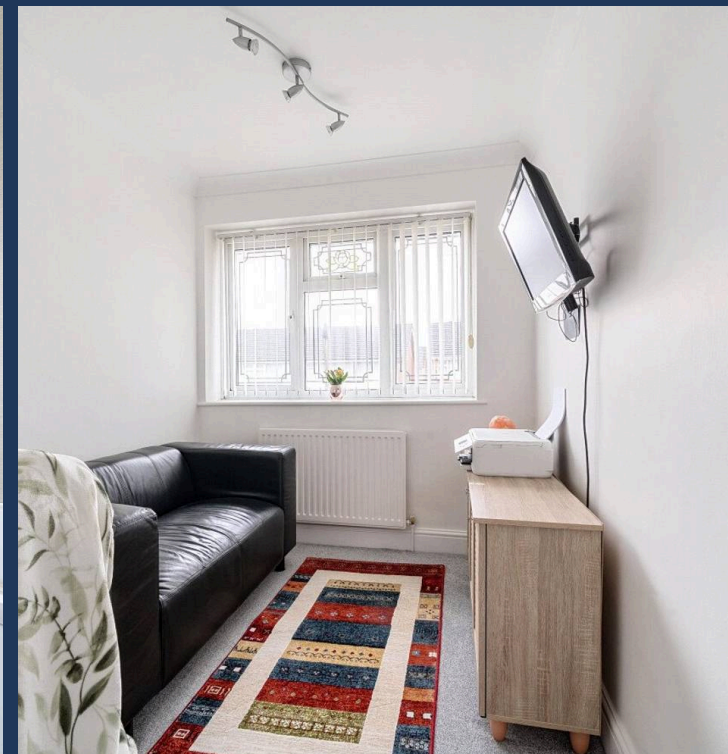
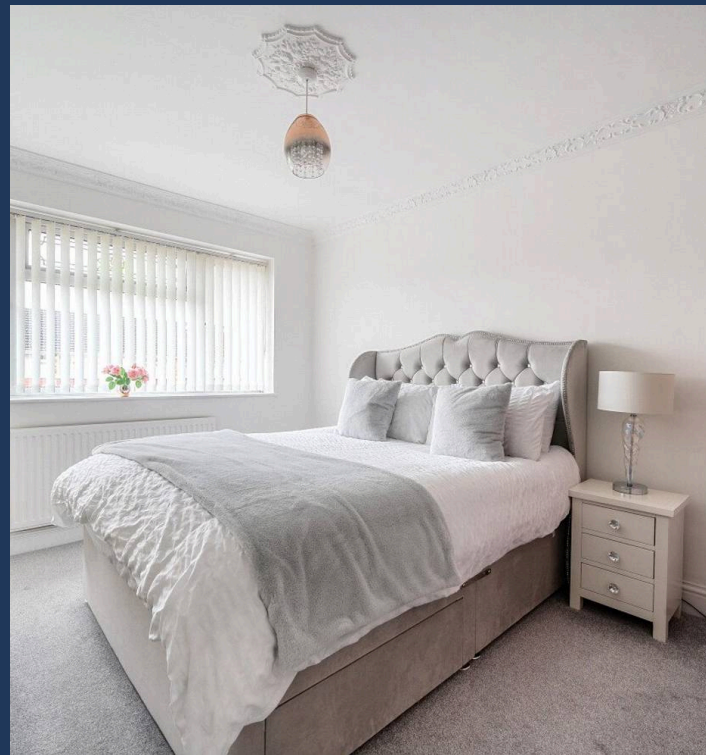
Tenure: Freehold

EPC Energy Efficiency Rating: C

EPC Environmental Impact Rating: C

Tangmere Crescent, Hornchurch RM12

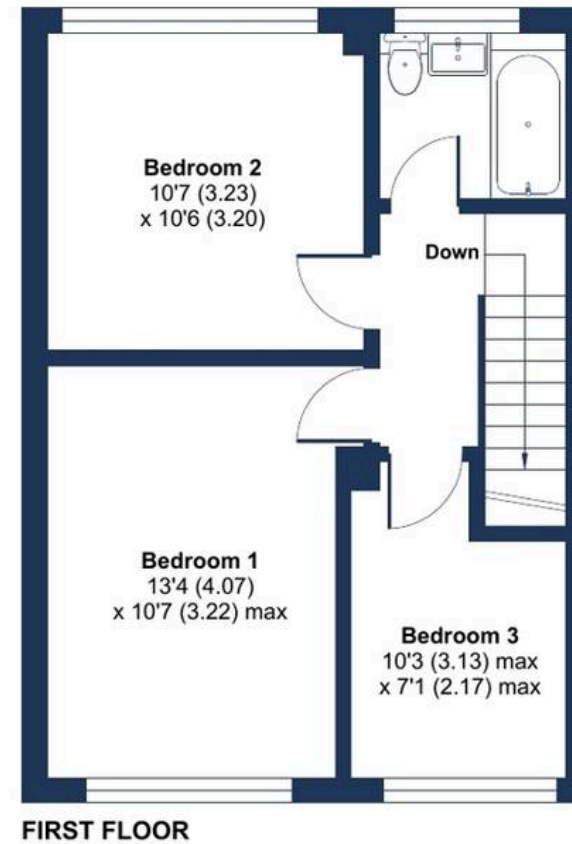
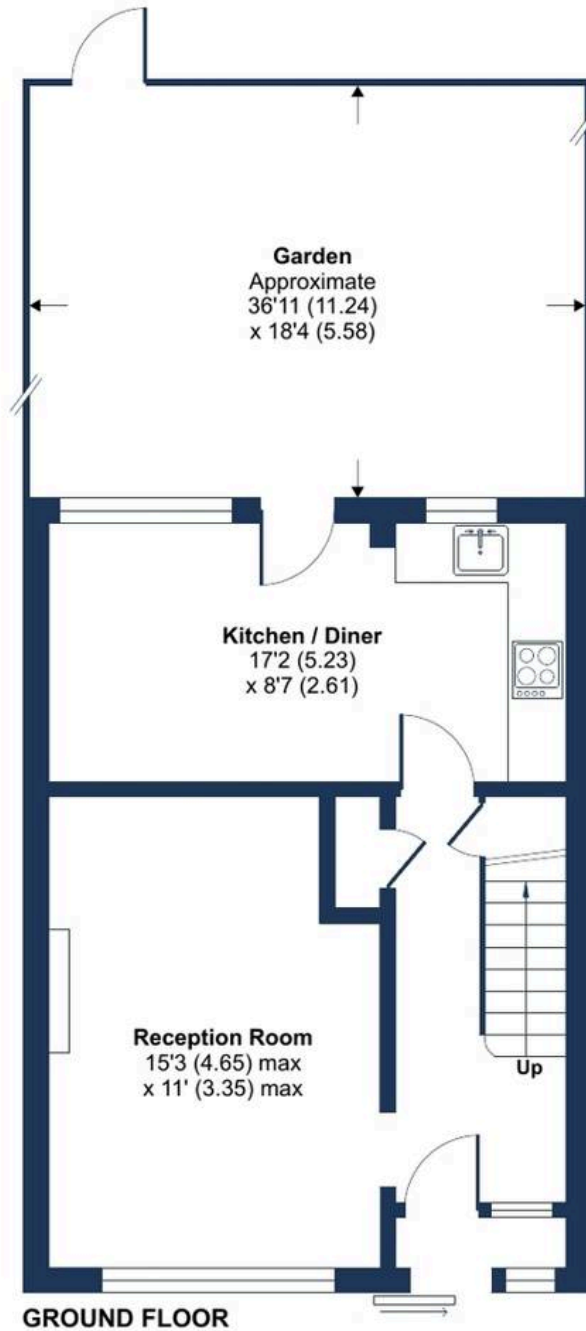
- FAMILY BATHROOM
- MID TERRACE FAMILY HOME
- LOUNGE
- EPC C
- DINING KITCHEN
- THREE BEDROOMS
- GARDENS FRONT AND REAR
- COUNCIL TAX BAND D



Tangmere Crescent, Hornchurch, RM12

Approximate Area = 846 sq ft / 78.5 sq m

For identification only - Not to scale



Floor plan produced in accordance with RICS Property Measurement Standards incorporating International Property Measurement Standards (IPMS2 Residential). © nichecom 2025. Produced for Brookings Estate Agents. REF: 1243495



BROOKINGS

SALES · LETTINGS · MANAGEMENT