



Guide Price
£175,000

**Share of
Freehold**

2x  2x  1x 

**Southdown Court,
Bersted Street, Bognor
Regis, West Sussex
PO22**

cubitt&west
Helping you move forwards



Main features

- Spacious apartment on the outskirts of Bognor Regis town centre
- Boasting an en-suite shower room to bedroom 1
- Juliet balcony off of the lounge
- Convenient for commuting into Chichester
- Ideal first time buy or investment opportunity

Accommodation

FIRST FLOOR

Hall

Lounge: 16'5 x 11'3 (5.01m x 3.43m)

Juliet Balcony

Kitchen: 11'3 x 6'0 (3.43m x 1.83m)

Bedroom 1: 13'3 x 9'5 (4.04m x 2.87m)

En-Suite Shower Room

Bedroom 2: 11'4 x 7'9 (3.46m x 2.36m)

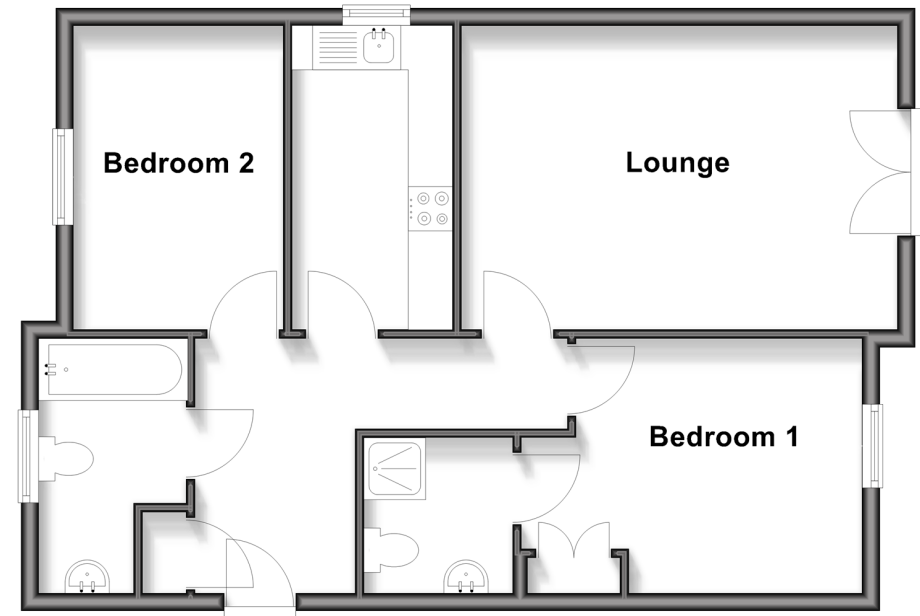
Bathroom

OUTSIDE

Allocated Parking

First Floor

Approx. 59.9 sq. metres (644.5 sq. feet)



Call Bognor - 01243 867632 ■ cubittandwest.co.uk

■ Legal advice should be taken to verify fixtures/fittings, planning, alterations and/or lease details

■ Appliances & services are untested, dimensions are approximate and floor plans are not to scale



40205013/20251127/GS1/