



Cloysters Green

London, E1W

£2,491.67 per month
(£575.00 per week)

A 2 bedroom apartment located moments from St. Katharine's Dock. The property is available furnished and boasts a private patio, large reception and separate kitchen, 2 double bedrooms, bathroom and separate WC.



Cloysters Green

London, E1W

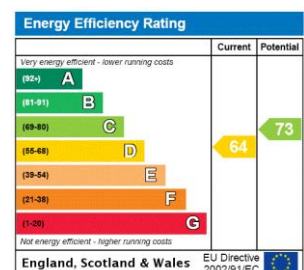
- Two Double Bedrooms
- Two Bathrooms
- Private Patio
- Moments From St. Katharine Docks



A beautifully presented 2 bedroom apartment located moments from St. Katharine Docks. The property is available furnished and boasts a private patio, large reception and separate kitchen, 2 double bedrooms, bathroom and separate WC.

St. Katharine Docks is Central London's only marina, a truly unique location set north side of the River Thames alongside the iconic landmark, Tower Bridge. The area boasts a variety of bars and restaurants surrounding the dock as-well as stunning views of The Shard. Whilst residents can easily walk to The City, the area is well connected with excellent transport links via Tower Hill, Tower Gateway and Fenchurch Street stations

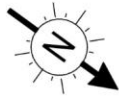
Minimum Term: months
Deposit Required: £2,875.00
Local Authority: Tower Hamlets
Council Tax Band: E
EPC Rating: D
Furnished



Chestertons Tower Bridge Lettings

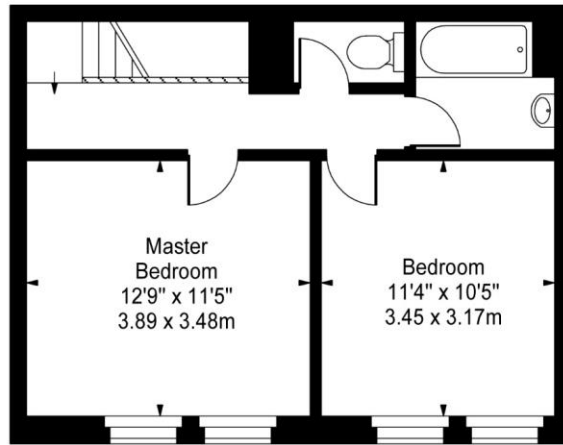
220 Tower Bridge Road
 Tower Bridge
 London
 SE1 2UP
 towerbridge@chestertons.co.uk
 02073576911
 chestertons.co.uk

Additional tenant charges apply (fees apply to non-AST tenancies only)
 Tenancy Agreement Fee: £300
 References per Tenant/Guarantor: £60
 Inventory check (approx. £100 – £250 inc. VAT)
 chestertons.co.uk/property-to-rent/applicable-fees

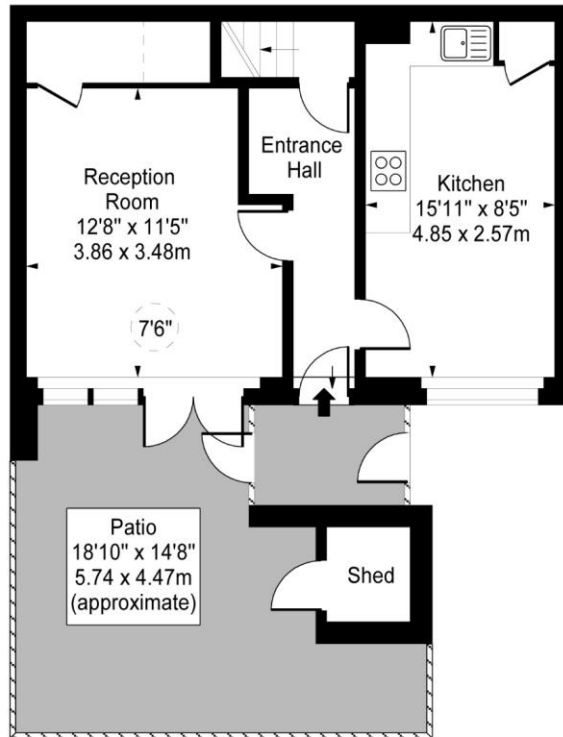


Cloysters Green, E1

 - Ceiling Height



First Floor



Ground Floor

Approx Gross Internal Area **800 Sq Ft - 74.23 Sq M**
(Excluding Shed)

For Illustration Purposes Only - Not To Scale
www.goldlens.co.uk
Ref. No. 012950K

