

Arodene Road, Brixton, SW2

3 bedroom flat - conversion for sale

£735,000

Share of Freehold

Property Details

A substantial three double-bedroom split-level apartment set within a handsome Victorian terraced house. Spanning over 1,100 sqft, this characterful home offers proportions comparable to some three-bedroom houses, arranged across two floors for generous living space and excellent privacy. A traditional entrance leads to an impressive first floor, where a stunning reception room takes centre stage. Flooded with natural light from four large sash windows, it features high ceilings, warm wooden flooring and an elegant fireplace. To the rear, a spacious eat-in kitchen diner provides ample room for cooking and entertaining, with charming cabinetry, extensive worktops and a second feature fireplace. A convenient WC sits adjacent. All three bedrooms are well separated. The principal bedroom occupies the top floor, offering an expansive retreat with skylights and eaves storage. A second bedroom sits quietly to the rear, while the third, centrally located on the first floor, is a versatile double. A stylish main bathroom completes the home and the roof has been recently recovered.

Council tax band D EPC rating D (65)

Features

- Three double bedrooms
- Bathroom plus WC
- Victorian split-level conversion, over 1,100 sqft
- Packed full of character
- Sought-after quiet residential street
- Local cafes, pubs, shops and eateries on the doorstep
- Walking distance to Brixton and Herne Hill town centres
- Brockwell Park close by
- Victoria line and overground
- Share of freehold

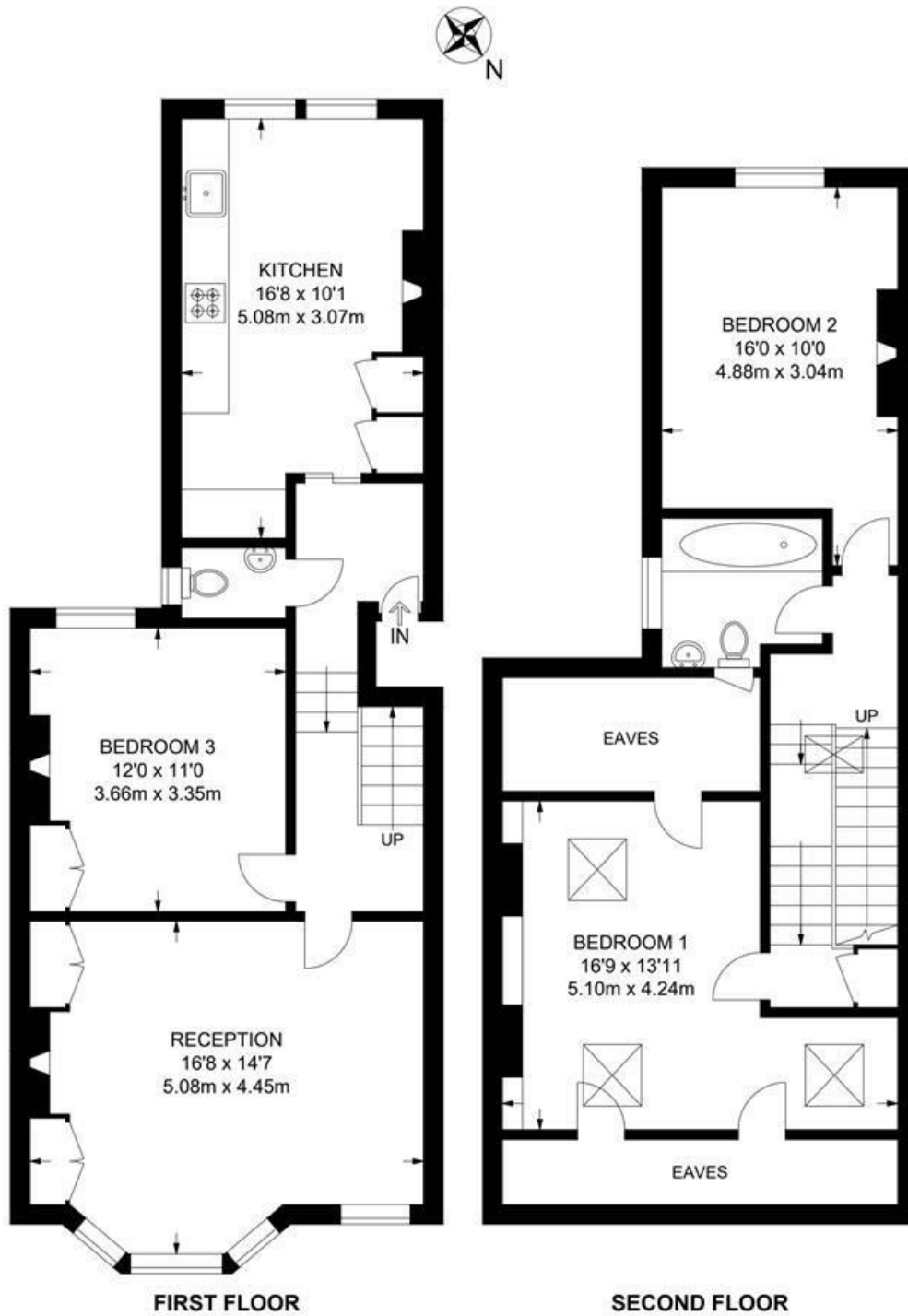




Arodene Road, Brixton, SW2

Arodene Road, SW2
3 Bedroom Flat

APPROXIMATE GROSS INTERNAL AREA: **1109 SQ FT / 103 SQ M**



While we try our very best, floor plans are produced as a guide only and we take no responsibility for the precise accuracy with which any property is represented.

Arodene Road, Brixton, SW2

