

PS

Water's Edge, Flat 4, 68 Twemlow Avenue, Poole Park, Poole - BH14 8AN

For Sale £460,000 | To Let £1,550 pcm

PS



Flat 4 Water's Edge, 68 Twemlow Avenue

Poole Park, Poole

Built by Primetower Properties in 2005, this property is part of an exclusive modern development of just five apartments, presenting a rare opportunity to live in an idyllic waterfront setting. The home is perfectly designed to take full advantage of its surroundings with both bedrooms benefitting from having views across Poole Park and over the boating lake; and the south-east facing lounge has a Juliet balcony with views across the harbour to Brownsea Island and the Purbecks. An added advantage is pets are allowed under licence so a great option for a primary residence or second home.

- First floor apartment
- Lifts to all floors
- Views across Poole Park and boating lake from the bedrooms
- Views of Poole Harbour, Brownsea Island and the Purbecks from the lounge and kitchen
- Spacious with modern fixtures
- Close to mainline train station to London
- Pleasant parkland walk to Ashley Cross or Poole Quay
- Allocated parking space & pets allowed under licence
- Share of Freehold
- Service charge - £1,920 pa
- Council tax band E - £2,625.02
- EPC Rating: B

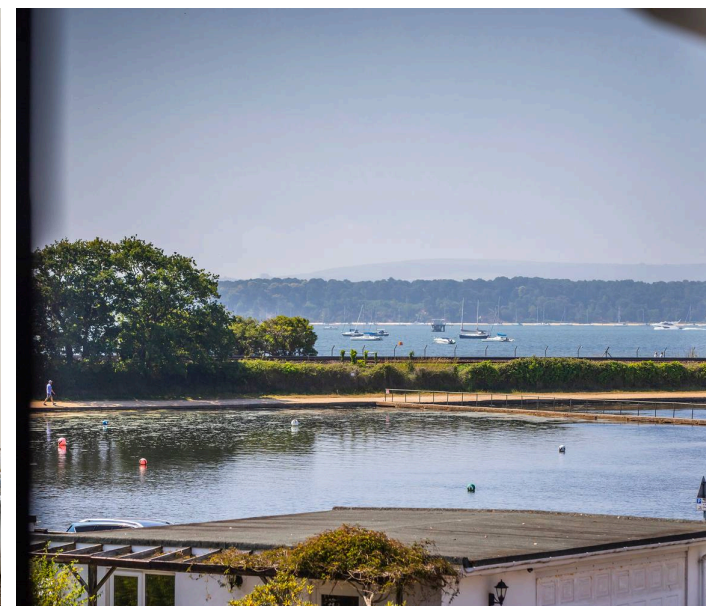
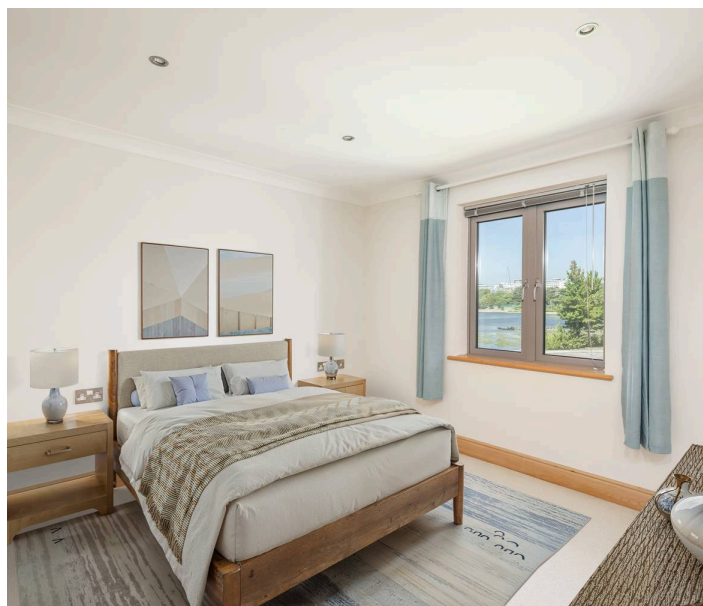


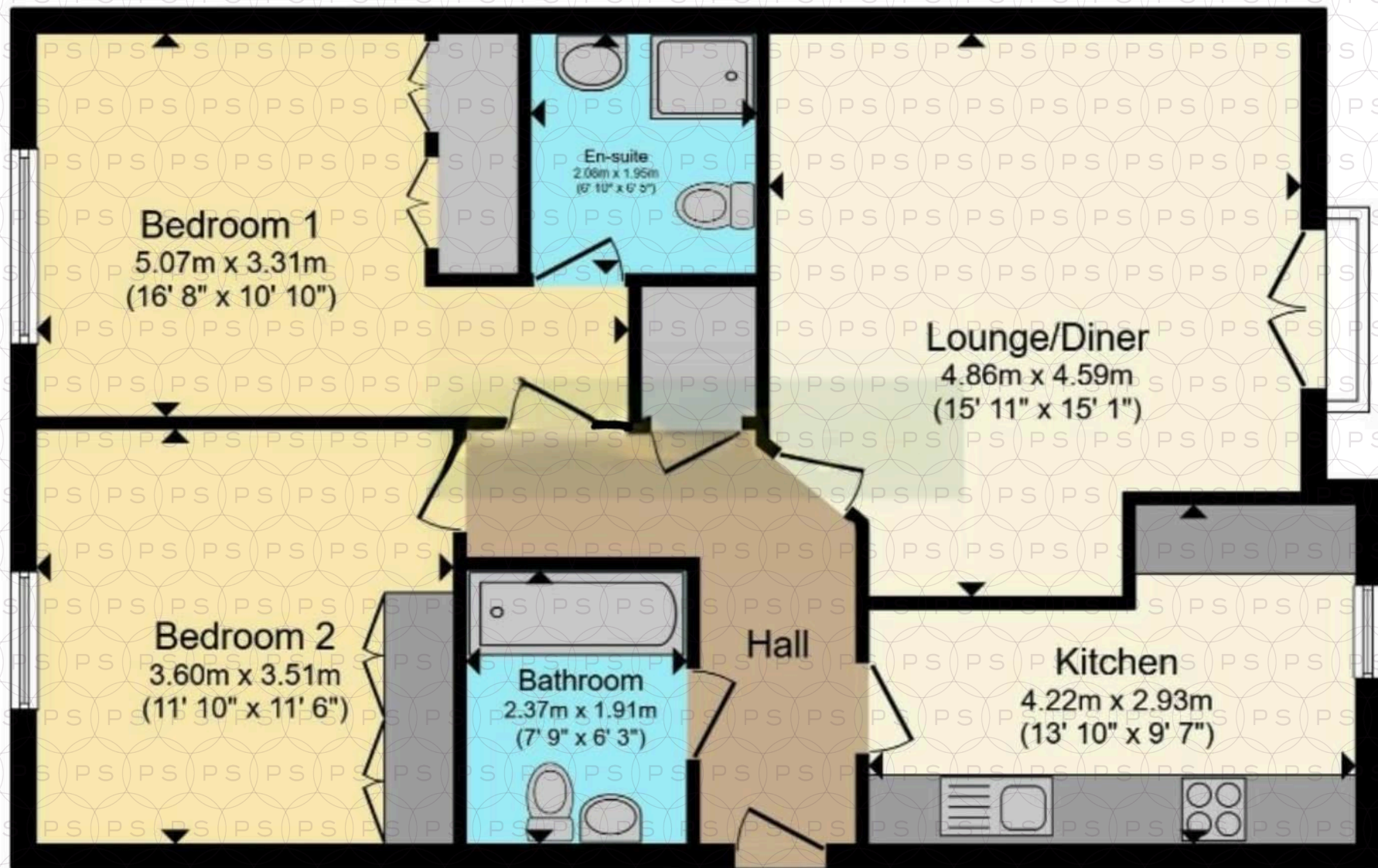
Set within immaculately landscaped grounds, this modern first floor apartment features a south-east facing bright and airy living and dining area, with large French doors and a Juliet balcony framing the serene harbour views. The well-equipped, modern kitchen features granite work surfaces with built in Neff appliances including fridge, separate freezer, integral dishwasher, washer-drier, microwave and oven, and a convenient breakfast bar, with an opening into the dining area making it both stylish and functional. The generously sized primary bedroom also enjoys both lake and park views and features fitted wardrobes and an ensuite shower room. Guests also benefit from lake and park views, fitted wardrobes and sole use of the family bathroom.

Outside, the beautifully maintained communal gardens offer an ideal space for relaxing outdoors. Additionally, it comes with one allocated parking space, a lockable outside store for the sole use of the flat, as well as access to the shared cycle store. The property is offered with no forward chain, making it a seamless opportunity for prospective buyers. As part of a self-managed block, the residents collectively own a share of the freehold, ensuring a sense of community and control over the building's management.

Located directly on the edge of Poole Park, the apartment offers immediate access to scenic walking routes, cafes and local amenities. Poole Quay, Baiter Park, and Whitecliff Harbourside Park are all nearby, with recreational facilities such as golf, tennis and yacht clubs within easy reach. The golden beaches of Sandbanks are just 2.5 miles away, offering stunning coastal walks and watersports. Transport links are excellent, with mainline train stations at Poole and Parkstone (Ashley Cross) connecting to London Waterloo in approximately two hours. This apartment is the perfect blend of luxurious living, breathtaking views and convenience in an unbeatable location.

Please note that the second bedroom is showing images that are generated via AI.





Total floor area 77.5 m² (835 sq.ft.) approx

This floor plan is for illustrative purposes only. It is not drawn to scale. Any measurements, floor areas (including any total floor area), openings and orientation are approximate. Details are guaranteed, they cannot be relied upon for any purpose and they do not form part of any agreement. No liability is taken for any error, omission or misstatement must rely upon its own inspection(s). Powered by www.focalagent.com



Philippa Sole Ltd

Philippa Sole 3A Springfield Road, Ashley Cross - BH14 0LG

01202 747999 • enquiries@philippasole.co.uk • www.philippasole.co.uk

All statements in these particulars are made without responsibility on the part of Philippa Sole Ltd or the vendor. Neither Philippa Sole Ltd nor anyone in its employment or acting on its behalf has the authority to make any representation or warranty in relation to this property, detailed survey or tested services and fittings. Room sizes are approximate.