

George Street, W7

£530,000

This charming and well-maintained brick-fronted Victorian cottage is offered to the market with no onward chain.

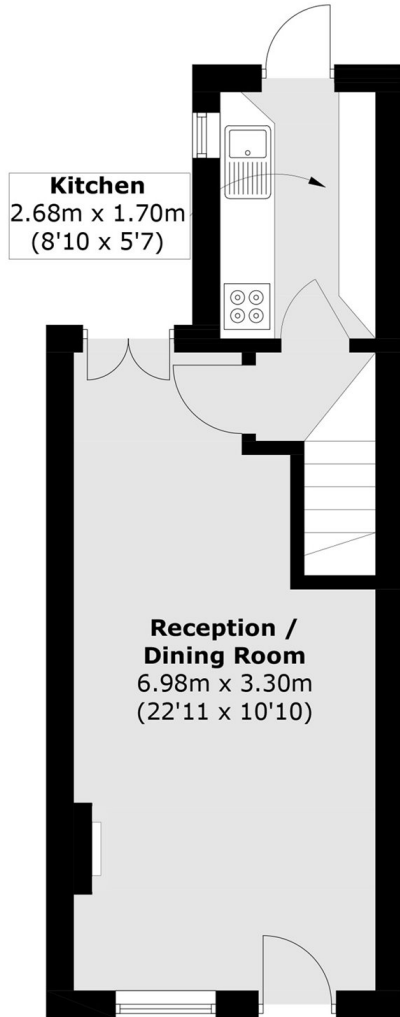
The property retains attractive period features and has been fully extended into the loft, providing 767 square feet of well-arranged accommodation across three floors. It comprises a separate kitchen, two double bedrooms, two bathrooms, and an additional study room.

Ideally situated close to excellent public transport links and a wide range of local shops and amenities.

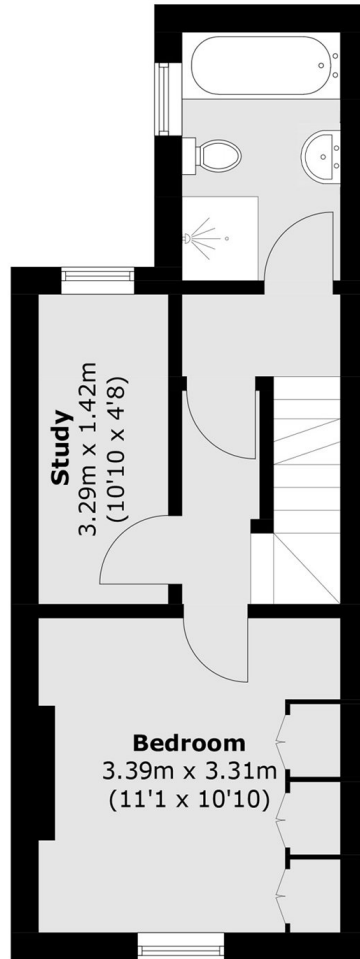
Features

- Freehold House
- End of Terrace
- Two Bedrooms
- Two Bathrooms
- Close to Transport
- No Onward Chain

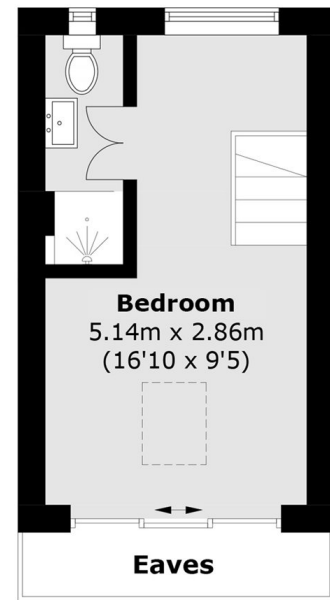
George Street,
London, W7



Ground Floor



First Floor



Second Floor

Total area (approx.): 71.3 sq. m (767.4 sq. ft)
(Excluding Eaves)