



Acre Lane, Brixton, SW2

1 bedroom flat - purpose built for sale

£430,000

Leasehold

Property Details

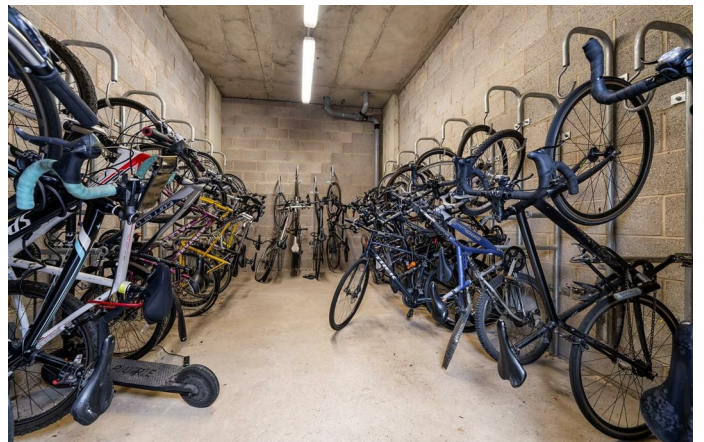
A wonderfully bright and airy one double bedroom apartment with a private terrace boasting far-reaching views of the London skyline. Set securely on the top floor of a sought-after modern development on Acre Lane, this stylish home sits between Clapham and Brixton, moments from the vibrant amenities both areas are renowned for. Tucked peacefully to the rear of the building, the property enjoys privacy and an abundance of natural light, enhanced by floor-to-ceiling windows. The open-plan reception is ideal for relaxing or entertaining, with ample space to lounge, dine and cook in the sleek, integrated kitchen. The private terrace, sheltered by glass balustrades, offers an enviable spot to unwind while taking in the fantastic skyline views. The extremely spacious bedroom enjoys the same impressive views, complete with space for a king sized bed, fitted wardrobes and soft carpets this tranquil retreat is surprisingly quiet. A modern bathroom, generous hallway storage, lift access, bike storage, and landscaped communal gardens complete this elegant, energy-efficient home in a prime location.

Features

- One extremely spacious bedroom
- Private terrace with unobstructed London Skyline views
- Secure modern development
- Bright and airy top floor apartment
- Lift, resident's garden and secure bike storage
- Fantastic array of amenities in every direction
- Clapham High Street an eight-minute stroll
- Central Brixton a ten-minute walk
- Northern, Victoria and Overground lines
- Chain-free

Council tax band C EPC rating B (82)

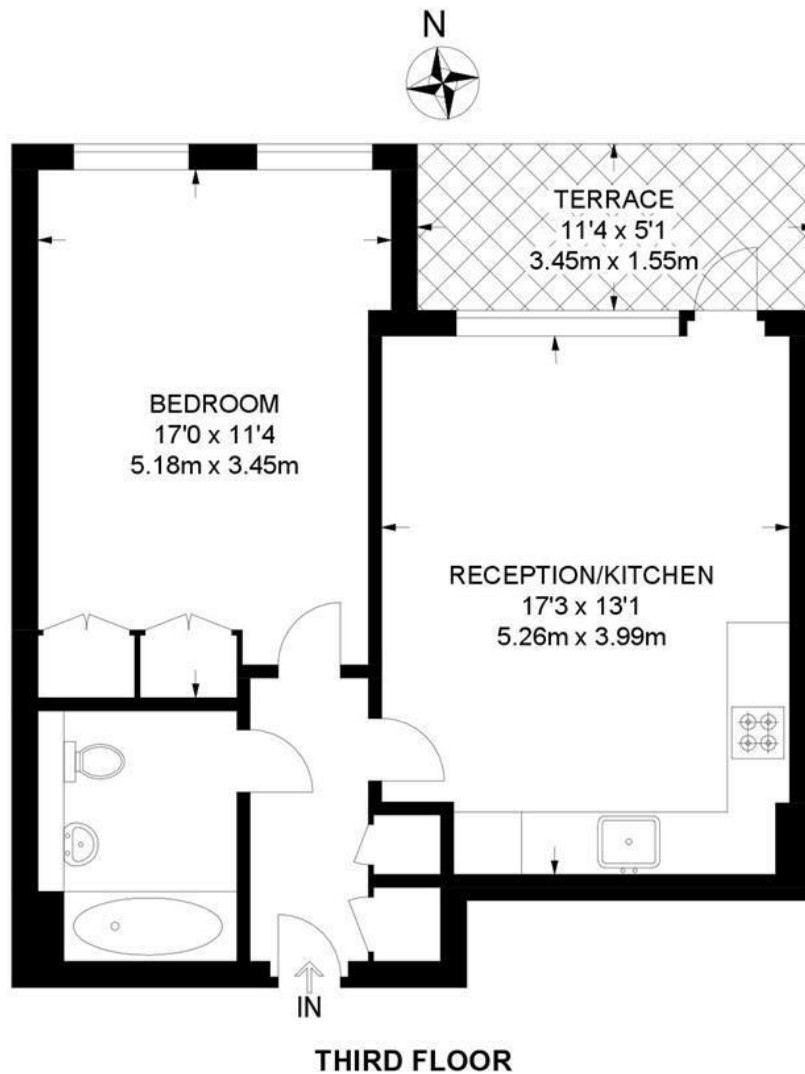




Acre Lane, Brixton, SW2

Acre Lane, SW2
1 Bedroom Flat

APPROXIMATE GROSS INTERNAL AREA: **520 SQ FT / 48 SQ M**



While we try our very best, floor plans are produced as a guide only and we take no responsibility for the precise accuracy with which any property is represented.

Acre Lane, Brixton, SW2

