



28c Westminster Way, Oxford, Oxfordshire, OX2 0LW

£1,400 PCM - 31st January 2026

- Ground floor
- Parking for One Car
- Council Tax Band B
- One bedroom
- Communal Gardens & Secure Bike Storage
- EPC band B
- Unfurnished with white goods
- Gas Central Heating
- Mains gas, electricity and water

28c Westminster Way, Oxford OX2 0LW

A one bedroom first floor apartment finished to a high standard with easy access to Oxford City Centre. Double Bedroom with fitted wardrobes. Shower room, Open plan style Living/Dining room/Kitchen - fully fitted with oven, gas hob, fridge/freezer, dishwasher and washer/dryer, Gas central heating, Communal garden. Secure bicycle storage, Parking for one car.

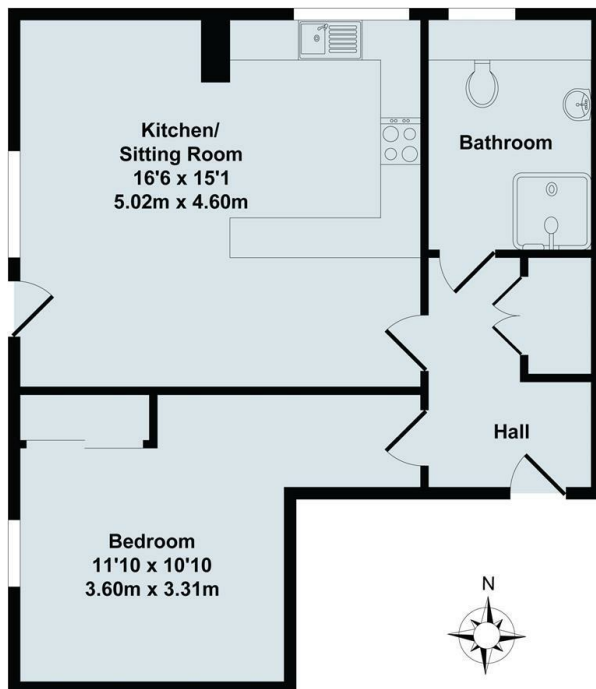
PLEASE NOTE: PHOTOS TAKEN PRIOR TO TENANCY STARTING



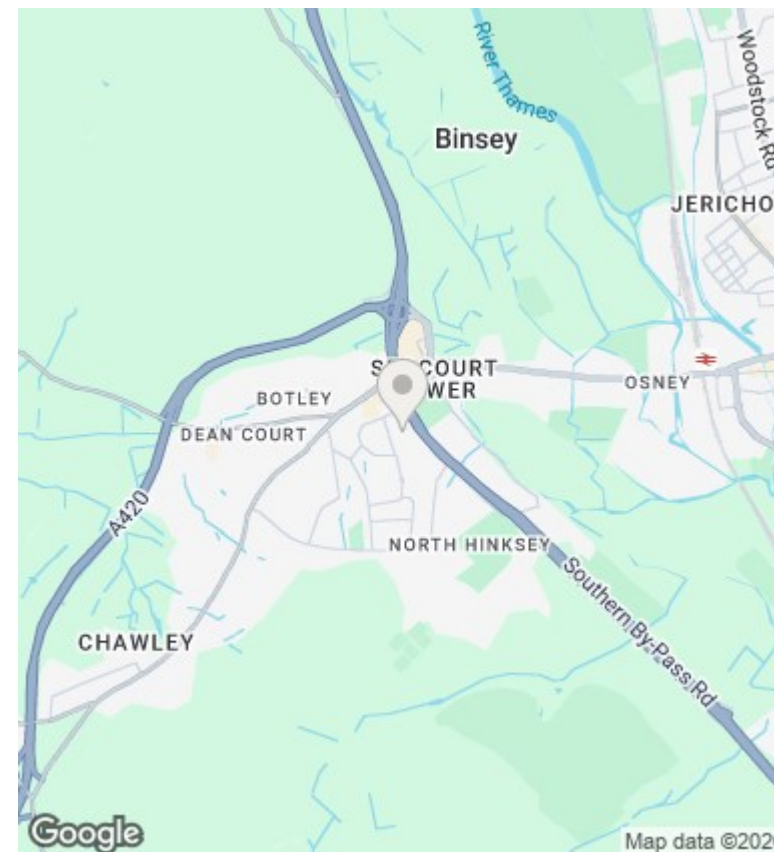
Council Tax Band: B



Modern one bedroom ground floor apartment finished to a high standard. Easy access to Oxford City Centre. Double bedroom with fitted wardrobes, Bathroom with shower over, Open plan style Living/Dining room/Kitchen - fully fitted with oven, gas hob, fridge/freezer, dishwasher and washer/dryer, Doors to garden, Gas central heating, Communal garden. Secure bike store.



Total Approx. Floor Area 538 Sq.Ft. (50.0 Sq.M.)
 All items illustrated on this plan are included in the "Total Approx Floor Area"



Directions

Viewings

Viewings by arrangement only. Call 01865 515900 to make an appointment.

Council Tax Band

B

Energy Efficiency Rating		
	Current	Potential
Very energy efficient - lower running costs		
(92 plus) A		
(81-91) B	83	83
(69-80) C		
(55-68) D		
(39-54) E		
(21-38) F		
(1-20) G		
Not energy efficient - higher running costs		
England & Wales	EU Directive 2002/91/EC	