



PCM

**£2,450 PCM**

**Meath Crescent**

London, E2 0QL



Two bedroom, two bathroom apartment with private balcony and views over Meath Gardens. Set within a popular gated development close to Bethnal Green tube.

Comprising of a bright and spacious open plan reception room to fully fitted kitchen, access to private balcony with views over Meath Gardens, modern bathroom suite, two good sized double bedrooms with one en-suite shower room.

Excellent transport links including Bethnal Green, Mile End and Stepney Green tube stations making access into the City very easy.

Offered furnished.

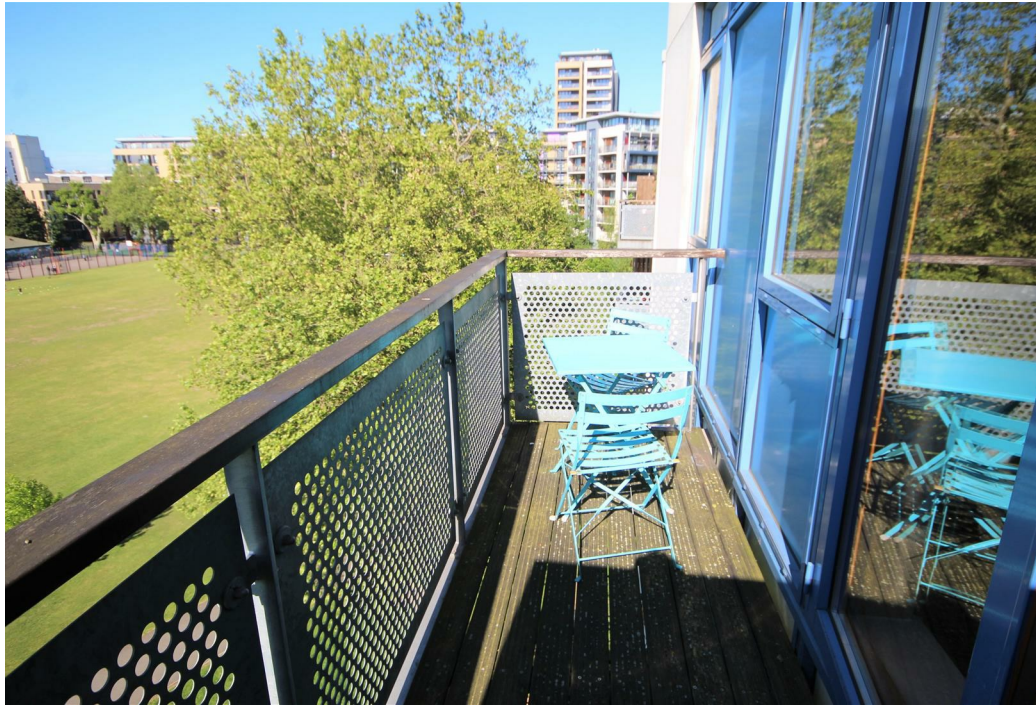
12 month contract: break clause subject to offer

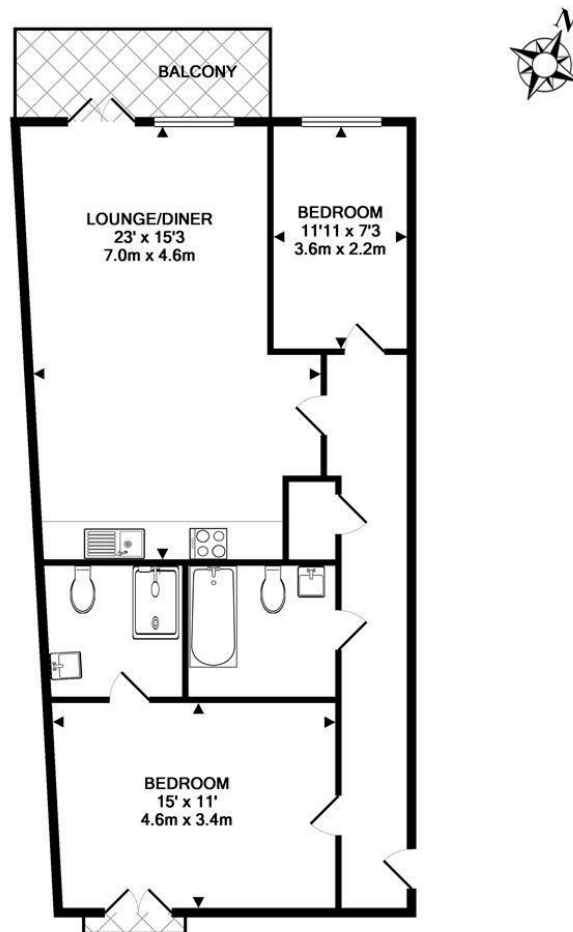
Council tax: Band C

5 week deposit: £2826.92









TOTAL APPROX. FLOOR AREA 791 SQ.FT. (73.4 SQ.M.)

Whilst every attempt has been made to ensure the accuracy of the floor plan contained here, measurements of doors, windows, rooms and any other items are approximate and no responsibility is taken for any error, omission, or mis-statement. This plan is for illustrative purposes only and should be used as such by any prospective purchaser. The services, systems and appliances shown have not been tested and no guarantee as to their operability or efficiency can be given

Made with Metropix ©2019

Energy Efficiency Rating		
	Current	Potential
Very energy efficient - lower running costs		
(92 plus) <b>A</b>		
(81-91) <b>B</b>		
(69-80) <b>C</b>	80	85
(55-68) <b>D</b>		
(39-54) <b>E</b>		
(21-38) <b>F</b>		
(1-20) <b>G</b>		
Not energy efficient - higher running costs		
<b>England &amp; Wales</b>	EU Directive 2002/91/EC	

Agents Note: Whilst every care has been taken to prepare these particulars, they are for guidance purposes only. All measurements are approximate and are for general guidance purposes only and whilst every care has been taken to ensure their accuracy, they should not be relied upon and potential buyers/tenants are advised to recheck the measurements

**OFFICE ADDRESS**  
88 Cheshire Street  
London  
E2 6EH

**OFFICE DETAILS**  
0207 739 6969  
info@peachproperties.com  
www.peachproperties.com