

# KILN & LODGE

ESTATE AGENTS : REDEFINED



## 29 Lakeside Oaklands Holiday Park, Colchester Road

St. Osyth, Clacton-On-Sea, CO16 8HW

Asking price £60,000



2



2



1



# 29 Lakeside Oaklands Holiday Park, Colchester Road

St. Osyth, Clacton-On-Sea, CO16 8HW

Asking price £60,000



## Entrance

Entrance door, open to:

## Kitchen/Diner/Living Area

20'10 x 12'7 (6.35m x 3.84m)

Window to side, Patio doors to Terrace overlooking lake.

The kitchen consists of a range of fitted storage cupboards. Integrated washing machine and microwave. There's space and plumbing for the fridge/freezer and gas oven.

The living area is carpeted with a feature fireplace and space for a dining table and soft furnishings.

## Inner Hallway

10'5 x 2'7 (3.18m x 0.79m)

## Bathroom

6'5x 5'7 (1.96mx 1.70m)

Window to side. A panelled bath, wash hand basin and close coupled WC.

## Bedroom One

9'2 x 7'1 (2.79m x 2.16m)

Window to rear, fitted storage cupboards. Door to additional storage cupboard. Door to

## Ensuite

6'8 x 3'5 (2.03m x 1.04m)

Window to side. Shower cubicle. Wash hand basin. Close coupled WC.

## Bedroom Two

9'8 x 4'2 (2.95m x 1.27m)

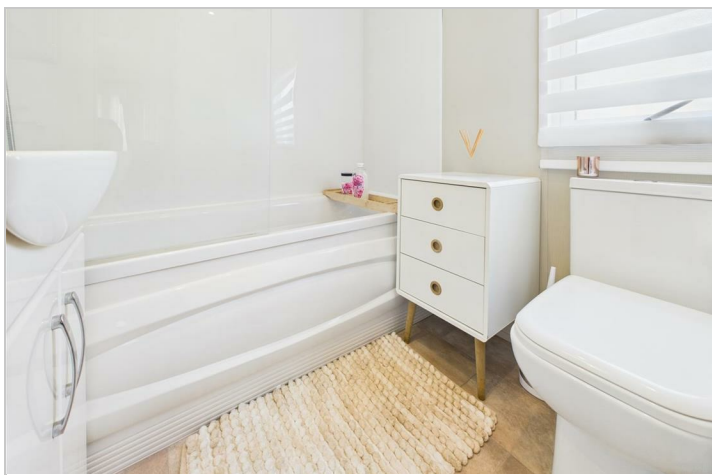
Window to side. Fitted storage

## Exterior

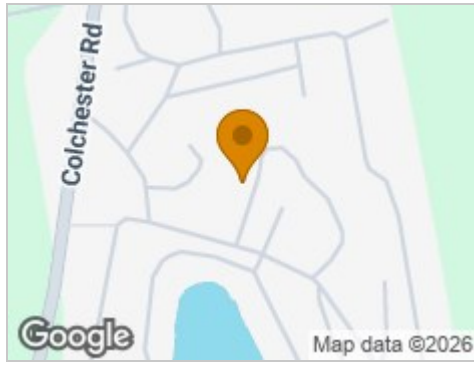
### Terrace

A large wrap around seating area with views across the lake.

### Parking



Road Map



Hybrid Map



Terrain Map



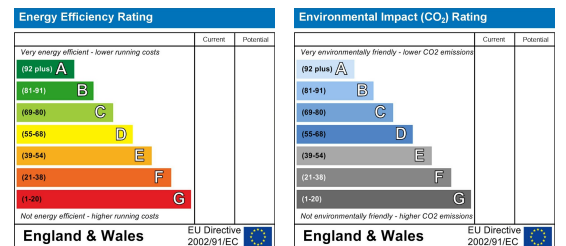
Floor Plan



Viewing

Please contact our Chelmsford Office on 01245 330764 if you wish to arrange a viewing appointment for this property or require further information.

Energy Efficiency Graph



These particulars, whilst believed to be accurate are set out as a general outline only for guidance and do not constitute any part of an offer or contract. Intending purchasers should not rely on them as statements of representation of fact, but must satisfy themselves by inspection or otherwise as to their accuracy. No person in this firm's employment has the authority to make or give any representation or warranty in respect of the property.