

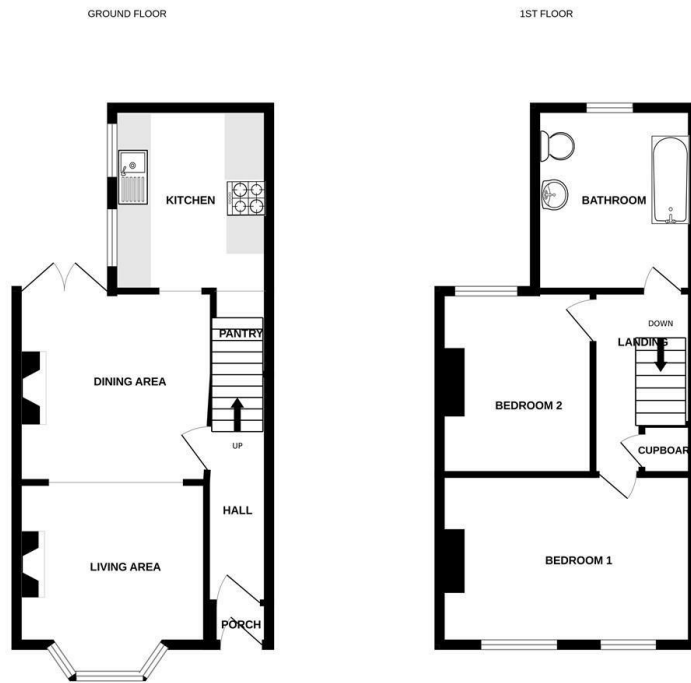
KEYSTONE



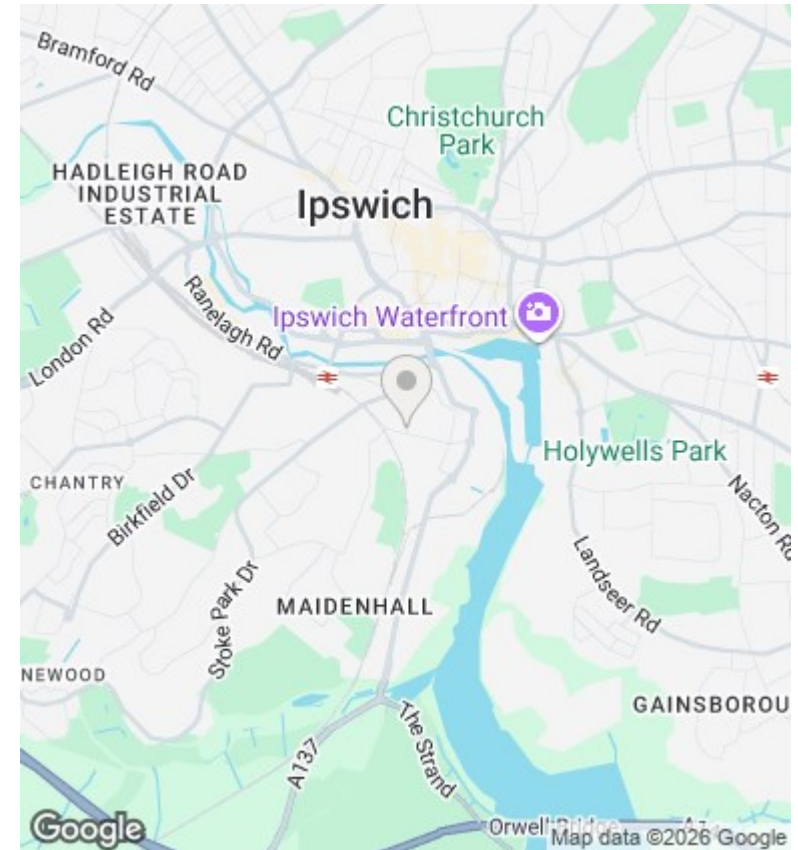
Rectory Road, Ipswich, IP2 8EQ

Offers In Excess Of £180,000

- Period Terraced House
- Kitchen
- Close To Town & Station
- Two Double Bedrooms
- First Floor Bathroom
- Popular Location
- Lounge/Diner
- Garden
- No Onward Chain



Whilst every attempt has been made to ensure the accuracy of the floorplan contained herein, measurements of doors, windows, rooms and any other items are approximate and no responsibility is taken for any error, omission or mis-statement. This plan is for guidance purposes only and should be used as such by any prospective purchaser. The services, systems and appliances shown have not been tested and no guarantee as to their operability or efficiency can be given. Made with Metropix (2025)



Directions

Viewings

Viewings by arrangement only. Call 01473 221 399 to make an appointment.

EPC Rating:

C

