



Stephenson Close, Yaxley Peterborough  
Offers in Excess of **£450,000** **Freehold**

**Sharman  
Quinney**

# Key Features



- Spacious Detached Family Home
- Five Bedrooms
- En- Suite Shower Room
- Three reception Rooms
- Kitchen/Breakfast Room

Located in a quiet Cul-de-Sac within a popular area of Yaxley which is close to local schools and shops, this perfect Detached Family Home briefly comprises of, Reception Hall with stairs to the first floor landing and doors giving access to the Two Piece Downstairs Cloakroom, Study or play room, lounge with a bay window to the front, double doors to the Dining Room with double glazed sliding doors to the rear garden, door to the kitchen/Breakfast Room which has a range of base and eye level units, cupboards and drawers, worktop space, one and a quarter sink unit, built-in gas hob, electric oven, space for a fridge/freezer, plumbing for a dishwasher, door to the Utility Room with worktop space, single drainer sink unit, plumbing for a washing machine and door to the rear garden, Upstairs Gallery Landing has doors to Five Bedrooms, Three Piece En-Suite



Shower Room and to Three Piece Family Bathroom, Outside to the front driveway providing Off Road Parking and leads to the Double Garage with light and power connected, two metal up and over doors and a courtesy door to the Rear Garden which is laid mainly to lawn with a paved patio seating area.

Reception Hall:

Downstairs Cloakroom - 5'7" x 2'8"

Study - 9'8"max x 7'4"max

Lounge - 15'3"max x 12'3"max (excluding bay window)

Dining Room - 10'7" x 9'7"

Kitchen/Breakfast Room

Utility Room- 8' x 5'2"

First Floor Gallery Landing:

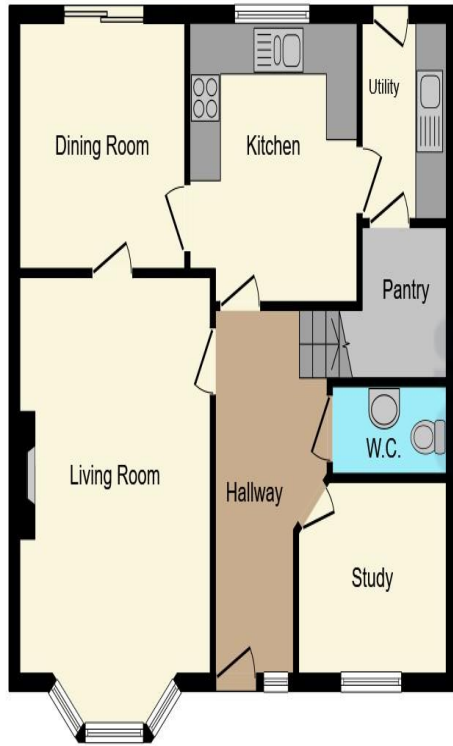
Bedroom 1 - 14' x 10'8"

En-Suite Shower Room - 6'1" x 5'3" (excluding shower cubicle)

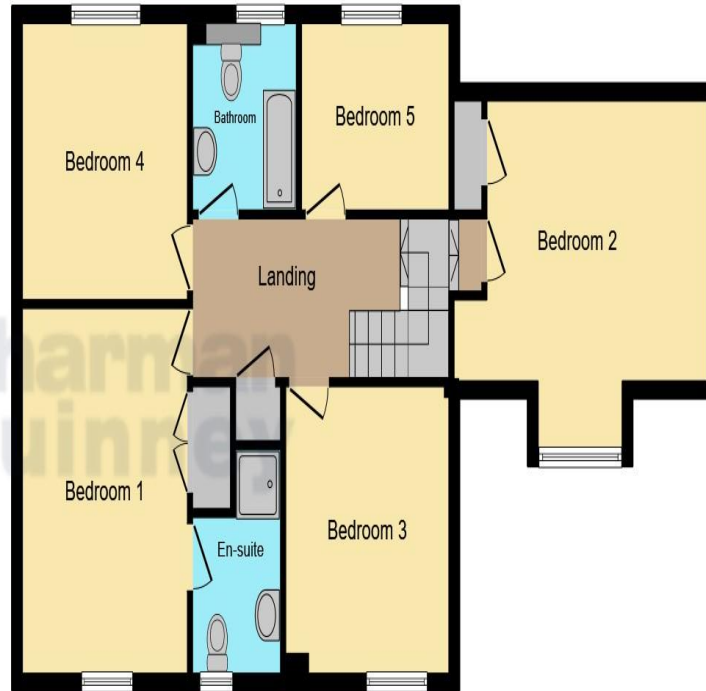
Bedroom 2 - 11'9"max x 11'1"max

Bedroom 3 - 11' x 11'





**Ground Floor**



**First Floor**

Bedroom 4 - 10' x 8'

Bedroom 5 - 14' x 11' 9 (excluding dormer window)

Family Bathroom - 8' max x 7' max

Double Garage - 19' 3" max x 17' max

This floor plan is for illustrative purposes only. It is not drawn to scale. Any measurements, floor areas (including any total floor area), openings and orientation are approximate. No details are guaranteed, they cannot be relied upon for any purpose and they do not form part of any agreement. No liability is taken for any error, omission or misstatement. A party must rely upon its own inspection(s). Powered by [www.focalagent.com](http://www.focalagent.com)

To view this property call Sharman Quinney on:  
**01733 245400**

# Selling your property?

Contact us to arrange a **FREE** home valuation.

 01733 245400

 Unit 19 Maltings Square, Broadway Shopping Centre, Yaxley, Cambridgeshire, PE7 3EW

 yaxley@sharmanquinney.co.uk

 [www.sharmanquinney.co.uk](http://www.sharmanquinney.co.uk)



 SCAN ME



Sharman Quinney Holdings Limited is registered in England and Wales under company number 4174227, Registered Office is Cumbria House, 16-20 Hockliffe Street, Leighton Buzzard, Bedfordshire, LU7 1GN. VAT Registration Number is 500 2481 05.

1: These particulars do not constitute part or all of an offer or contract. 2: The measurements indicated are supplied for guidance only and as such must be considered incorrect. 3: Potential buyers are advised to recheck the measurements before committing to any expense. 4: Sharman Quinney has not tested any apparatus, equipment, fixtures, fittings or services and it is the buyers interests to check the working condition of any appliances. 5: Sharman Quinney has not sought to verify the legal title of the property and buyers must obtain verification from their legal representative. 6: Intending purchasers will be asked to produce identification documentation at a later stage and we would ask your co-operation in order that there will be no delay in agreeing the sale. Ref: YAX203739 - 0007

