

Room 10, Listowel House 15 Linden Road, Clevedon, BS21 7SL

£715 Per Calendar Month

marktempler

RESIDENTIAL LETTINGS





PROPERTY TYPE

Room within a house share



LOCATION

Mid Clevedon



BEDROOMS

0



RECEPTION ROOMS

0



BATHROOMS

0



WARMTH

Gas central heating



PARKING

On street parking



OUTSIDE SPACE

Communal front garden



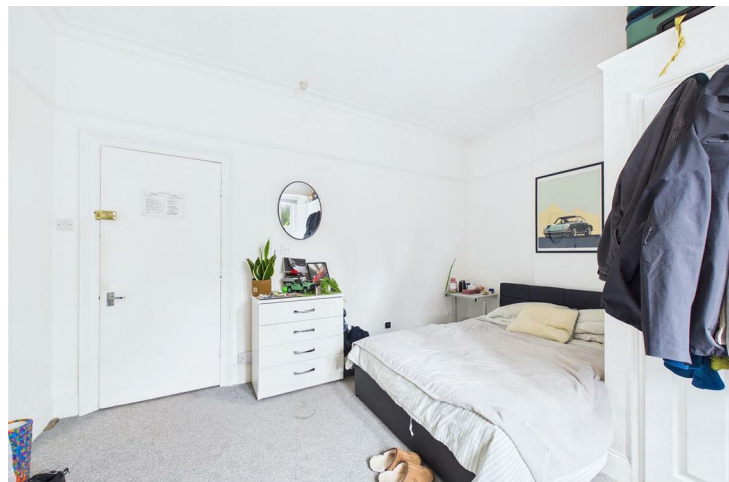
EPC RATING

C



COUNCIL TAX BAND

Included



Part furnished room within this shared house  
Double sized bedroom situated on the first  
floor

Holding deposit - £165.00

Security deposit - £825.00

Council Tax Rating - Included

## What will it cost to rent this property?

When you submit a completed application form, we will discuss the details with the Landlord. If the Landlord is happy to proceed you will be required to pay:

1. Holding deposit, equivalent to 1 week's rent. This will reserve the property.

Once references are complete, you will be asked to pay:

2. First month's rent

3. Security deposit, equivalent to 5 weeks' rent (for rents under £50,000 per year). This covers damages or defaults on the part of the tenant during the tenancy.



Shared facilities include kitchen with us of appliances and bathroom  
The rent includes the gas, electric, water and council tax bills

Shared front garden and side patio area  
Easy walking distance to Hill Road shops  
On street parking

Available From:

This property is available to move into from approximately 30th June 2026



### Utilities

Mains water and drainage, mains electric supply, gas central heating. This information has been provided by the Landlord and is correct to the best of our knowledge.

### Broadband

Ultrafast broadband available with highest available download speed 1800 Mbps and highest available upload speed 220 Mbps. This information is sourced via checker.ofcom.org.uk, we advise you make your own enquires.

### Mobile phone signal/coverage

There is limited to likely coverage indoors depending on the provider and likely coverage outdoors with a range of providers. This information is sourced via checker.ofcom.org.uk, we advise you make your own enquires.

For the latest properties and local news follow Mark Tempier Residential Lettings on:



