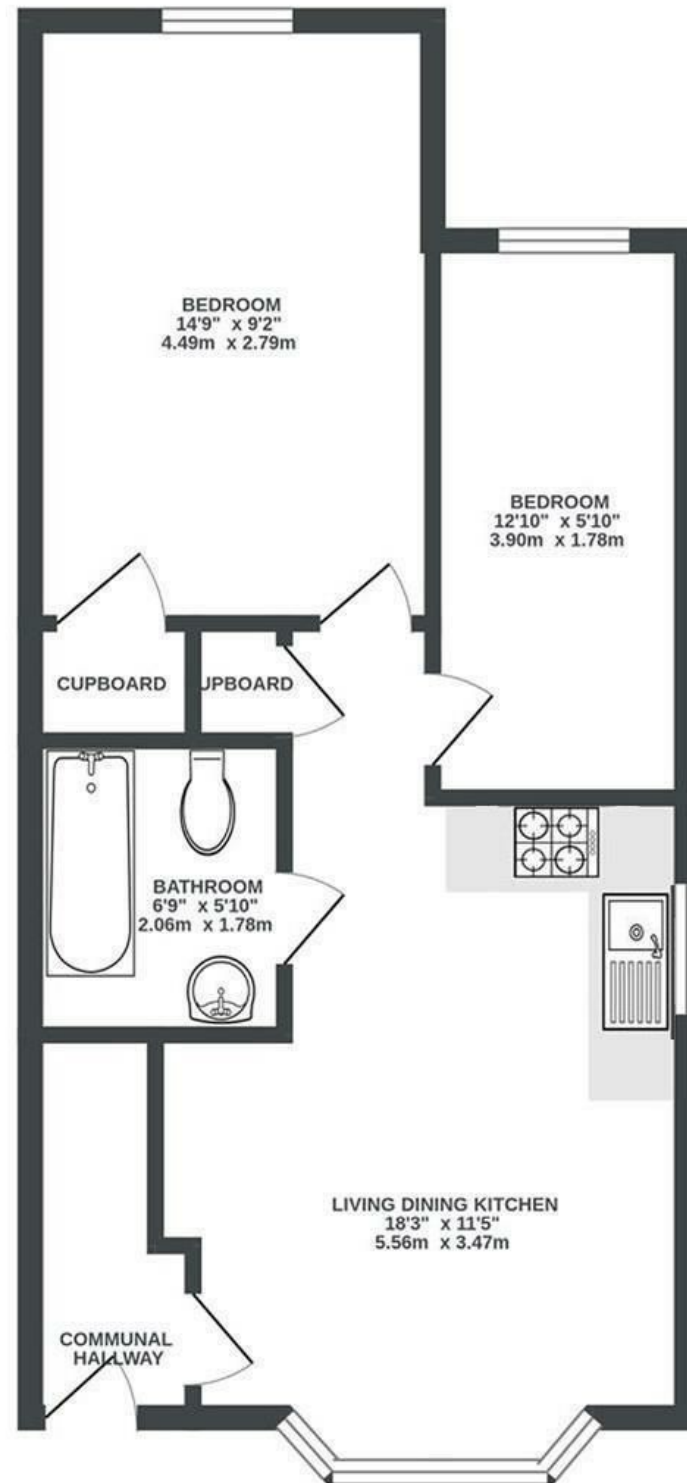


Trinity Court

HORFIELD

APPROXIMATE FLOOR AREA
42.9 SQM / 462 SQFT



Boardwalk

Maple Road , BRISTOL

£

£230,000

zZz

2 Bedrooms



BS7 8RL



1 Bathrooms

"This has been an ideal first home for us and we have loved living here for the last 8 years, gradually making it our own. We enjoy warm, rich colours and the flat attracts beautiful natural light through the front bay window. Situated on a quiet and popular road, we're a stone's throw from Horfield Common and Gloucester Road. We didn't know much about the area on moving here but feel we really landed on our feet and have felt very lucky to live here."

