



Flat 33 Sky Apartments Homerton Road, London, E9 5FA

£330,000

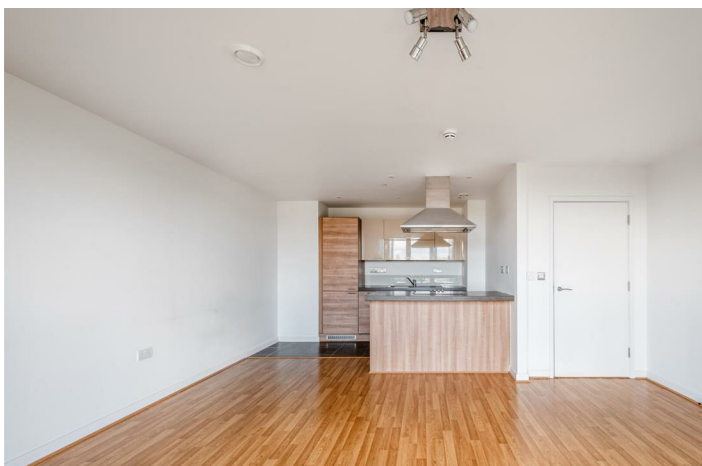
# Flat 33 Sky Apartments Homerton Road, London E9

5FA

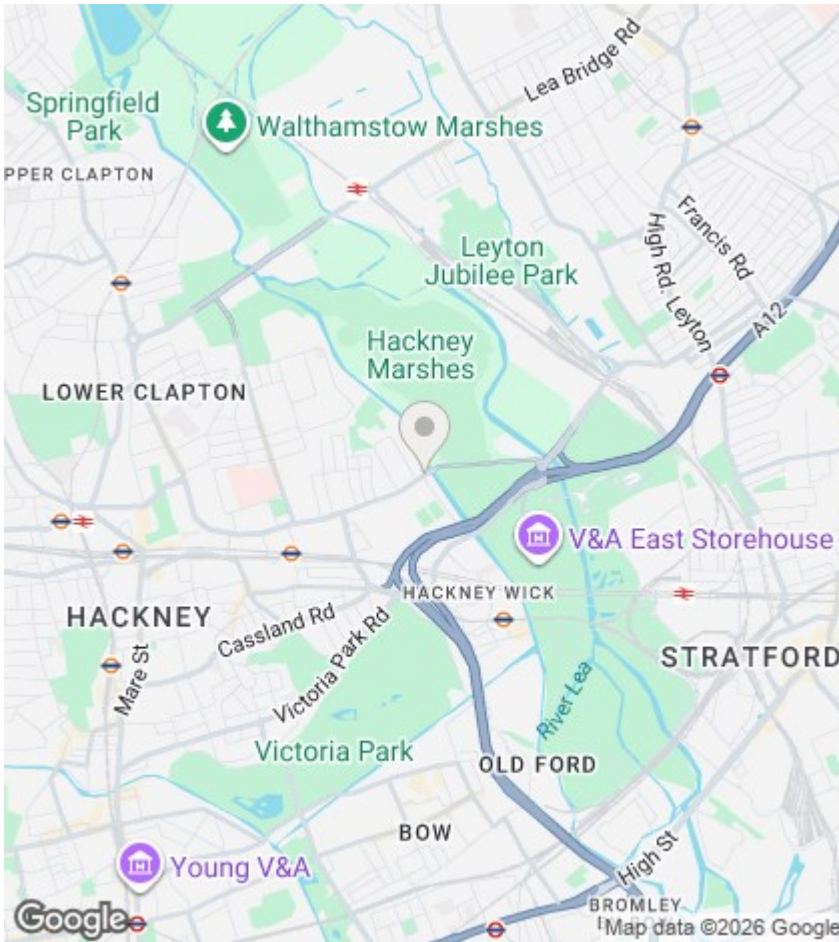
Blakestanley have the pleasure of offering this sixth floor one bedroom flat in good condition, with canal views and balcony, enjoying a southeast orientation. Alongside this the development provides a 24-hour concierge, on-site gym and communal roof terrace. On the doorstep is Hackney Marshes and Regent's Canal, putting all Hackney Wick and the Olympic Park have to offer within easy reach, including the V&A Storehouse, Westfield and numerous bars and restaurants. Homerton Overground Station and many bus routes put the rest of London and beyond within easy reach.



Council Tax Band: C







Directions

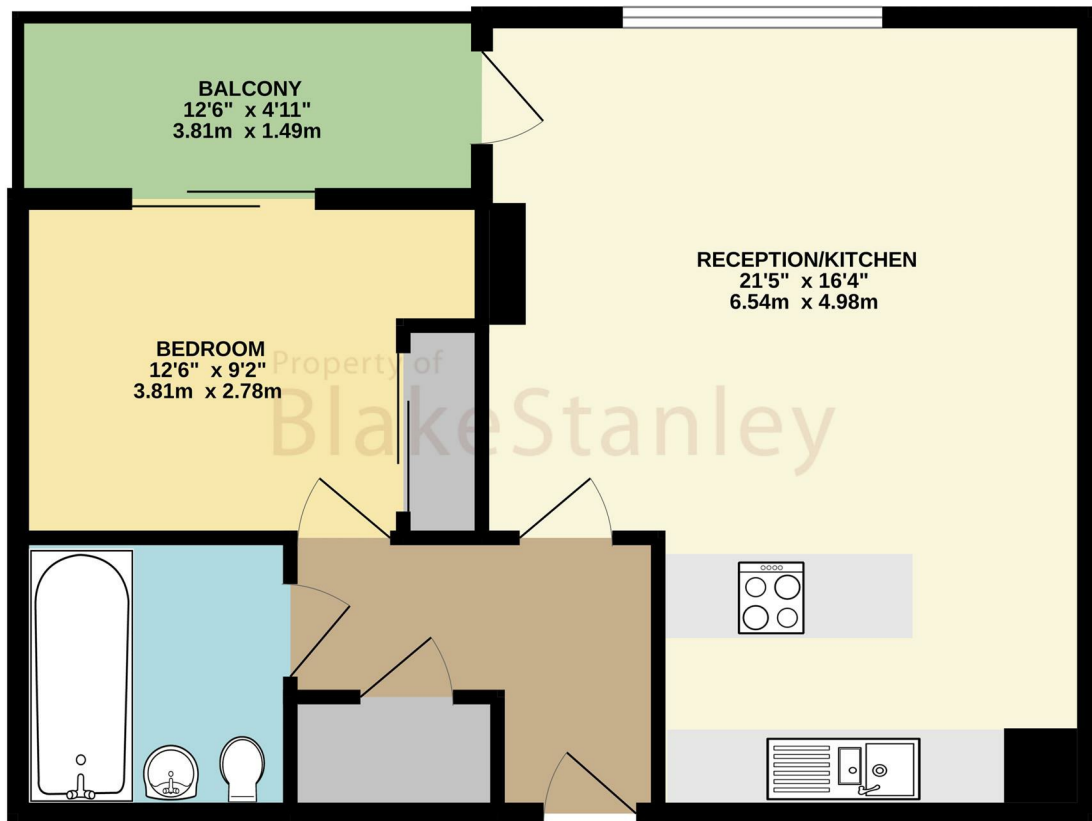
Viewings

Viewings by arrangement only. Call 020 7254 7554 to make an appointment.

EPC Rating:

Energy Efficiency Rating		Current	Potential
Very energy efficient - lower running costs			
(92 plus) <b>A</b>			
(81-91) <b>B</b>			
(69-80) <b>C</b>			
(55-68) <b>D</b>			
(39-54) <b>E</b>			
(21-38) <b>F</b>			
(1-20) <b>G</b>			
Not energy efficient - higher running costs			
<b>England &amp; Wales</b>		EU Directive 2002/91/EC	

550 sq.ft. (51.1 sq.m.) approx.



TOTAL FLOOR AREA - 550 sq ft (51.1 sq m) approx