

PHILLIPS & STUBBS



coastal +
COUNTRY



Turners is situated on a quiet road in the Conservation Area of the Ancient Town of Winchelsea, one of the few examples of a bastide town in England based on the grid-iron street plan with wide, regular streets arranged around a giant square and the church of St. Thomas the Martyr. Local facilities include a shop, together with a primary school and public house. Winchelsea has a railway station nearby (.75 mile) from where there are train services to Eastbourne and to Ashford with high speed connections to London St Pancras (journey time 37 minutes). For more comprehensive facilities there is the Cinque Port of Rye within 3 miles which has a good range of independent shops, restaurants and Kino cinema.

Entrance hall, Vaulted living/dining room, Kitchen/breakfast room, Utility, Bedroom 1 with en suite bathroom, Vaulted bedroom 2, Family shower room, Gas heating, Double glazing, EPC rating C, Front terrace with large gardens opposite the property.

Forming an attached single storey period property presenting appealing weatherboard clad elevations set on ragstone foundations with double glazed timber casement windows beneath a pitched tiled roof.

A panelled front door opens into an entrance hall with a built in double storage cupboard, exposed ceiling beams, quarry tiled flooring and an open doorway to an inner hallway which has built in bookshelves and two windows to the side with shutters.

The living/dining room has a vaulted ceiling, whitewashed floorboards and a projecting square bay window with full height casement windows providing far reaching widespread rural views over farmland with the silhouette of Rye in the distance. From this space there is a shallow step up and wide opening into Kitchen/breakfast room fitted with an extensive

bespoke range of cabinets incorporating cupboards and drawers, electric hob with extractor over. Integrated dishwasher and full height fridge/freezer. Whitewashed floorboards and skylight providing natural light. Bedroom 1 has full width windows taking advantage of the reaching views. En suite includes a roll top bath in the bedroom and door to a w.c and wash hand basin. Bedroom 2 has a vaulted ceiling and full width windows with views, additional windows to the front with shutters. Family shower room comprising large walk in shower, twin wash hand basins on stand with drawer under, w.c, towel rail and tiled flooring.

Outside

To one side of the property is a paved terrace from where there are elevated views. The principal area of garden 50' x 33' approx. is located on the opposite side of North Street to the house. An established cottage garden, from where there are far reaching widespread rural views, set down to lawn with mixed flower beds, herbaceous borders, paved terrace with pergola and garden shed. Beyond the garden there is an extensive area of orchard and woodland running steeply down to the base of the cliff and behind the adjoining gardens to the Pipewell Gate.

Further information

Local Authority: Rother District Council. Council Tax Band E
Mains electricity and water. Mains drainage.

Predicted mobile phone coverage: EE, Vodafone, Three and 02

Broadband speed: Ultrafast 80Mbps available. Source Ofcom

River and Sea Flood Risk summary: Very low risk. Source GOV.UK

Guide Price £640,000 Freehold

Turners School Hill, Winchelsea, East Sussex, TN36 4HL



A unique attached single storey cottage occupying an elevated position in the Conservation Area of the Ancient Town with widespread, far reaching views across open countryside in the Brede Valley to the silhouette of Rye Citadel in the distance.

- Entrance hall
- Vaulted living/dining room
- Kitchen/breakfast room
- Utility
- Bedroom with en suite bathroom
- Vaulted bedroom 2
- Family shower room
- Gas heating
- Double glazing
- Front terrace with large gardens opposite the property



Directions:

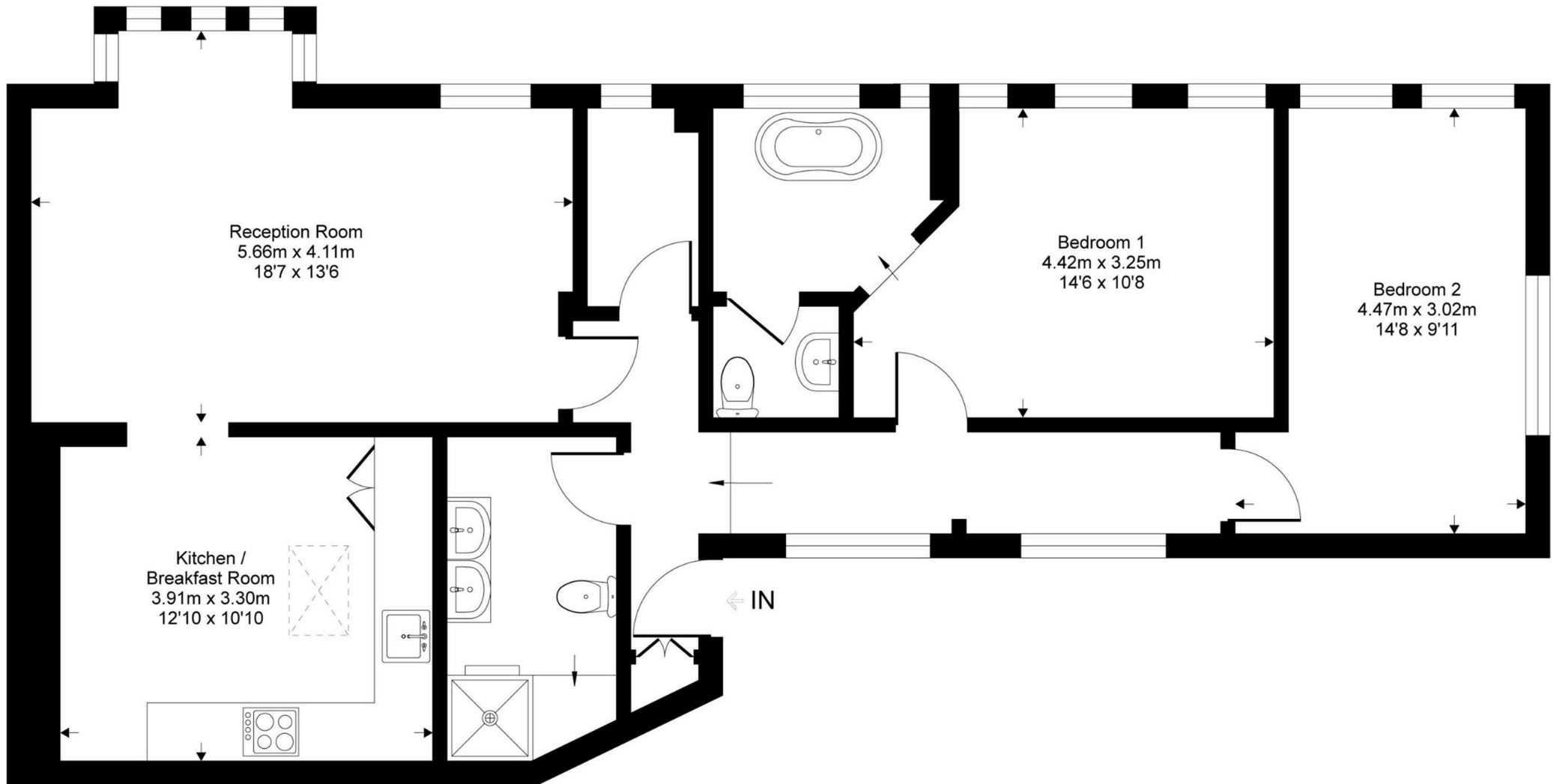
EPC: C

Local Authority: Rother District Council

Council Tax Band: E

Turners

Approximate Gross Internal Area = 88 sq m / 942 sq ft



Ground Floor

This floor plan is for representation purposes only as defined by the RICS code of Measuring Practice (and IPMS where requested) and should be used as such by any prospective purchaser. Whilst every attempt has been made to ensure the accuracy contained here, the measurement of doors, windows and rooms is approximate and no responsibility is taken for any error, omission or mis-statement. Specifically no guarantee is given on the total area of the property if quoted on the plan. Any figure provided is for guidance only and should not be used for valuation purposes.

PHILLIPS & STUBBS

Viewing Arrangements : Strictly by appointment with Phillips & Stubbs

Important Notice:

Phillips & Stubbs, their clients and any joint agents give notice that:

1. They are not authorised to make or give any representations or warranties in relation to the property either here or elsewhere, either on our own behalf or on behalf of their clients or otherwise. They assume no responsibility for any statement that may be made in these particulars. These particulars do not form part of any offer or contract and must not be relied upon as statements or representations of fact.
2. These particulars have been provided in good faith and, whilst we endeavour to make them accurate and reliable, if there are any points of particular importance to you please contact our office and we will make further enquiries on your behalf. Any areas, measurements or distances are approximate. The text, photographs and plans are for guidance only and are not necessarily comprehensive. It should not be assumed that the property has all necessary planning, building regulation or other consents regarding alterations. Phillips and Stubbs have not tested any services, equipment or facilities. Purchasers must satisfy themselves by inspection or otherwise. All contents, fixtures, fittings and electrical appliances are expressly excluded from the sale unless specifically mentioned in the text of the sales particulars. A wide angle lens has been used in the photography.



47-49 Cinque Ports Street, Rye, East Sussex TN31 7AN 01797 227338 rye@phillipsandstubbs.co.uk
Mayfair Office, 41-43 Maddox Street, London W1S 2PD 0207 467 5330 mayfair@phillipsandstubbs.co.uk

www.phillipsandstubbs.co.uk