

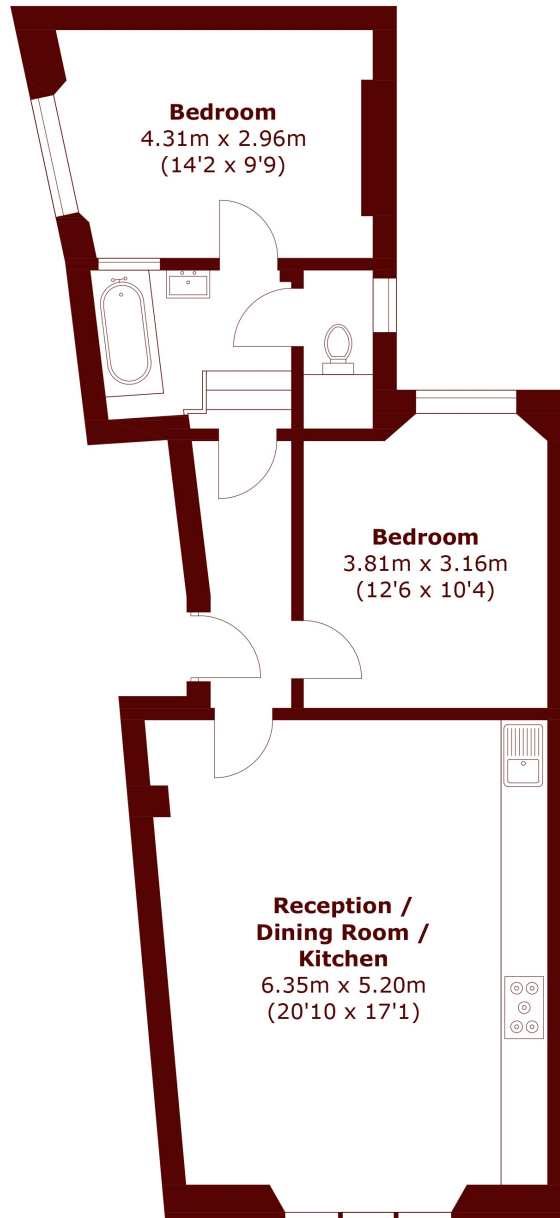


Kensington Gardens Square, W2

£795 per week (£3,445 pcm)



- Spacious
- Two bedrooms
- High ceilings
- Period Features
- Open Plan Kitchen
- Communal garden access



Total area (approx.): 66.9 sq. m (720.1 sq. ft)

Marsh & Parsons Notting Hill

2-6 Kensington Park Road,
London, W11 3BU
020 7313 2890