



WILLESDEN LANE, NW6

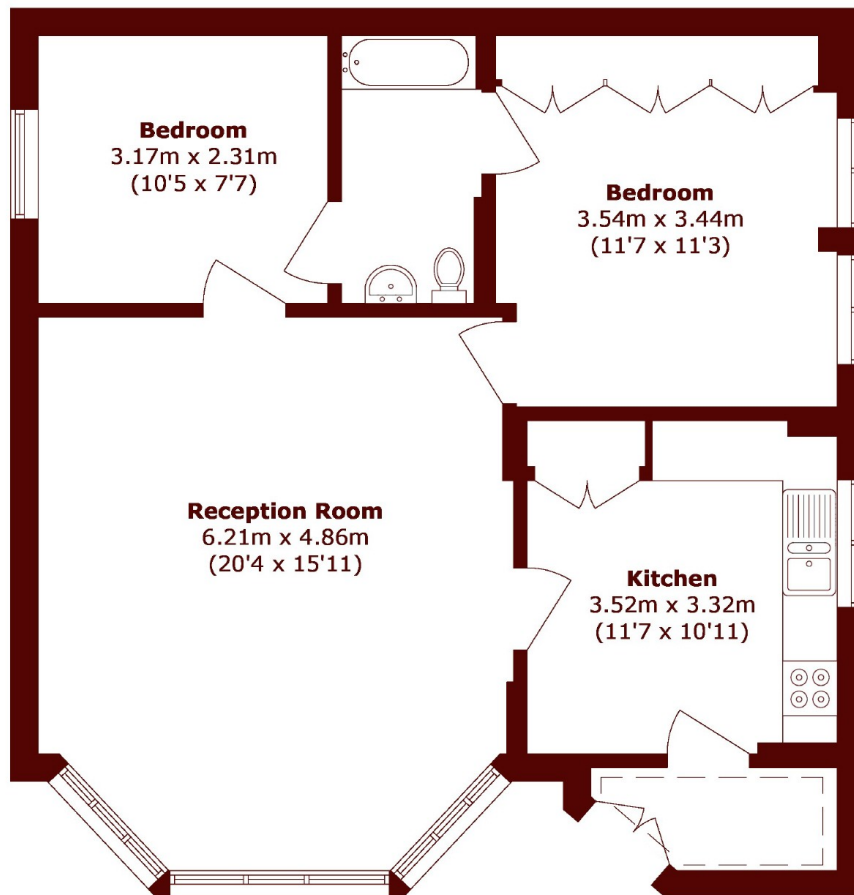
£550,000

This bright and spacious, two bedroom garden flat arranged over 823 square feet is situated on a quiet residential street in Brondesbury Park close to Queen's Park. Comprising a modern kitchen, sleek three-piece

Share Of Freehold
Private Entrance
West Facing Garden

Great Condition
Two Bedrooms
Characterful Wooden Flooring

STEP INSIDE WILLESDEN LANE



Total area (approx.): 76.5 sq. m (823.4 sq. ft)

Willesden Green
020 8451 0420

Energy Rating: C We aim to make our particulars both accurate and reliable. However, they are not guaranteed; nor do they form part of an offer or contract. If you require clarification on any points then please contact us, especially if you're traveling some distance to view. Please note that appliances and heating systems have not been tested and therefore no warranties can be given as to their good working order

MARSH &
PARSONS