

The Colonnade

Maidenhead • Berkshire • SL6 1DL

Guide Price: £420,000



coopers
est 1986

The Colonnade

Maidenhead • Berkshire • SL6 1DL

A well-presented first floor apartment offering approximately 651 sq ft of well-planned accommodation, featuring a spacious open-plan kitchen/living/dining room, a larger-than-average principal bedroom with built-in storage and en-suite, a further bedroom with storage, and a contemporary family bathroom. The living area and principal bedroom both enjoy direct access to an impressive wrap-around balcony, providing an ideal space for outdoor seating and entertaining while taking in attractive canal views. Externally, the property forms part of a modern, well-maintained apartment building and further benefits from allocated underground parking for one vehicle. Ideally located within easy reach of local shops, amenities and transport links, the apartment is well suited to commuters and those seeking access to nearby town centres, green spaces and everyday conveniences.

Desirable Complex

Canal Views

Wraparound Balcony

Modern Interiors

Secure Underground Parking

Two Double Bedrooms

Spacious Open Plan Living

Long Lease

Town Centre Location

Walking Distance To Elizabeth Line

These particulars are intended as a guide and must not be relied upon as statements of fact. Your attention is drawn to the Important Notice on the last page.

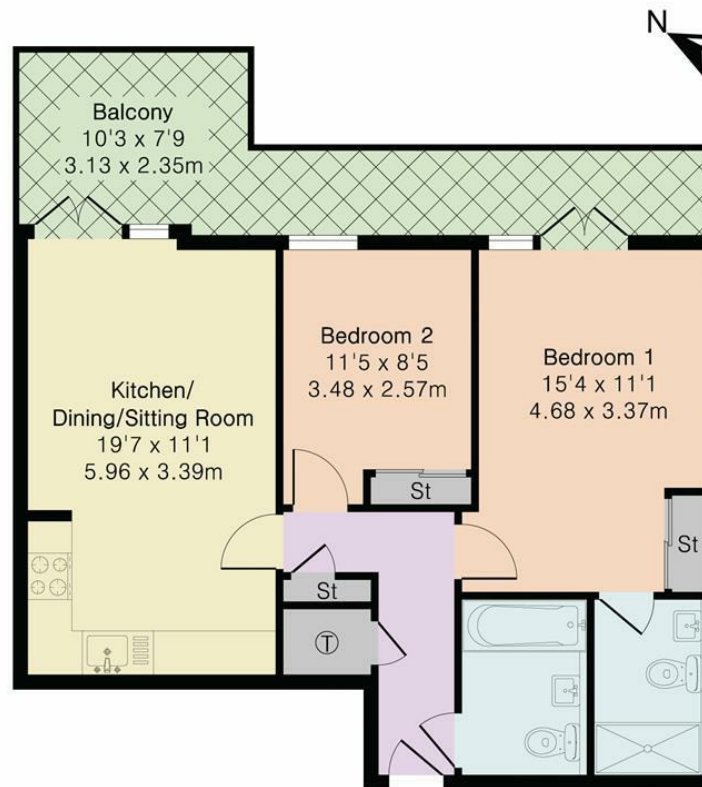




Waterside Court, The Colonnade, Maidenhead, SL6

Approximate Area = 651 sq ft / 60.5 sq m

For Identification only - Not to scale



Floor plan produced in accordance with RICS Property Measurement 2nd Edition. Although Pink Plan Ltd ensures the highest level of accuracy, measurements of doors, windows and rooms are approximate and no responsibility is taken for error, omission or misstatement. These plans are for representation purposes only and no guarantee is given on the total square footage of the property within this plan. The figure icon is for initial guidance only and should not be relied on as a basis of valuation.

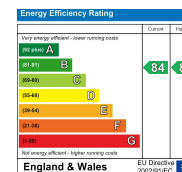


coopers
est 1986

**42 Queen Street, Maidenhead,
SL6 1HZ**

maidenhead@coopersresidential.co.uk

CoopersResidential.co.uk



Important Notice: These particulars, whilst believed to be accurate are set out as a general outline only for guidance and do not constitute any part of an offer or contract. Intending purchasers should not rely on them as statements or representation of fact, but must satisfy themselves by inspection or otherwise has the authority to make or give any representation or warranty in respect of the property.