



Gainsborough Road, TW9

£775,000

A rare opportunity to purchase this two bedroom garden property occupying the entirety of the ground floor of a converted house. The property benefits from a share of the freehold, no onward chain, and the addition of off street parking.

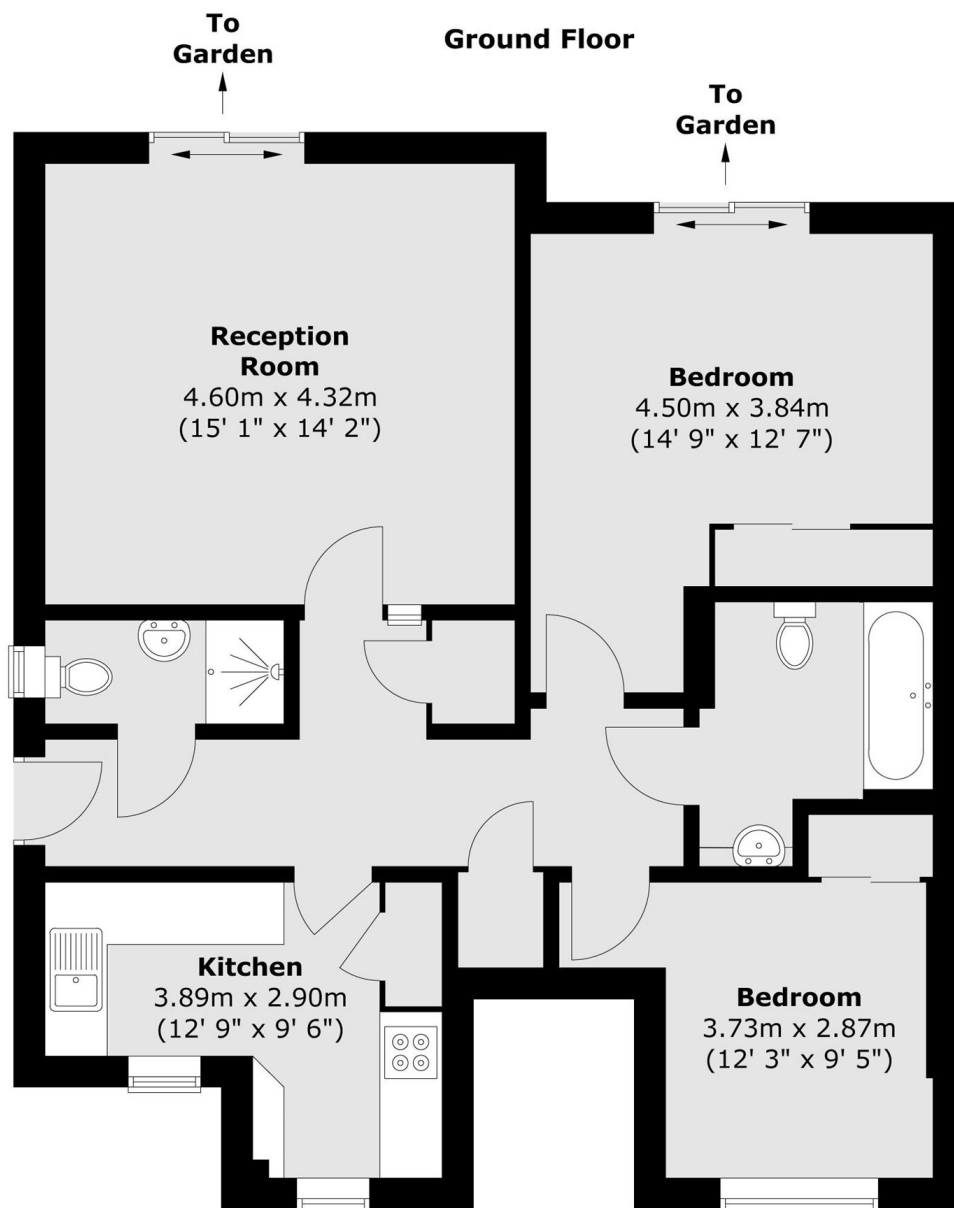
The property is entered via it's own front door to the side of the building which leads into the long hallway. The accommodation comprises two double bedrooms with built in wardrobes, two modern bathrooms, a separate modern kitchen and large reception room with sliding doors leading out to the south facing private rear garden.

Gainsborough Road is ideally located for the Royal Botanic Gardens Kew, the Thames Path, and Kew Village. The commuter is equally well catered for with Kew Gardens station close to hand, offering the district line and overground, as well as excellent bus services to Central London.

Features

- Two Bedrooms
- Two Bathrooms
- South Facing Garden
- Off Street Parking
- Share of Freehold
- No Onward Chain

Gainsborough Road, Kew, TW9



Total area (approx.) : 77.3 sq. m (832 sq. ft)