

Hodder Close, Bamber Bridge, Preston, PR5 6WA

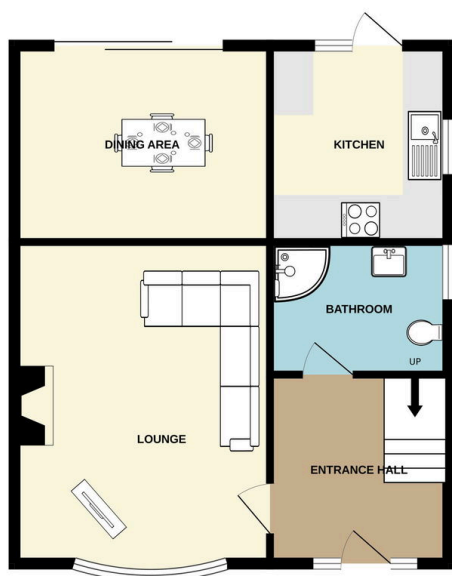
£165,000

🛏 3 🚿 1 🚺 2



- Quiet cul-de-sac location
- Modern bathroom
- Close to local shops, schools and amenities
- Viewing highly recommended
-
- Three bedrooms
- Ideal first time buyer opportunity
- NO CHAIN!!!
-
-

GROUND FLOOR



1ST FLOOR



Whilst every attempt has been made to ensure the accuracy of the floorplan contained here, measurements of doors, windows, rooms and any other items are approximate and no responsibility is taken for any error, omission or mis-statement. This plan is for illustrative purposes only and should be used as such by any prospective purchaser. The services, systems and appliances shown have not been tested and no guarantee as to their operability or efficiency can be given.
Made with Metropex ©2025

Fantastic potential! Situated in a quiet cul-de-sac location in the heart of Bamber Bridge, this three bedroom semi-detached property is an exciting opportunity. Comprising of a spacious lounge, modern bathroom, kitchen and dining room with doors leading to the garden, early viewing is highly recommended of this desirable property. The property is Freehold and offered with NO CHAIN delay. Please quote "JB0397" when calling to arrange a viewing