



SALTRAM CRESCENT, W9

£550,000

Duplex Conversion
One Bedroom
Turnkey Condition
Period features
Open Plan Kitchen and Living Room
Walking Distance of Portobello Road

@marshandparsons
marshandparsons.co.uk

MARSH &
PARSONS

ABOUT THE PROPERTY

A beautifully presented one bedroom duplex apartment set within a converted church. Arranged over the first and second floors of a well maintained conversion, the property blends striking character features, including exposed brickwork and stained glass windows, with a stunning open plan kitchen and living space centred around an impressive kitchen island. Extensively renovated and tastefully decorated throughout, the apartment is offered in turnkey condition.

Ideally situated on Saltram Crescent, the property benefits from excellent access to the shops, cafés, and transport links of Queens Park & Harrow Road, Westbourne Park (Circle, Hammersmith & City lines) and Queen's Park







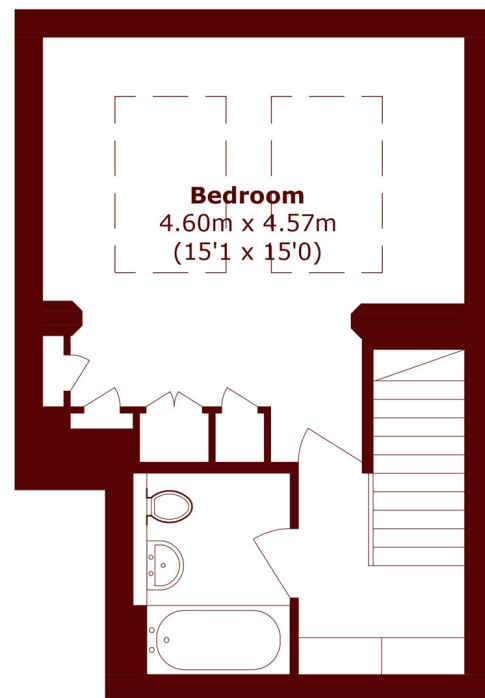
FURTHER DETAILS



STEP INSIDE SALTRAM CRESCENT



First Floor



Second Floor

Total area (approx.): 56.8 sq. m (611.4 sq. ft)

Little Venice
020 7993 3050

Energy Rating: E We aim to make our particulars both accurate and reliable. However, they are not guaranteed; nor do they form part of an offer or contract. If you require clarification on any points then please contact us, especially if you're traveling some distance to view. Please note that appliances and heating systems have not been tested and therefore no warranties can be given as to their good working order

**MARSH &
PARSONS**