



www.jeffreygross.co.uk

CARDIFF

VALE

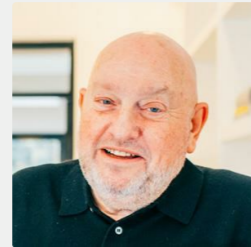
CAERPHELLY

BRISTOL

Victoria Bridge



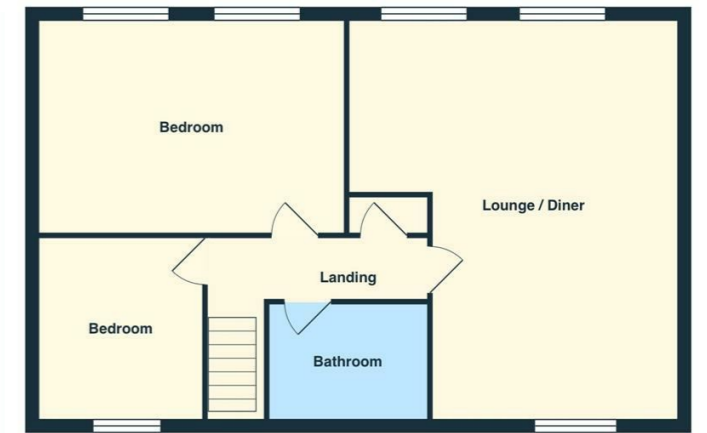
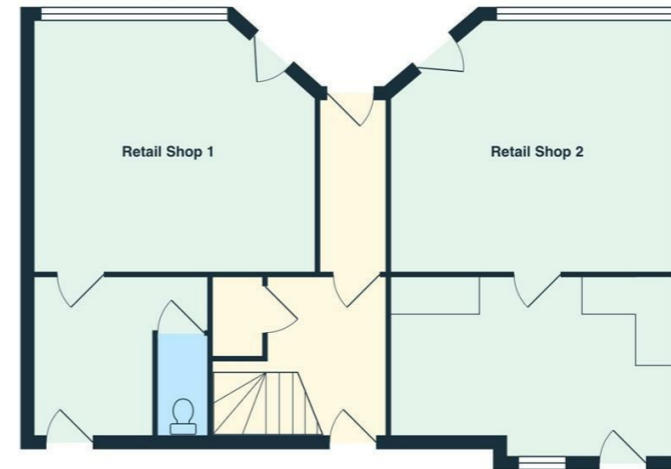
Comments by Mr Jeff Hopkins



Property Specialist
Mr Jeff Hopkins
Valuer

jeff@jeffreycross.co.uk

1-2 Victoria Bridge, Railway Terrace, Penarth, CF64 2AN



Total Area: 136.5 m² ... 1470 ft²
All measurements are approximate and for display purposes only

Comments by the Homeowner





Victoria Bridge

, Penarth, CF64 2AN

£385,000



2 Bedroom(s)



1 Bathroom(s)



1470.00 sq ft



Contact our
Penarth Branch

02920415161

Penarth is an affluent seaside town located approximately 2 miles west of Cardiff City Centre.

This retail / residential investment, which comprises two vacant ground floor shops with a large two bedroom flat with separate access, occupies a prominent position on Victoria Bridge, close to the main retail area of Windsor Road and a short walking distance from Dingle Road Train Station.

1 Victoria Bridge
Comprising 325 sq ft. This unit is vacant and the market rent is circa £6200pa.

2 Victoria Bridge
Currently Vacant, market rent is circa £6200 per annum.

1A Victoria Bridge
Large 2 bedroom flat with rear courtyard fitted to a good specification. Market Rent is circa £14,400 per annum.



EPC Rating(s)

1 Victoria Road- 68C
2 Victoria Road- 59C
1a Victoria Road- 60D

Tenure

We understand the property is Freehold





Energy Efficiency Rating		Current	Potential
Very energy efficient - lower running costs			
(92 plus)	A		
(81-91)	B		
(69-80)	C		73
(55-68)	D	60	
(39-54)	E		
(21-38)	F		
(1-20)	G		
Not energy efficient - higher running costs			
England & Wales		EU Directive 2002/91/EC	

