



Queen Elizabeth Street, SE1

£899,000

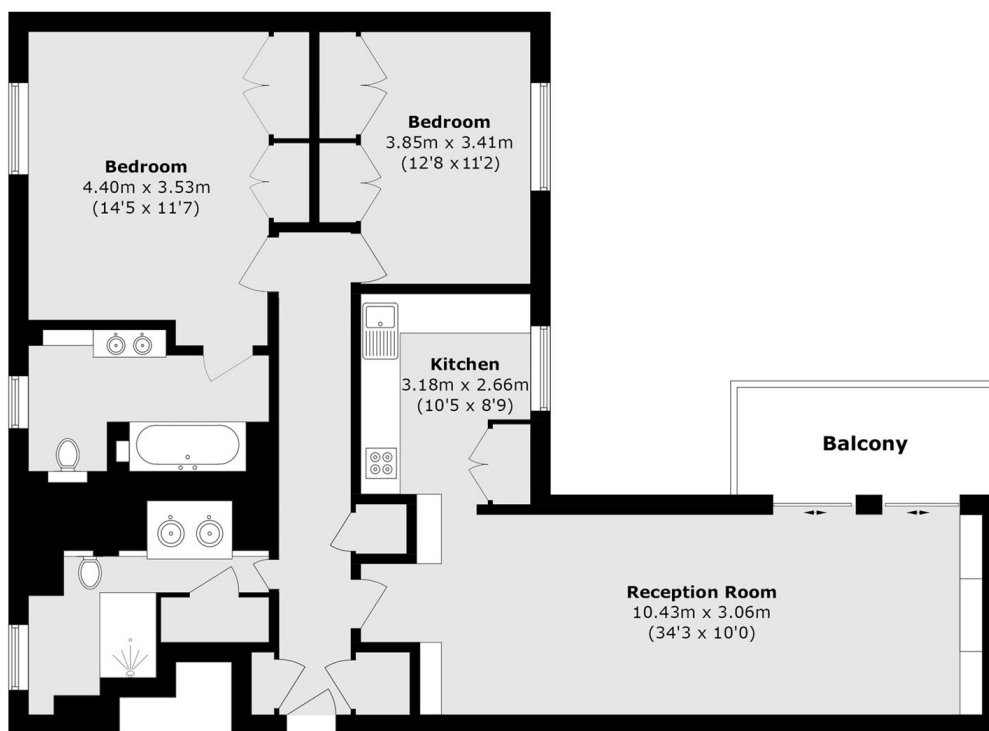
Located moments from the river, this two double bedroom flat is in excellent condition offering a large open plan kitchen living space, two bathrooms, private balcony, ample storage and secure allocated parking space.

Crown Apartments is located only 0.4 miles from London Bridge station and is surrounded by a wide range of shops, restaurants, cafés and artisan delis.

Features

- Two Double Bedrooms
- Two Bathrooms
- Excellent Condition
- Fantastic Location
- Share Of The Freehold
- Secure Allocated Parking

Queen Elizabeth Street, London, SE1



Total Area (approx.): 98.8 sq. m (1063.4 sq. ft)

Balcony area (approx.): 6.4 sq. m (65.0 sq. ft)