



move
Property Sales & Lettings

Princes Road, Cheltenham



Princes Road

Cheltenham

NO ONWARD CHAIN Well-presented 3-bed townhouse in sought-after Tivoli, Montpellier. Spacious, light-filled, with courtyard garden, modern kitchen, parking and close to shops and transport links.

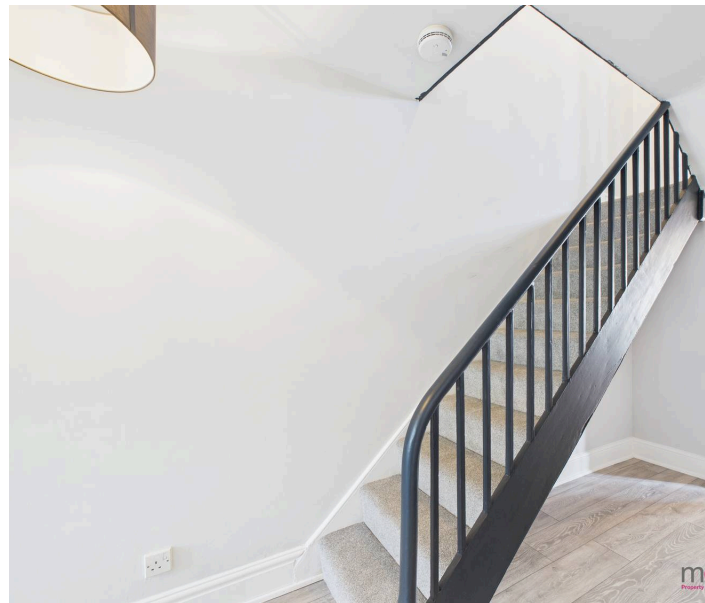
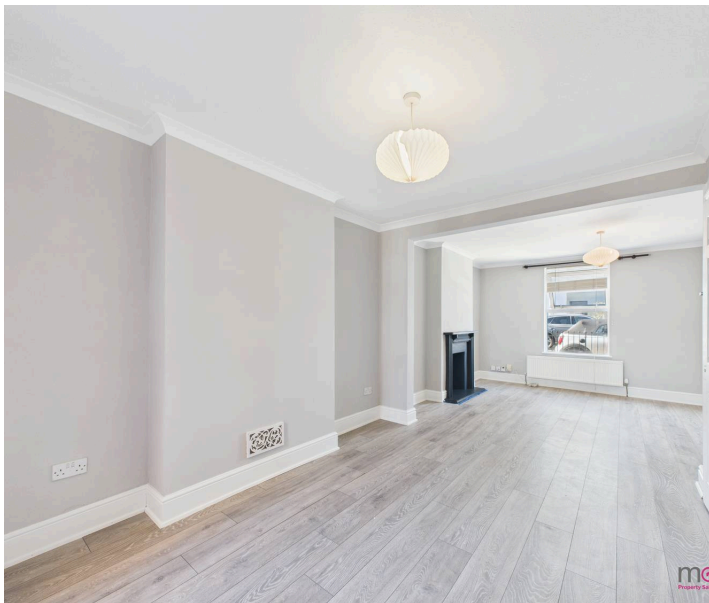
Council Tax band: C

Tenure: Freehold

EPC Energy Efficiency Rating: D

EPC Environmental Impact Rating: D

- Three Bedroom Town House
- NO ONWARD CHAIN
- Located In Sought-After Tivoli
- Spacious Double Reception Room
- Fully Fitted Kitchen
- On Road Parking
- Low Maintenance Garden With Rear Access
- Nearby To Independent Shops, Pubs, Cafés and Restaurants





Approximate total area⁽¹⁾

450 ft²
41.8 m²

(1) Excluding balconies and terraces

Calculations reference the RICS IPMS 3C standard. Measurements are approximate and not to scale. This floor plan is intended for illustration only.

GIRAFFE 360





Move Estate Agents Cheltenham

1 The Clarence Clarence Parade, Cheltenham - GL50 3NY

01242 257333

cheltenham@move.uk.net

move.uk.net/

move
Property Sales & Lettings