

Seabank Road, Wallasey

£137,000 Council Tax Band A EPC Rating D

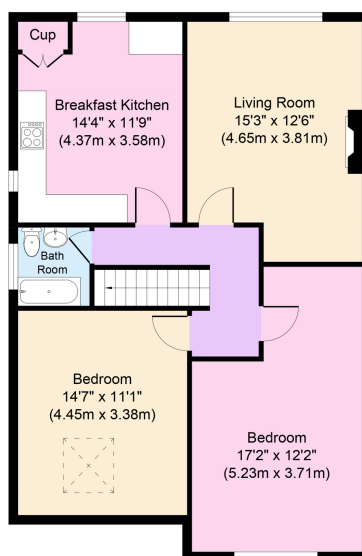
 2  1  1



What a lovely view! This well presented two-bedroom top floor flat boasts some fantastic views over the rooftops and across the water over to the city of Liverpool. Sitting proud so close to the waterfront, you can enjoy strolls along the promenade up to Vale Park and New Brighton, where you will find a great range of services and amenities including Morrisons supermarket, restaurants and cinema. There are also some handy shops just a stone's throw away. Well placed for frequent public transport. Interior: side entrance with stairs leading up to the landing which gives access to the living room, tastefully chosen breakfast kitchen, two bedrooms and a bright and airy bathroom. Complete with uPVC double glazing and gas central heating. This would be perfect for a first-time buyer or someone looking to downsize; be quick to view!

Key Features

- Top Floor Flat
- Fantastic Views
- Excellent Location
- Double Glazing
- Council Tax Band A
- Two Bedrooms
- Well Presented
- Near to the Promenade
- Central Heating
- EPC Rating D



Approximate Floor Area
896 sq. ft
(83.3 sq. m)

Copyright V360 Ltd 2017 | www.houseviz.com