

FREEHOLD



House

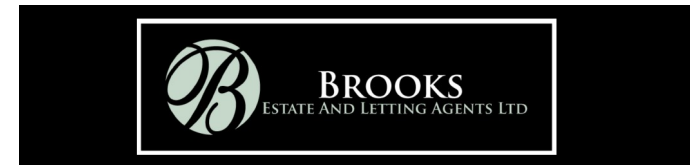
36 WILLIS LANE, WHISTON, PRESCOT, MERSEYSIDE, L35 3RU

Asking Price

£165,000

FEATURES

- A lovely two bedroom garden fronted mid terrace
- Close to excellent schools, Whiston Village and transport links
- Entrance hall, lounge with feature fireplace
- Dining Room and fitted kitchen with french doors
- Family shower room with a modern suite
- Two double bedrooms
- Garden at the rear with patio and artificial lawn
- Driveway at the front for off road parking



2 Bedroom House located in Prescot

Call us on

0151 329 3313

prescot@brooksestateandlettings.co.uk

www.brooksestateandlettings.co.uk

A beautifully presented two-bedroom garden-fronted mid-terrace property, ideally situated close to excellent local schools, Whiston Village and excellent transport links.

This spacious home briefly comprises an inviting entrance hall, a bright and comfortable lounge featuring an attractive fireplace, a separate dining room, and a fitted kitchen with doors opening onto the rear garden.

To the first floor, the property offers two generous double bedrooms and a stylish modern family shower room.

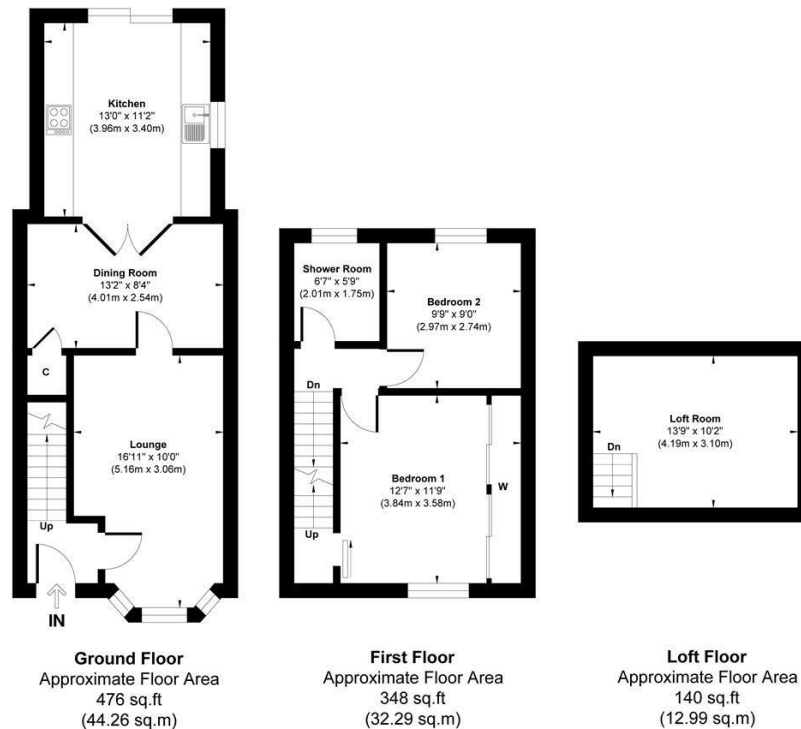
Externally, the rear garden is designed for low-maintenance living, featuring a patio seating area and artificial lawn, perfect for relaxing or entertaining. To the front, there is a block-paved driveway providing off-road parking.

Offered to the market with no onward chain, this excellent property is expected to attract strong interest, and early viewing is highly recommended.

EPC Rating: D

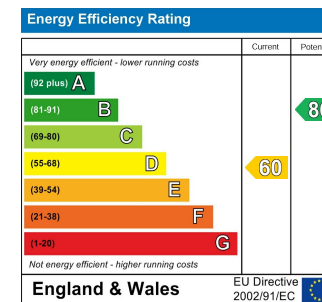
Council Tax Band

A



Approx. Gross Internal Floor Area 964 sq. ft / 89.54 sq. m

Whilst every attempt has been made to ensure the accuracy of the floor plan shown, all measurements, positioning fixtures fittings and any other data shown are an approximate interpretation for illustrative purposes only and are not to scale. No responsibility is taken for any errors, omission, miss-statement or use of data show.



Agents Note: Whilst every care has been taken to prepare these particulars, they are for guidance purposes only. All measurements are approximate and are for general guidance purposes only and whilst every care has been taken to ensure their accuracy, they should not be relied upon and potential buyers are advised to recheck the measurements.

