



Property Features

- Detached 4-bedroom family home
- Spacious living and dining area
- Expansive Conservatory overlooking Garden
- Principal bedroom with en-suite shower room
- Stylish family bathroom and downstairs WC
- Private rear garden ideal for entertaining
- Driveway parking
- Close to schools, shops, cafés, and station
- Near the stunning Chiltern Hills countryside
- EPC 72C / Council Tax Band F

Full Description

Situated in the heart of the highly desirable market town of Princes Risborough, this impressive four-bedroom detached family home offers spacious and versatile accommodation and an exceptional lifestyle opportunity for buyers seeking countryside charm with excellent commuter connections. The property combines generous living space with close access to the high street, making it ideal for growing families, professionals, or those looking to enjoy a balance of town and country living.

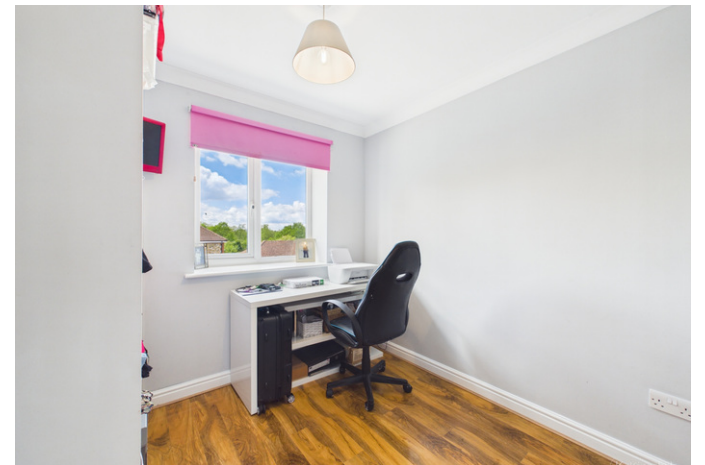
The ground floor features a well proportioned living room and dining room creating a warm and inviting atmosphere perfect for both relaxing evenings and entertaining guests. A separate conservatory provides a multi functional space, while the fitted kitchen offers ample storage, integrated appliances and generous worktop space. There is also the benefit of the garage which is currently set up as a snug/family room, providing additional storage and convenience.

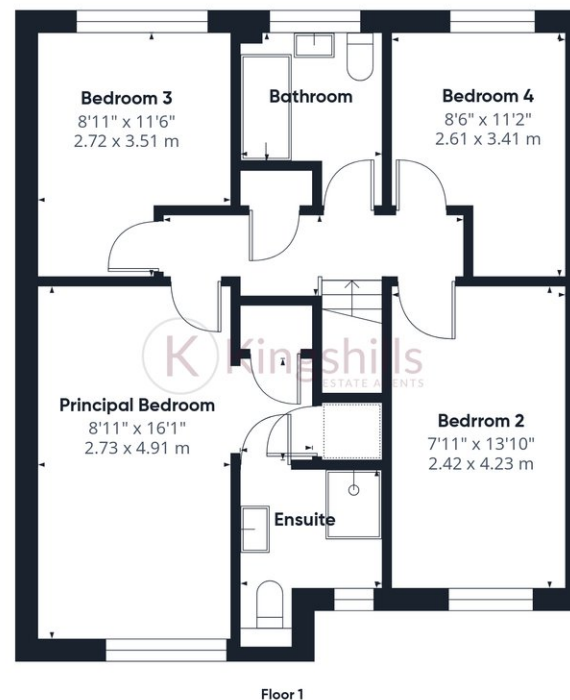
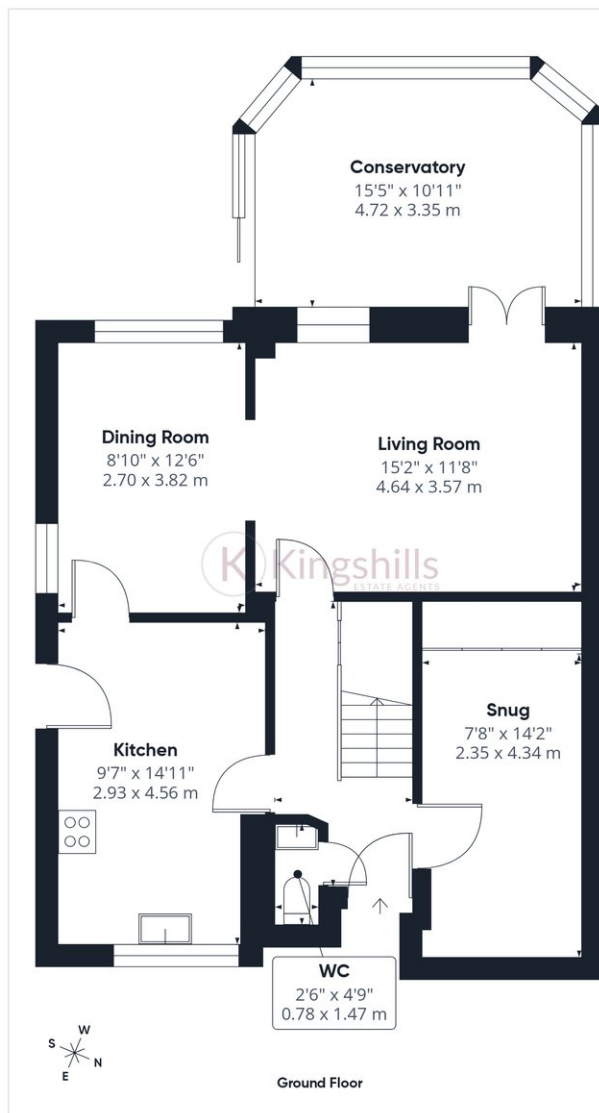
Upstairs, the property offers four well-sized bedrooms, each thoughtfully designed to maximise comfort and practicality. The principal bedroom benefits from fitted wardrobes and access to a modern en-suite shower room, while the remaining bedrooms are ideal for children, guests, or home office use. A stylish family bathroom serves the additional bedrooms and is finished with modern fixtures and fittings. Externally, the detached home enjoys a private rear garden offering a secure and peaceful outdoor space ideal for family activities and summer entertaining. To the front, the property benefits from off-road parking.

One of the key attractions of living in Princes Risborough is the exceptional lifestyle the town and surrounding countryside provide. Nestled at the foot of the beautiful Chiltern Hills, the area is renowned for its scenic landscapes, walking routes, and outdoor leisure opportunities. Residents enjoy immediate access to miles of countryside trails, cycling paths, and panoramic viewpoints across the Chilterns.

The town itself offers a charming mix of independent shops, cafés, pubs, restaurants, and local amenities, creating a strong sense of community while retaining a traditional market-town atmosphere. The weekly market and seasonal local events contribute to the vibrant character of the town, making it popular with both families and professionals relocating from London.







Approximate total area⁽¹⁾
1432 ft²
133.1 m²

(1) Excluding balconies and terraces

Calculations reference the RICS IPMS 3C standard. Measurements are approximate and not to scale. This floor plan is intended for illustration only.

GIRAFFE360