

NEW HOME

# 1 bedroom flat for rent

Smith House, Elmwood Avenue, Feltham, Hounslow

£1,350 pcm

£312 pw ⓘ

## Letting details

Let available  
date: 01/07/2026

Deposit: £1,557 ⓘ

Furnish type: Furnished

Council Tax: Ask agent

PROPERTY TYPE

🏠 Flat

BEDROOMS

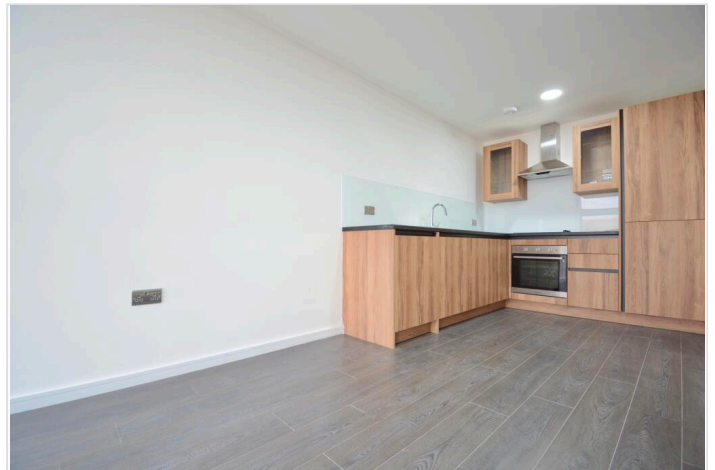
🛏️ 1

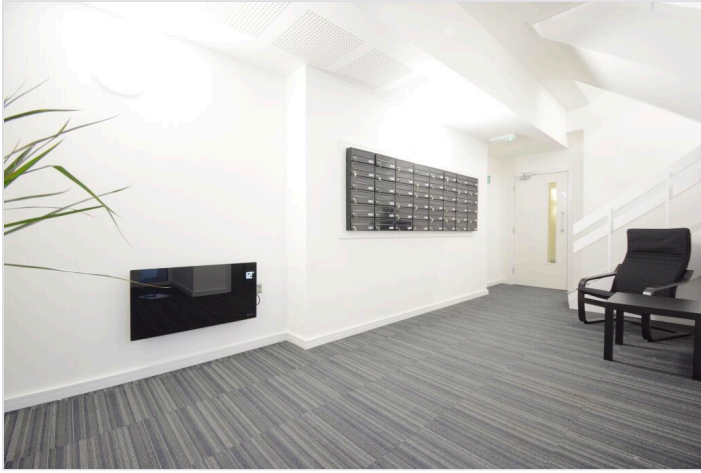
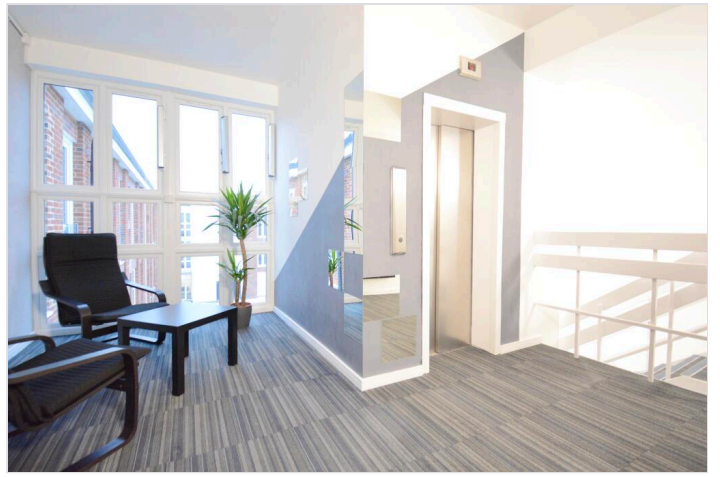
BATHROOMS

🚿 1

SIZE

📏 Ask agent





## Floorplans

### Key features

- Modern Furnished Flat
- 4pc Bathroom Suite
- Floor-to-ceiling Windows Throughout | Juliet Balcony
- On-site Caretaker & 24h Emergency Maintenance Support
- Allocated Parking Bays +£50.00PCM
- Large Double Bedroom
- Open Plan Kitchen | Integrated Appliances (fridge/freezer | cooker/oven | dishwasher | washing machine)
- Video Phone Entry System
- Free Secured Bike Storage
- Video Tour Available on Request

### Description

A selection of modern one bedroom flats situated in Smith House One, Elmwood Avenue TW13. Each flat comprises open-plan kitchen with integrated appliances (fridge/freezer | cooker/oven | dishwasher | washing machine), luxury 4 piece bathroom suite, and Juliet balcony or patio. On-site caretaker Mon-Fri 9am-5pm. Close walking distance to transport links, shops, restaurants/takeaways and green spaces. Please note photos on this listing may be of similar or identical properties in the same development. A video tour of the actual flat is available on request. (Five weeks deposit required).

EPC - D. CT - B.

Applicants may require a UK homeowner guarantor to apply.

COUNCIL TAX 

Band: B

PARKING 

Yes

ACCESSIBILITY 

Lift access

# Smith House, Elmwood Avenue, Feltham, Hounslow

