



Breakspears Road, SE4

£3,100 Per calendar month

**Dexters**



## Breakspears Road, SE4

Located in the heart of the Brockley Conservation Area, this beautifully refurbished three double bedroom period maisonette offers a spacious bay-fronted room, a large reception leading directly onto a private garden, and a brand new separate kitchen. There are two well-sized double bedrooms and two modern bathrooms, one featuring underfloor heating. The property further benefits from off-street parking and side access to the garden, making this a rare and highly desirable home in a sought-after location.

The flat is conveniently located for Brockley station from where there are fast and frequent services into London Bridge in around 10 mins. Getting to work or a night out in east London couldn't be easier with London Overground services direct to Shoreditch. You can also walk to St John's station for services into Charing Cross.

### Features

- Newly Refurbished
- Three Double Bedrooms
- Brand New Eat-In Kitchen
- Large Private Garden
- Newly Fitted Double Glazing
- Brockley Conservation Area

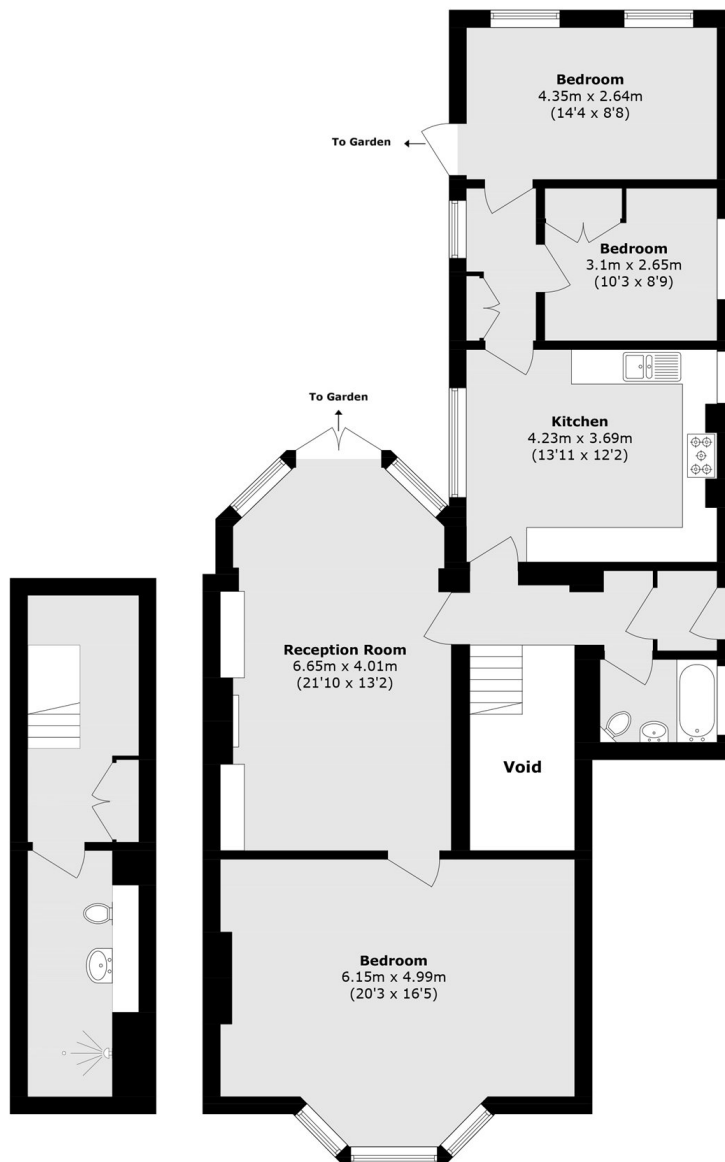








# Breakspears Road, London, SE4



Cellar

Ground Floor

Total area (approx.): 106.2 sq. m (1,143.1 sq. ft)  
(Excluding Void)