



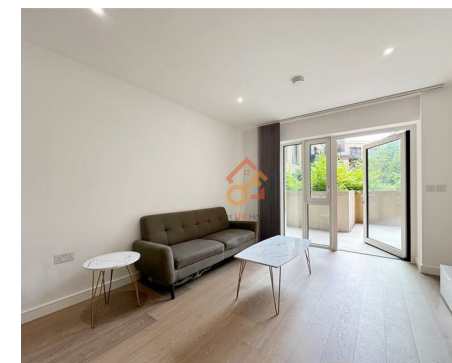
Let **UK** Home

1 Bedrooms

Flat

Located in London

£2,900 Per Month



info@letukhome.co.uk

<https://www.letukhome.co.uk/>

01795 358 886



Parr's Way London

W6 9YJ



Let UK Home are excited to offer this spectacular one bedroom apartment in the heart of Holland House part of the Fulham Reach.

The flat comprises a spacious open kitchen with a stylishly attached dining area, a magnificent living room leading to a spacious private balcony, one bright bedroom with wardrobe and one modern bathroom. A virtual viewing is provided.

Residents of this exceptional development will have exclusive use of the spa, indoor swimming pool, sauna&steam room, gymnasium, virtual golf suite, snooker room, private cinema room, wine cellar, residents lounge and co-working space. Furthermore, residents will also benefit from a concierge and an unrivalled selection of shops, bars, restaurants, leisure facilities and beautiful landscaped courtyards.

Fulham Reach is set in an open parkland. The city's treasured natural beauty can be easily explored on foot or by bike. On the banks of the Thames, residents can also add interest to their lives through traditional British boating. In addition, shopping districts including Chelsea, Kensington and Knightsbridge and concert venue the Royal Albert Hall are all within driving and tube distance. Residents can easily experience London's shopping and leisure fun. The area around Fulham Reach is also home to many stylish restaurants. The high-end vegetarian restaurant The Gate, the Michelin-starred coffee shop The River Cafe, and the scenic riverside restaurant & bar The Blue Anchor are all within walking distance.

The apartment is within walking distance to Hammersmith Station. This is an

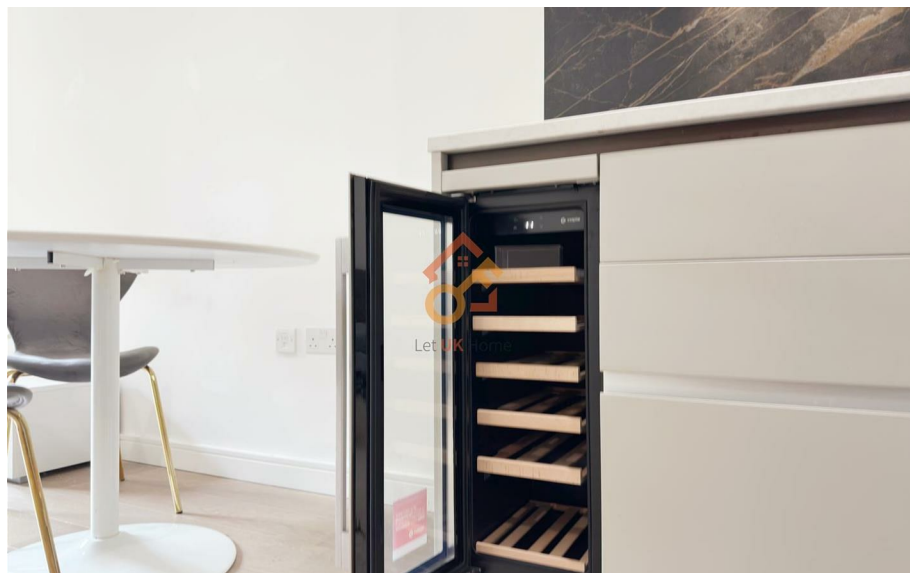
Parr's Way London

£2,900 Per Month



- Ground Floor
- 24h Security
- The Gym
- Cinema & Game Room
- Virtual Viewing Available

- Concierge Service
- Swimming Pool
- Sauna & Steam Room
- Virtual Golf Suite
- EPC Rating: B



TOTAL AREA	52.8 SQM	568.3 SQFT
Kitchen	3.28m x 2.22m	10' 9" x 7' 3"
Living/Dining	3.56m x 4.29m	11' 8" x 14' 1"
Bedroom	3.26m x 3.11m	10' 8" x 10' 2"
Terrace Area	14.7 sqm	158.6 sqft



东南朝向, 面朝花园



Let **UK** Home

3F 2 Eastbourne Terrace
Paddington
London
W2 6LG

01795 358 886

info@letukhome.co.uk

Council Tax Band: E

Local Authority:

Agents Note: Whilst every care has been taken to prepare these particulars, they are for guidance purposes only. All measurements are approximate and are for general guidance purposes only and whilst every care has been taken to ensure their accuracy, they should not be relied upon and potential buyers/tenants are advised to recheck the measurements.

Energy Efficiency Rating		Current	Potential
Very energy efficient - lower running costs			
(92 plus) A			
(81-91) B		85	85
(69-80) C			
(55-68) D			
(39-54) E			
(21-38) F			
(1-20) G			
Not energy efficient - higher running costs			
England & Wales	EU Directive 2002/91/EC		

<https://www.letukhome.co.uk/>