



## Ewell Road, KT6

£550,000

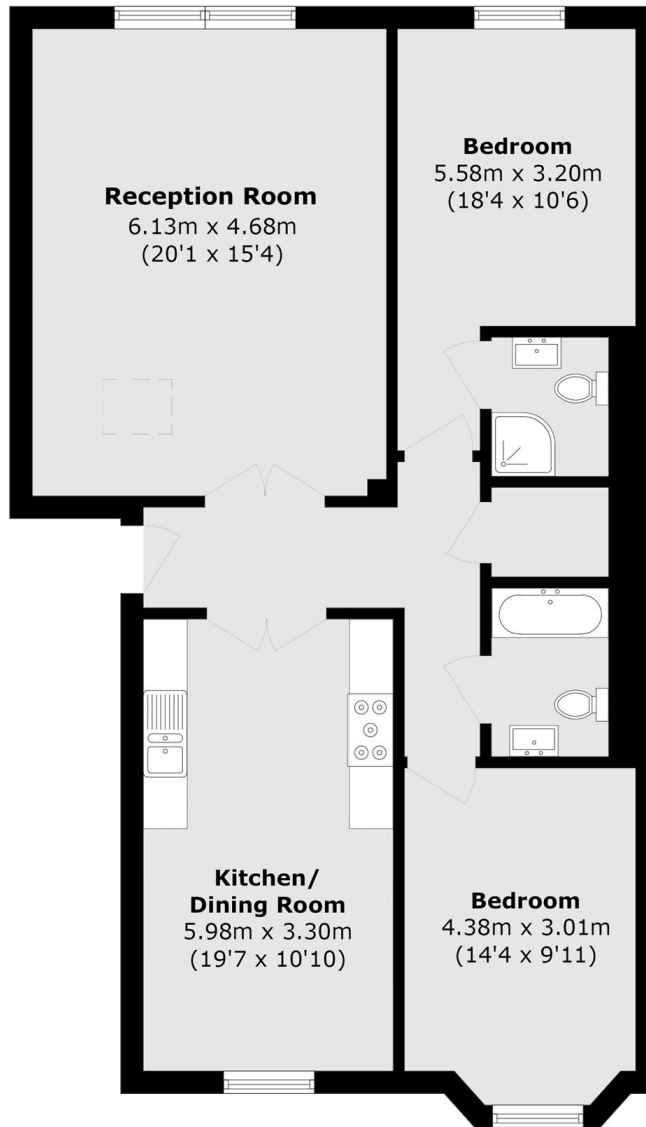
A larger than average and immaculately presented top floor apartment set within an imposing period style building. Accommodation includes two bright and spacious bedrooms, two bathrooms, a modern fully integrated eat in kitchen and an expansive reception room. Further benefits include allocated off street parking, a communal garden, a share of the freehold and a lift within the building.

Glanmor House is under a mile away from both Tolworth and Surbiton mainline train stations with their quick links to London Waterloo in as fast as 16 minutes. There are local shops, bars and restaurants on your doorstep as well as the popular 'Coffee On The Corner' situated close by. Fishponds Park and Alexandra Park are also very local.

### Features

- Top Floor Apartment
- Two Double Bedrooms
- Two Bathrooms
- Lift Operated Building
- Large Communal Garden
- Allocated Off Street Parking

# Ewell Road, Surbiton, KT6



Total area (approx.): 99.6 sq. m (1072.0 sq. ft)