



Guide Price
£165,000

Leasehold

3x  1x  1x 

**Basement Flat, Victoria
Park, Dover, Kent, CT16**

OVER 60?

Secure this property
for up to **59% less!**

Wards
Helping you move forwards



Main features

- **Stunning Grade II lower ground floor garden apartment**
- **Private entrance, courtyard and garden**
- **No onward chain**
- **Perfect for a variety of buyers including first time buyers, second homes, buy to let or air BnB**
- **Central location**

Accommodation

SPLIT LEVEL LOWER GROUND FLOOR

Kitchen : 14'10 x 7'7 (4.52m x 2.31m)

Lounge : 16'2 x 15'5 (4.93m x 4.70m)

Toilet

Bathroom

Inner Hallway

Bedroom 1 : 18'2 x 9'3 (5.54m x 2.82m)

Bedroom 2 : 10'8 x 7'6 (3.25m x 2.29m)

Bedroom 3 : 13'10 x 6'6 (4.22m x 1.98m)

OUTSIDE

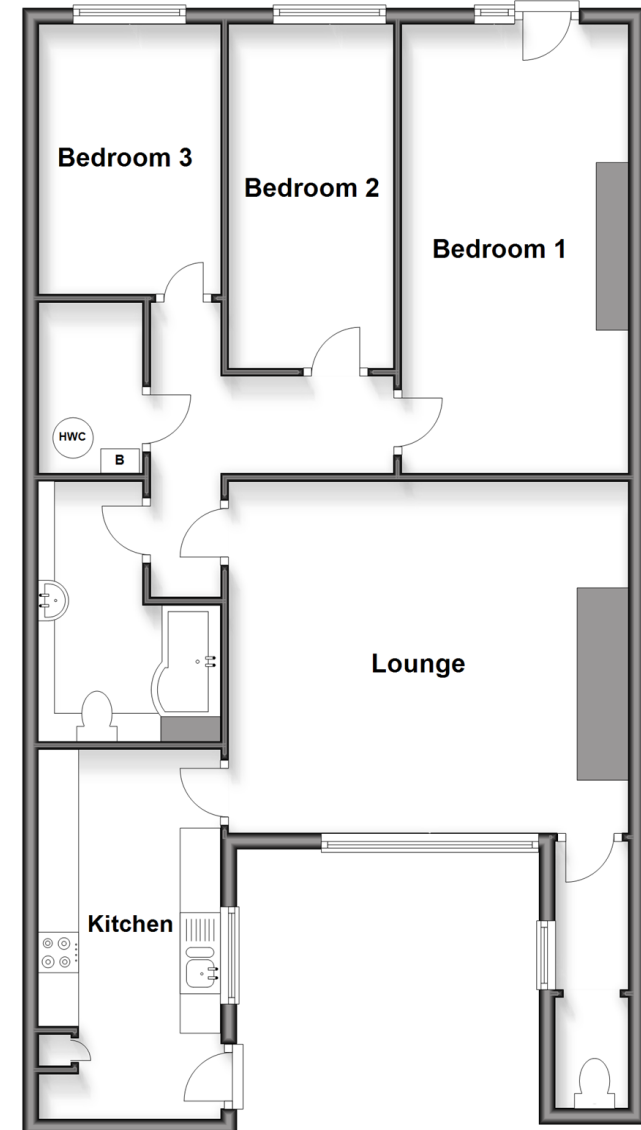
Courtyard Garden

Workshop/Outbuilding

Communal Gardens

Split Level Lower Ground Floor

Approx. 84.2 sq. metres (906.8 sq. feet)



Call Dover - 01304 214876 ■ wardsof Kent.co.uk

■ Through a Homewise Home For Life Plan people aged 60+ can secure this property for up to 59% less, by purchasing a Lifetime Lease



10736272/20260408/GH/CDH