



Great Cumberland Place, W1H

£4,500 Per calendar month

A newly refurbished two bedroom apartment set on the third floor of a period conversion in an attractive Georgian crescent just moments from Marble Arch.

Great Cumberland Place is located just north of Hyde Park with nearby transport links including Marble Arch (Central line) and Bond Street (Central and Jubilee) underground stations close by. Perfectly positioned for the internationally renowned shops and Restaurants of Bond Street and the West End.

Features

- Newly Refurbished
- Two Bedroom Apartment
- One Bathroom
- Third Floor With Lift
- Furnished
- Close To Marble Arch

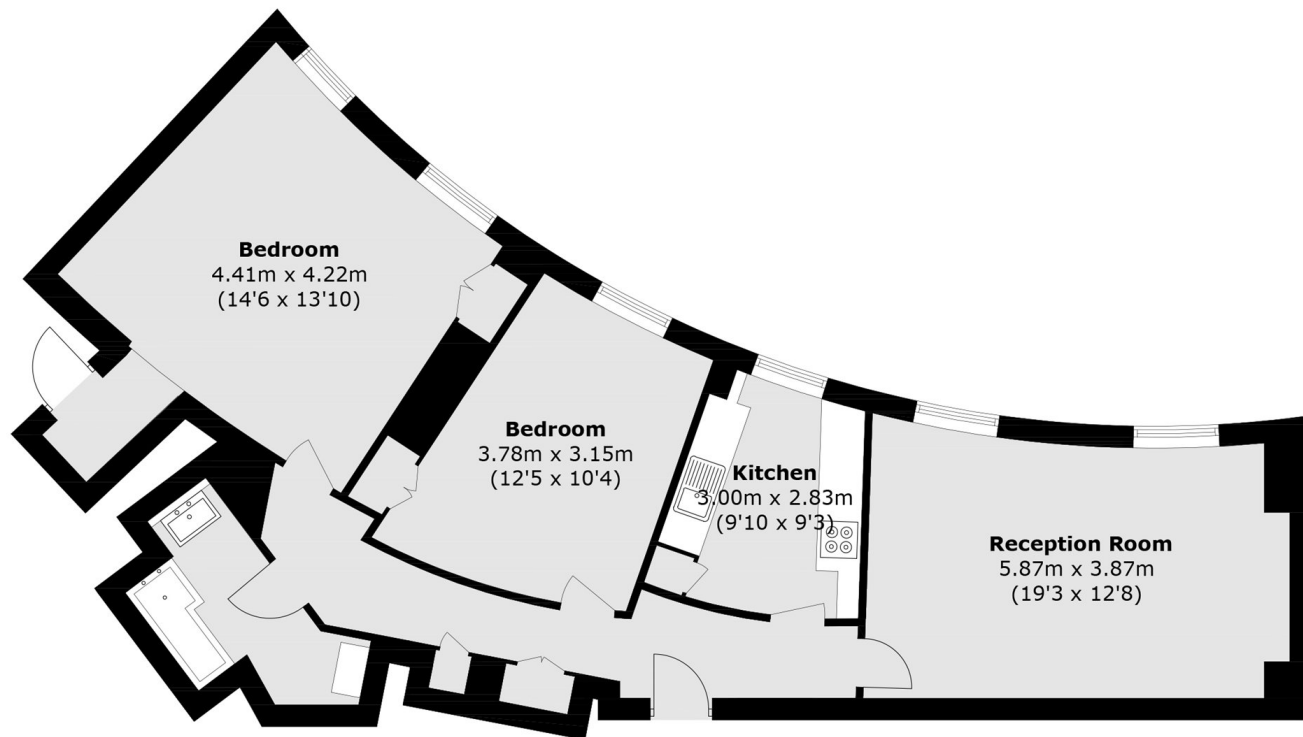


Great Cumberland Place, W1H

The accommodation comprises bright reception/dining room, well fitted kitchen, two double bedrooms and modern bathroom.



Great Cumberland Place, London, W1H



Third Floor

Total area (approx.): 82.7 sq. m (890.2 sq. ft)