



**Holmbush Road, SW15**

**£875,000**

**Dexters**



## Holmbush Road, SW15

A beautifully presented two double bedroom garden flat with its own private entrance, offering 914 sq ft of well-balanced living space, ideally positioned on a quiet residential road in the heart of East Putney.

The property features a superb open-plan kitchen/reception room with a contemporary fitted kitchen and generous space for dining and entertaining. Large bifold doors open directly onto an exceptional private rear garden, complete with a decked seating area and extensive lawn - ideal for outdoor dining and summer entertaining.

Both bedrooms are well proportioned doubles, including a spacious principal bedroom with built-in storage and en-suite shower room. The second double bedroom is served by a stylish family bathroom.

Holmbush Road is a quiet residential street conveniently located close to the cafés, bars, restaurants and shopping facilities of central Putney, as well as excellent transport links including Putney mainline station and East Putney Underground station.

(\*These photos have been virtually staged, please rely on the floorplan and your own measurements regarding exactly how furniture would fit in each room.)

### Features

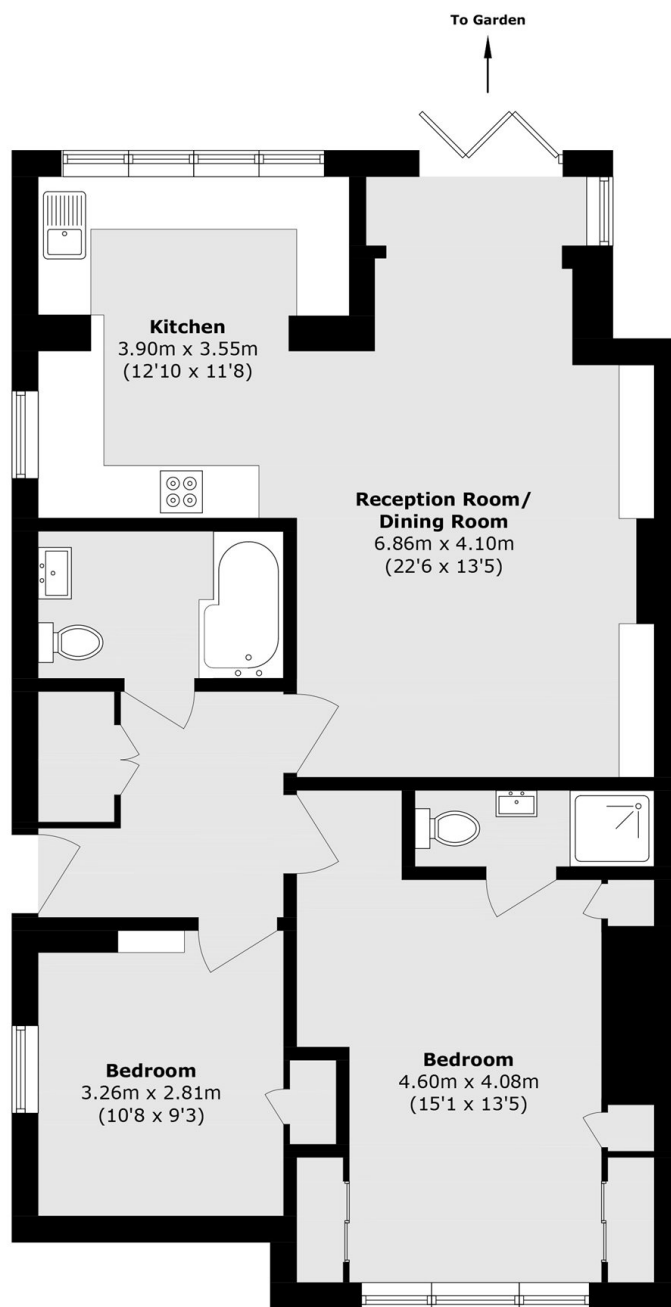
- Private Garden
- Two Bedrooms
- Two Bathrooms
- Period
- 914 sq. ft







# Holmbush Road, London, SW15



## Ground Floor

Total area (approx.): 84.9 sq. m (913.9 sq. ft)

# Dexters

Putney  
176 Putney High Street  
London  
SW15 1RS

Sales  
020 8789 9999

Energy Rating: . We aim to make our particulars both accurate and reliable. However they are not guaranteed; nor do they form part of an offer or contract. If you require clarification on any points then please contact us, especially if you're traveling some distance to view. Please note that appliances and heating systems have not been tested and therefore no warranties can be given as to their good working order.

 **RICS** | Regulated  
Estate Agent  
and Letting Agent

[dexters.co.uk](http://dexters.co.uk)