



1 Corrib Road, Nuneaton, CV10 0QF
Offers over £215,000

ENTRANCE HALL

Stairs to first floor

KITCHEN DINING ROOM

Double glazed window to front aspect, fitted with a modern range of floor and wall units with work surfaces, integrated and free standing appliances, dining space

CLOAKROOM WC

Low level wc. wash hand basin, tiled splashbacks

FIRST FLOOR LANDING

Loft access, carpet flooring

BEDROOM

Double glazed window, carpet flooring

EN SUITE

Shower enclosure, low level wc, wash hand basin

BEDROOM

Double glazed window, carpet flooring

BEDROOM

Double glazed window, carpet flooring

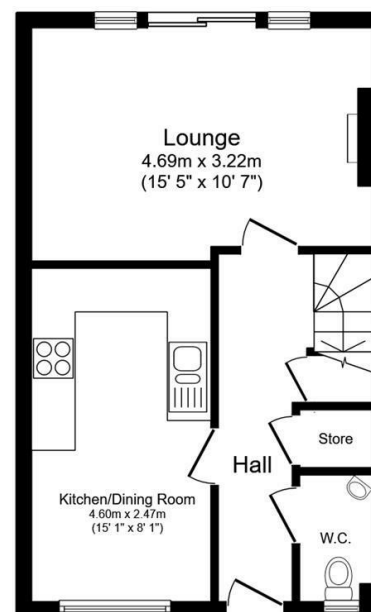
BATHROOM

Matching white bathroom suite, tiled surrounds

OUTSIDE

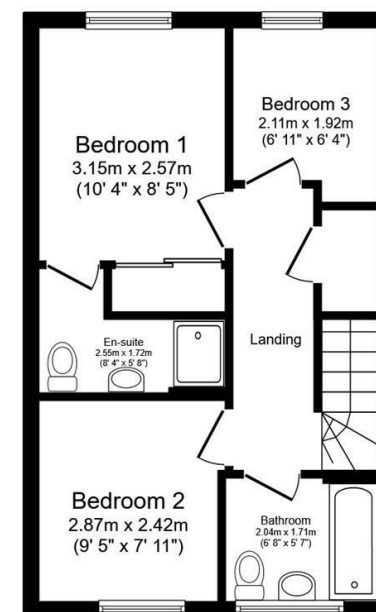
Laid mainly to lawn, fully enclosed, gated side access.

Parking for two vehicles to the front of the property



Ground Floor

Floor area 37.1 sq.m. (400 sq.ft.)



First Floor

Floor area 37.1 sq.m. (400 sq.ft.)

Total floor area: 74.3 sq.m. (800 sq.ft.)

This floor plan is for illustrative purposes only. It is not drawn to scale. Any measurements, floor areas (including any total floor area), openings and orientations are approximate. No details are guaranteed, they cannot be relied upon for any purpose and do not form any part of any agreement. No liability is taken for any error, omission or misstatement. A party must rely upon its own inspection(s). Powered by www.Propertybox.io