

Great Western Terrace

Cheltenham

NO ONWARD CHAIN Attractive three-bedroom period terrace near Cheltenham centre. Features basement, garden, and residents' parking. Ideal for families or investors. Close to shops and schools.

Council Tax band: B

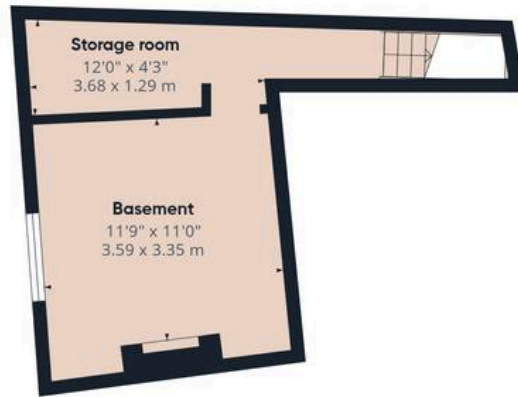
Tenure: Freehold

EPC Energy Efficiency Rating: D

EPC Environmental Impact Rating: D

- Attractive Period Terraced Home
- Three Well-Proportioned Bedrooms
- NO ONWARD CHAIN
- Walking Distance To Cheltenham Town Centre
- Ideal For First-Time Buyers, Families Or Investors
- Separate Living And Dining Rooms
- Modern Kitchen With Ample Storage
- Large Basement Offering Additional Space
- Private Enclosed Rear Garden
- Convenient Access To Local Amenities And Transport Links

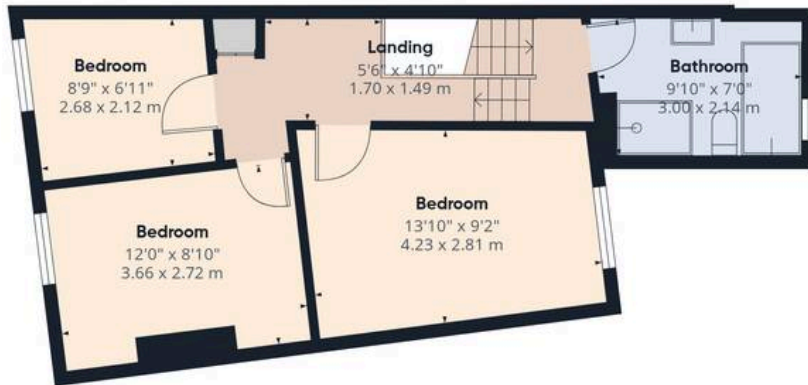




Ground Floor



Floor 1



Floor 2

Approximate total area⁽¹⁾

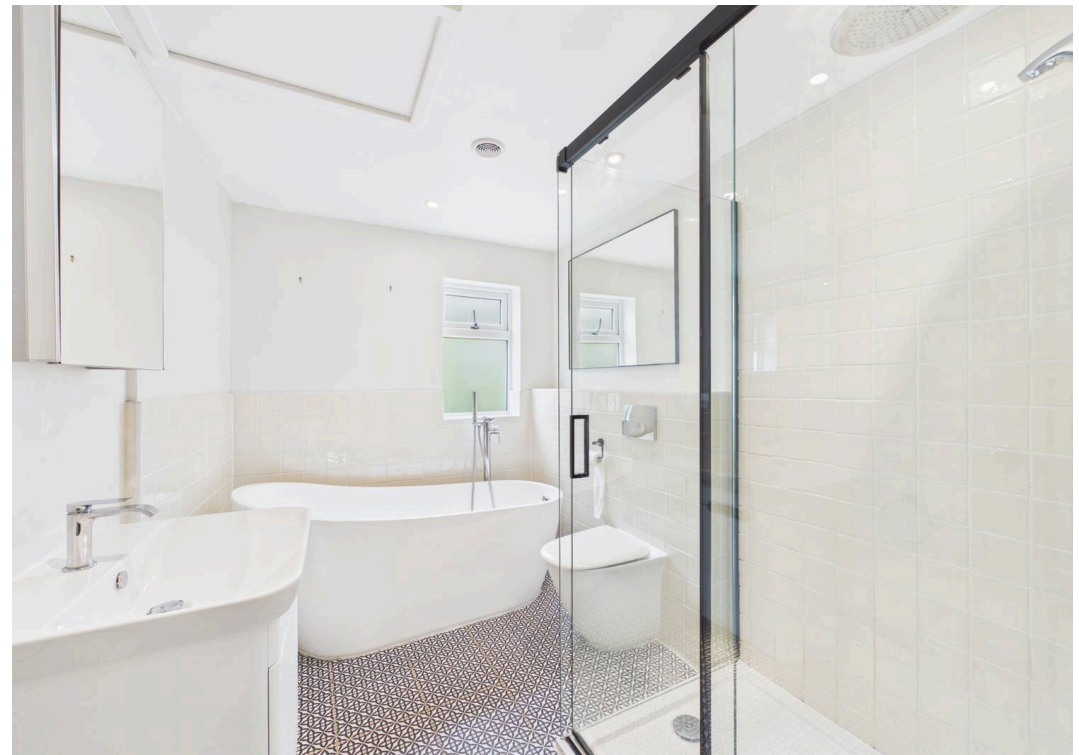
1134 ft²

105.4 m²

(1) Excluding balconies and terraces

Calculations reference the RICS IPMS 3C standard. Measurements are approximate and not to scale. This floor plan is intended for illustration only.

GIRAFFE360







Move Estate Agents Cheltenham

1 The Clarence Clarence Parade, Cheltenham - GL50 3NY

01242 257333

cheltenham@move.uk.net

move.uk.net/

move
Property Sales & Lettings