



Apartment (EPC Rating: C)

ADDISCOMBE ROAD, WATFORD,
HERTFORDSHIRE, WD18 0ND
PCM

£1,500 PCM

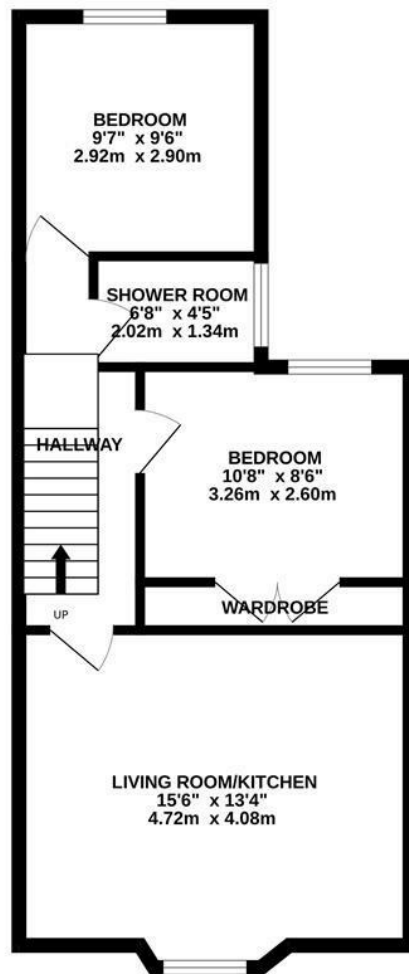
2 Bedroom Apartment located in Hertfordshire

BEAUTIFULLY FINISHED, MODERN TWO BEDROOM APARTMENT IN CENTRAL WATFORD WITH OFF ROAD PARKING FOR ONE CAR!! - 187FT FROM CHATER PRIMARY SCHOOL - 0.4 MILES TO WATFORD GIRLS GRAMMAR SCHOOL AND MINUTES WALK INTO WATFORD TOWN CENTRE! This property is located in the heart of Watford offering quick access to a variety of amenities. This first floor apartment is finished with wood effect laminate flooring and is comprised of an open plan living room/kitchen area, two double bedrooms and a fully tiled bathroom. There is also off road parking for one car, gas central heating and double glazing. This property makes the ideal home for a professional couple, sharers or a small family. Offered unfurnished and beginning of May.



WATFORD LETTINGS | 12 MARKET STREET, WATFORD, HERTFORDSHIRE, WD18 0PD

GROUND FLOOR
493 sq.ft. (45.8 sq.m.) approx.



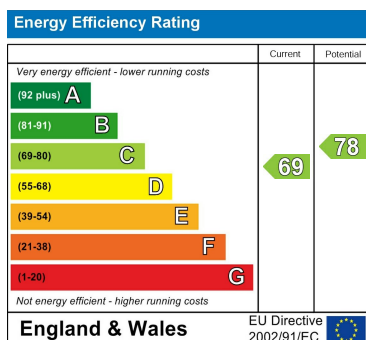
TOTAL FLOOR AREA : 493 sq.ft. (45.8 sq.m.) approx.

Whilst every attempt has been made to ensure the accuracy of the floorplan contained here, measurements of doors, windows, rooms and any other items are approximate and no responsibility is taken for any error, omission or mis-statement. This plan is for illustrative purposes only and should be used as such by any prospective purchaser. The services, systems and appliances shown have not been tested and no guarantee as to their operability or efficiency can be given.
Made with Metropix ©2025

Council Tax Band

C

Energy Performance Graph



Call us on

01923 220 012

enquiries@warrenanthony.co.uk

www.warrenanthony.co.uk

Agents Note: Whilst every care has been taken to prepare these particulars, they are for guidance purposes only. All measurements are approximate and are for general guidance purposes only and whilst every care has been taken to ensure their accuracy, they should not be relied upon and potential buyers are advised to recheck the