



AMBLESIDE AVENUE, SW16

£375,000

New build
One bedroom
Split level
Open plan living
Modern Interior
EPC rating: C

@marshandparsons
marshandparsons.co.uk

MARSH &
PARSONS

ABOUT THE PROPERTY

Newly converted 1 bedroom flat. Finished to a high standard throughout. The flat is separated over two floors with the living accommodation found on the top floor of the building. This period conversion has been done with a contemporary finish and is flooded with natural light throughout. The double bedroom and stylish bathroom are located on the first floor. The property also has access to communal gardens.

Ambleside Avenue is ideally located within walking distance to all local amenities of Streatham. The large open spaces of Tooting Bec Common are within easy reach as well. Streatham station, as well as local bus routes allow frequent access into and out of the City.







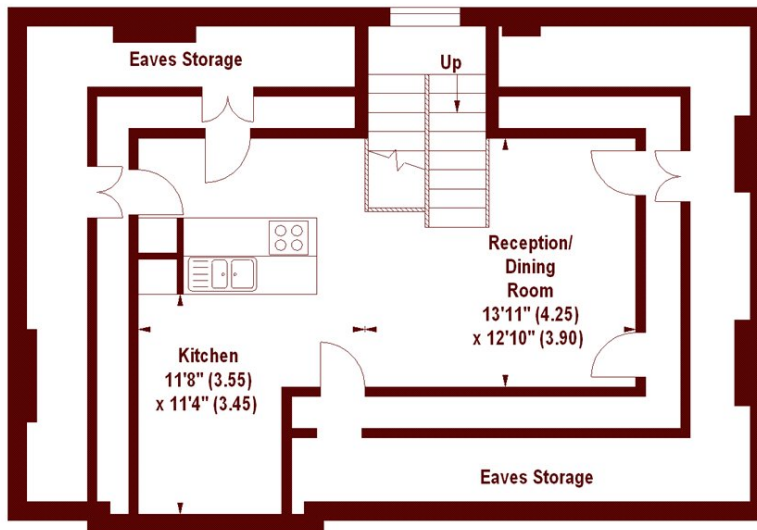
STEP INSIDE AMBLESIDE AVENUE

Ambleside Avenue, SW16

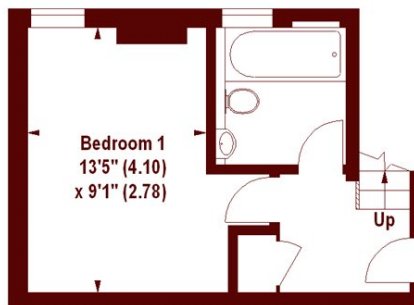
APPROX. GROSS INTERNAL FLOOR AREA 1163 SQFT / 108.04 SQM
(Including Eaves Storage)

Eaves Storage
506 SQFT / 47.01 SQM

Key :
CH - Ceiling Height



SECOND FLOOR



FIRST FLOOR

The floor plan is not to scale and measurements and areas shown are approximate and therefore should be used for illustrative purposes only. The plan has been prepared in accordance with the RICS code of Measuring Practice and whilst we have confidence in the information produced, it must not be relied on. If there is any aspect of particular importance, you should carry out or commission your own inspection of the property.
Copyright of FeaturePRO.

Streatham
020 8671 0171

Energy Rating: We aim to make our particulars both accurate and reliable. However, they are not guaranteed; nor do they form part of an offer or contract. If you require clarification on any points then please contact us, especially if you're traveling some distance to view. Please note that appliances and heating systems have not been tested and therefore no warranties can be given as to their good working order

MARSH &
PARSONS