

Adam Walk

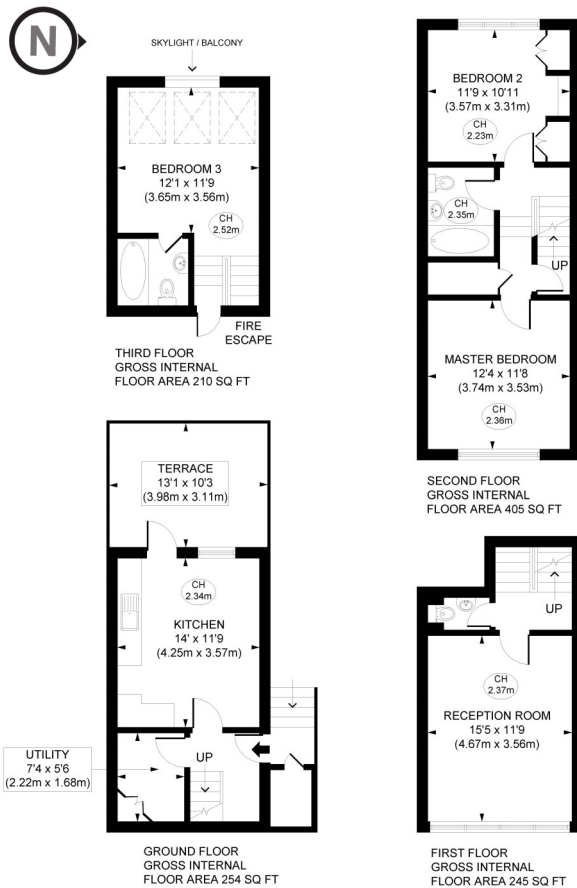
Fulham, London, SW6

 LAWSONRUTTER





ADAM WALK CRABTREE LANE, SW6



APPROX. GROSS INTERNAL FLOOR AREA 1114 sq. ft / 103.58 sq. m

Illustration for identification purposes only. Not to scale. Floor Plan Drawn According To RICS Guidelines.

Adam Walk

Fulham, London, SW6

Price Guide: £900,000

Located on the River Thames towpath, an exceptional three-double-bedroom, two bathroom end of terrace maisonette with a 13'1 x 10'3 west-facing terrace with superb river views. The property - which has its own front door - comprises a cloakroom, a WC, a stylish fully fitted 14' x 11'9 kitchen/breakfast room with doors opening onto the terrace, a spacious 15'5 x 11'9 living room, two bedrooms and a family bathroom on the first floor and a lovely third bedroom with en-suite bathroom on the top floor boasting direct river views through 3 Velux windows (incl. a Velux Cabrio balcony). Adam Walk is a quiet enclave benefitting from all the delights of the River Thames towpath and within a 10 – 12 minute walk to Hammersmith underground station. There are a variety of shops, restaurants, bars and pubs nearby including the River Café, Sam's Brasserie, and the Crabtree gastro pub, as well as the Riverside Studios which boasts a cinema, two theatres, art gallery, restaurant and bar. Leasehold. . .

Exceptional three double bedroom two bathroom end of terrace maisonette with own front door
 Excellent location | Spacious living room | Stylish kitchen/breakfast room | Superb river views
 Private terrace | Stones throw to delights of the River Thames towpath | No onward chain
 Close to transport & numerous amenities | 1114 Sq. Ft. (103.50 Sq. M.) Leasehold

All viewings by appointment through our **Hammersmith Office**:

T: 020 7385 7000
 E: hammersmith@lawsonrutter.com

192 Fulham Palace Road, London W6 9PA

In accordance with the Property Misdescription Act 1991, we wish to emphasise that the information given in these particulars is intended to help you decide whether you wish to view this property. Whilst every care is taken to ensure the accuracy of these particulars please note that all measurements are approximate and we are, for the accuracy of other information, reliant on what the seller has provided. We strongly recommend that you rely on your own inspections and those of your advisors to establish the details of any aspects which are of particular importance. Please note that we have not undertaken any survey of the property or the appliances within it and the buyer must rely on their own investigations prior to exchange of contracts.

