



# Hyde Park Gate

Kensington, SW7

£3,250 per month  
(£750 per week)

Exclusive Listing - A well presented two double bedroom apartment in a portered building opposite Kensington Gardens.

The property offers well proportioned bedrooms, modern semi open plan kitchen, two modern bathrooms and wooden flooring throughout.



# Hyde Park Gate

## Kensington, SW7

- Two Double Bedrooms
- Two Bathrooms
- Porter
- Furnished
- Upper Floor (with lift)
- Moments away from Hyde Park and Kensington Palace

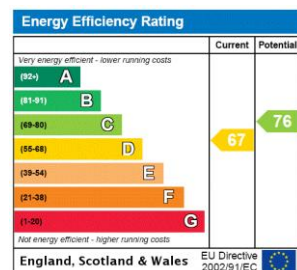


Exclusive Listing - A well presented two double bedroom apartment in a portered building opposite Kensington Gardens.

The property offers well-proportioned bedrooms, modern semi open plan kitchen, two modern bathrooms and wooden flooring throughout.

Located just moments away from Hyde Park and Kensington Palace, this development is in very high demand.

**Minimum Term:** 6 months  
**Deposit Required:** £3,750.00  
**Local Authority:** Royal Borough of Kensington & Chelsea  
**Council Tax Band:** G  
**EPC Rating:** D  
**Furnished**



### Chestertons Kensington Lettings

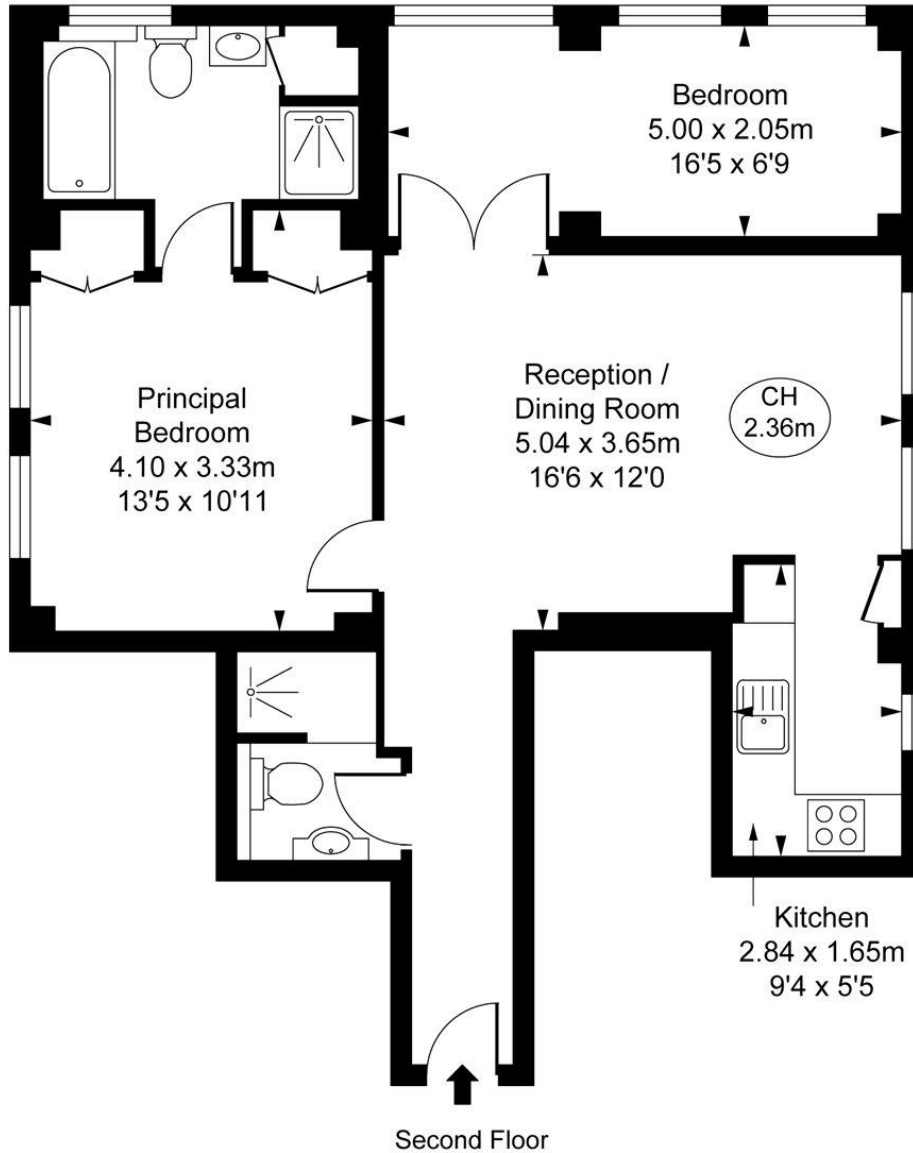
116 Kensington High Street  
 Kensington  
 London  
 W8 7RW  
 lettings.kensington@chestertons.co.uk  
 02079377260  
 chestertons.co.uk

Additional tenant charges apply (fees apply to non-AST tenancies only)  
 Tenancy Agreement Fee: £300  
 References per Tenant/Guarantor: £60  
 Inventory check (approx. £100 – £250 inc. VAT)  
[chestertons.co.uk/property-to-rent/applicable-fees](http://chestertons.co.uk/property-to-rent/applicable-fees)

Hyde Park Gate, SW7  
Approximate Gross Internal Area  
60.95 sq m / 656 sq ft



( CH = Ceiling Heights )



This plan is not to scale. It is for guidance and not for valuation purposes.  
All measurements and areas are approximate only, and have been prepared in accordance with the current edition of the RICS Code of Measuring Practice.  
© Fulham Performance

