



Gloucester Terrace, W2 £650,000

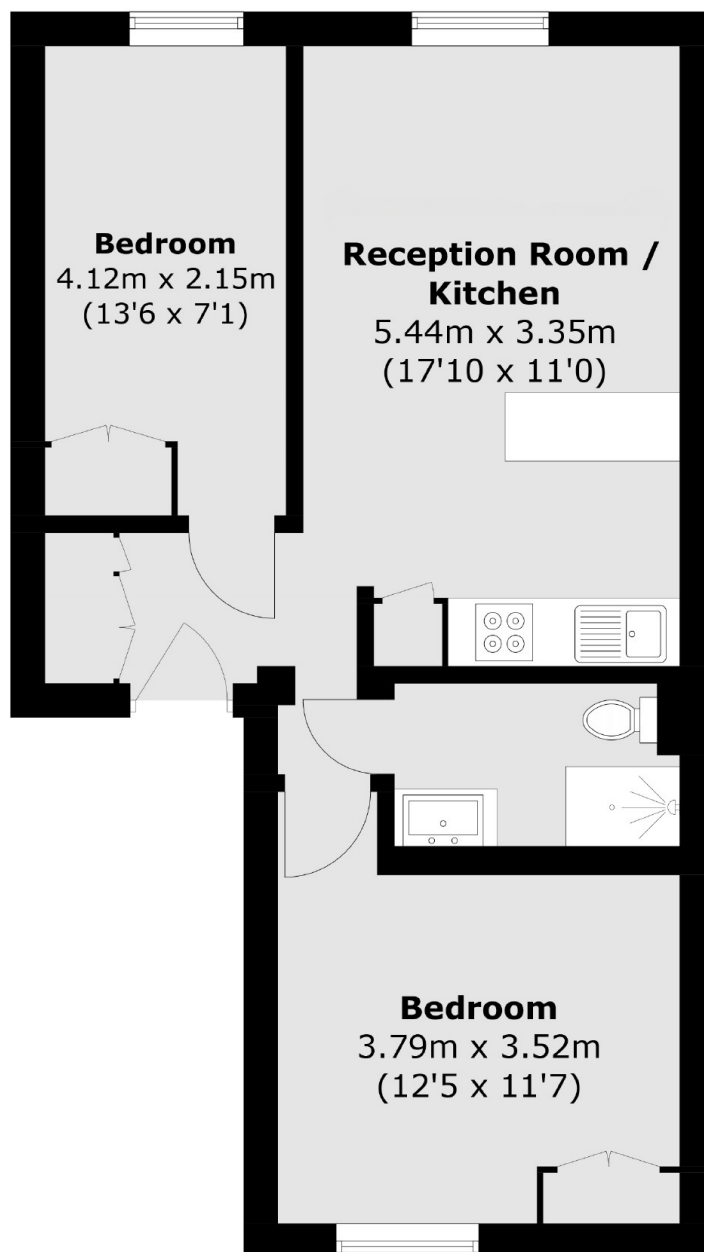
A recently refurbished two bedroom apartment in a white stucco fronted Grade II listed building. The property has an open plan reception with a modern fitted kitchen and breakfast bar, room to dine and wooden flooring,

Located on the Southerly end of Gloucester Terrace, the property is adjacent to Hyde Park, and Lancaster Gate station with Paddington Station nearby. In addition there are multiple restaurants, shops and pubs within close proximity.

Features

- Two Bedrooms
- Open Plan
- Modern Kitchen
- Recently Refurbished
- White Stucco Fronted
- Hyde Park

Gloucester Terrace,
London, W2



Total area (approx.): 47.9 sq. m (515.6 sq. ft)