



**Woodhall Road**  
**Kidsgrove, ST7 4QY**

- SEMI DETACHED BUNGALOW
- TWO BEDROOMS, BATHROOM
- SOME FURTHER POTENTIAL
- GARDENS TO FRONT & REAR
- COMPLETION AUTUMN 2026
- GARAGE, UPVC D/G, GCH
- HALL, KITCHEN, LOUNGE/DINING ROOM
- EASY ACCESS TO THE A500/A34

**£149,950**





## Property Description

### INTRO

A semi detached bungalow with further potential, offered For Sale with a popular convenient location, available for completion approx Autumn 2026, comprising hall, kitchen, lounge/dining room, bedroom one with french doors to the garden, bedroom two, a bathroom. Externally a paved frontage for parking, driveway to the garage, a rear garden area. UPVC double glazing & gas central heating. Some further potential. The property is located within Woodhall Road with access to all facilities, road rail links, walkways etc.. Viewing essential. (draft details subject to approval)

### ENTRANCE HALL

UPVC external access door, radiator, access to the loft area, store cupboard with the gas boiler.

### KITCHEN

11' 2" x 7' 10" (3.4m x 2.39m)

A range of fitted base and wall units, work surfaces, window to the front, single drainer sink, built in oven, hob, splash back tiling, space for washing machine and fridge



freezer.

#### LOUNGE/DINER

17' 7" x 11' 9" (5.36m x 3.58m)

A bow window to the front, radiator.

#### BEDROOM ONE

12' 3" x 8' 11" (3.73m x 2.72m)

French doors to the rear garden, radiator.

#### BEDROOM TWO

10' x 8' 3" (3.05m x 2.51m)

Window to the rear, radiator.



#### BATHROOM

Comprising a panelled bath, low level W.C wash hand basin, splash back tiling, window to the side. Radiator.

#### EXTERNALLY

A paved frontage for parking, a driveway leads along side the bungalow to the concrete sectional garage.

#### REAR GARDEN

A paved patio area and garden area.

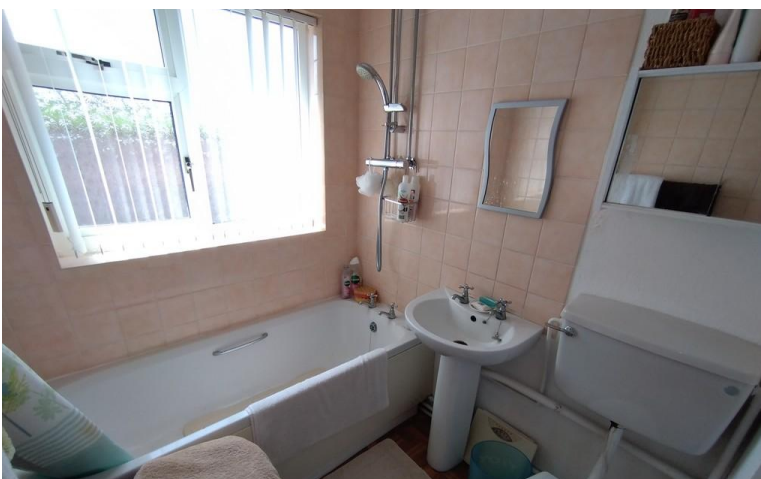
#### VIEWING ARRANGEMENTS

Strictly by appointment with the selling agents Shaw's & Company Estate Agents Ltd Telephone 01782 787840 or you can email [enquiries@shawsandco.co.uk](mailto:enquiries@shawsandco.co.uk)



#### FIXTURES AND FITTINGS

NOTE The Agent has not tested any equipment, fittings or services and cannot verify that they are in working order. All items normally designated as fixtures and fittings are excluded from the sale unless otherwise stated. The Agent would also point out that the photographs are taken with a non standard lens. These particulars are set out as a guide and do not form part of a contract, neither has the agent checked the legal documents, purchasers/tenants should confirm the postcode for themselves. All room sizes are approximate at the time of inspection.



Please note, all of our client's properties are sold on a 'SOLD AS SEEN' basis - Unless otherwise stated.

#### MORTGAGES

If you are seeking a mortgage for a property or require independent financial advice, we can provide a free quotation, please Telephone 01782 787840.



#### VALUATION

Do you have a property to sell? if so Shaw's & Company Estate Agents Ltd can offer a free valuation and offer No Sale No Fee terms (subject to agency agreement) and advise on the method of sale to suit your requirements. Your property will be marketed using the latest methods and internet advertising on multiple internet web sites including Rightmove.co.uk and Zoopla.co.uk. We are open daily, please call us on 01782 787840 .

#### LOCAL AUTHORITY

Newcastle Borough Council.

#### COUNCIL TAX BAND B

#### EPC RATING (PDF available online)

Current: Potential:



43 Liverpool Road  
Kidsgrove  
Stoke-On-Trent  
Staffordshire  
ST7 1EA

[www.shawsandco.co.uk](http://www.shawsandco.co.uk)  
[enquiries@shawsandco.co.uk](mailto:enquiries@shawsandco.co.uk)  
01782787840

Agents Note: Whilst every care has been taken to prepare these sales particulars, they are for guidance purposes only. All measurements are approximate and are for general guidance purposes only and whilst every care has been taken to ensure their accuracy, they should not be relied upon and potential buyers are advised to recheck the measurements