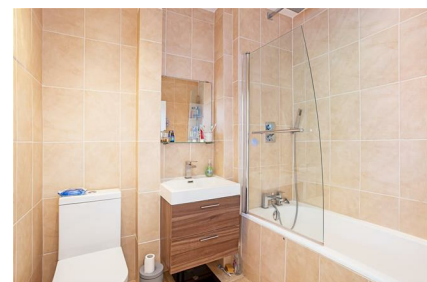


# Parkheath

*Sold on Service*

**Loveridge Road NW6**

**£1,945 PCM (£448 per week) - Camden Band C**



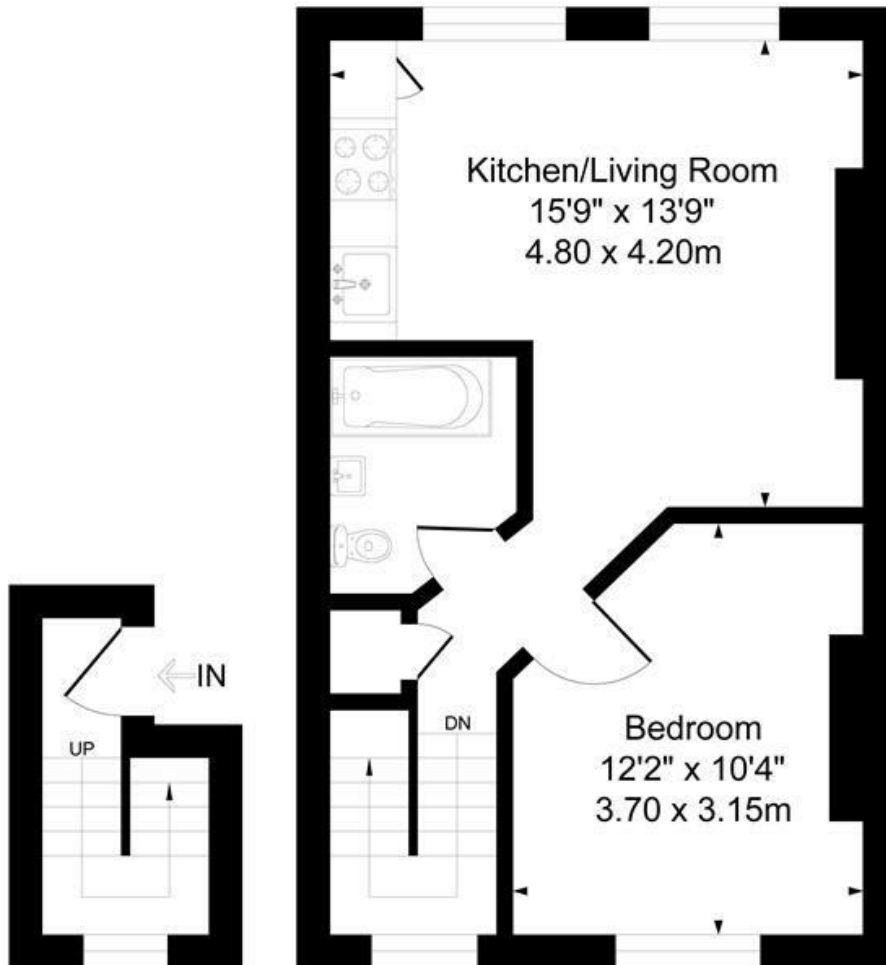
Attractive one-bedroom apartment  
Entrance at first floor level  
Reception with open-plan kitchen  
Good size rear-facing bedroom  
Close to West Hampstead & Kilburn amenities

Top floor period conversion  
Bright rooms throughout  
Wood flooring  
Tiled bathroom/WC  
EPC: Rating C, Council Tax: Camden, band C

West Hampstead Office 020 7794 7111

# Loveridge Road

Approximate Gross Internal Area = 42 sq m / 451 sq ft



**First Floor**

**Second Floor**

Measured in accordance with RICS guidelines. Every attempt is made to ensure accuracy  
However all measurements are approximate.  
The Floor plan is illustrative purposes Only and is not to scale  
ELLIE CLAIRE PHOTOGRAPHY LTD

The particulars do not constitute part of an offer or contract. The particulars, including text, photographs and plans, are for the guidance only of prospective purchasers/tenants and must not be relied upon as statements of fact. The descriptions provided therein represent the opinion of the author and whilst given in good faith should not be construed as statements of fact. Nothing in these particulars shall be deemed a statement that the property is in good condition or otherwise or that any services or facilities are in good working order. All measurements are approximate