



Chumleigh Walk, KT5

£1,225,000

Dexters



Chumleigh Walk, KT5

This wonderful semi-detached family home has been extended to a high standard throughout. Accommodation includes four bedrooms, two bathrooms and off-street parking to the front.

The ground floor offers the ideal space to entertain guests or relax with the family. There is a front reception room, a study, a utility room with w/c and a modern spacious kitchen/diner with bi-folding doors on to the garden.

On the first floor, there are two double bedrooms, one single bedroom and a family bathroom. On the second floor, there is a spacious main bedroom with stylish and contemporary en suite bathroom.

Outside, there is a large private rear garden with a decking area and a lawn. There is a driveway with plenty of off-street parking to the front and potential to extend further above the study (STPP).

With both Surbiton and Berrylands train stations, the River Thames and Kingston town centre all within a mile, Chumleigh Walk is situated in a fantastic location.

Features

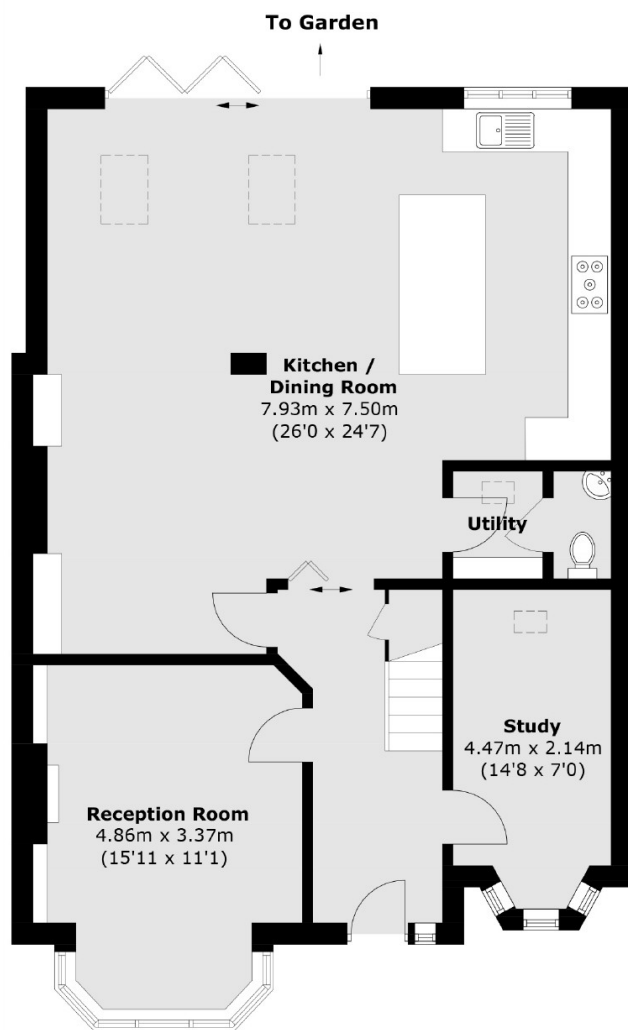
- Semi-Detached
- Spacious Kitchen/Diner
- Four Bedrooms
- Two Bathrooms
- Off-Street Parking
- Great Location



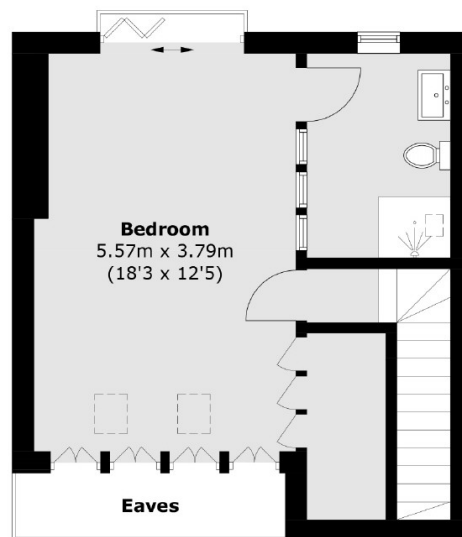




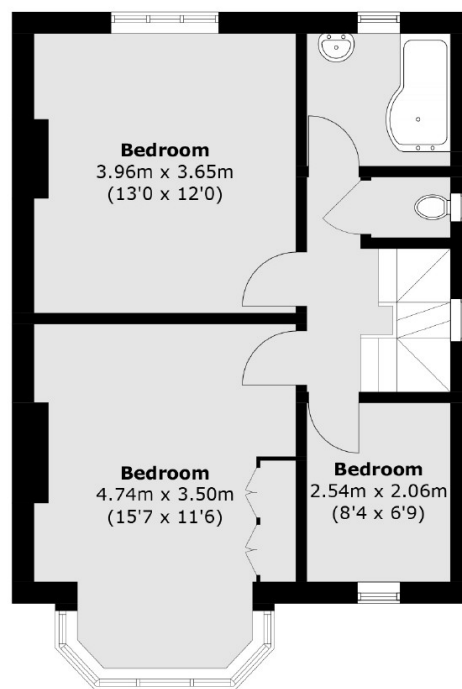
Chumleigh Walk, Surbiton, KT5



Ground Floor



Second Floor



First Floor

Total area (approx.): 174.8 sq. m (1,881.5 sq. ft)
(Excluding Eaves)