



Fairway, Costessey, Norwich, NR8 5HE

welcome to

Fairway, Costessey Norwich

Discover a fantastic opportunity to own a charming two-bedroom end-terraced house nestled in the sought-after community of Queens Hill. This thoughtfully laid-out home boasts a spacious lounge, a bright kitchen-diner perfect for everyday meals.



Cloakroom

Toilet, wash hand basin and vinyl flooring.

Lounge

14' 8" x 8' 8" (4.47m x 2.64m)

Double glazed window to front and double glazed door to rear, carpeted flooring and radiator.

Kitchen

14' 8" max x 11' 7" max (4.47m max x 3.53m max)

Double glazed windows to front and rear aspects, range of wall and base units, oven, sink, boiler, wooden flooring and radiator.

First Floor

Bedroom One

10' 7" x 8' 9" (3.23m x 2.67m)

Double glazed window to front aspect, carpeted flooring, storage cupboard, radiator and door to:

Ensuite

Double glazed window to rear aspect, shower cubicle, wash hand basin, toilet, vinyl flooring and radiator.

Bedroom Two

14' 8" x 9' 3" (4.47m x 2.82m)

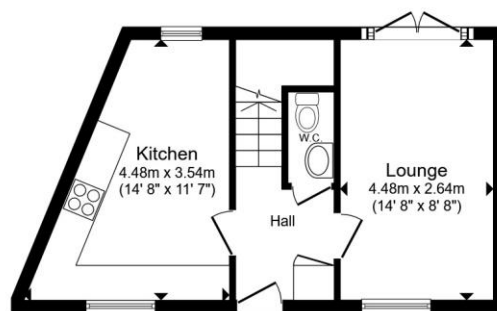
Double glazed windows to front and rear aspects, carpeted flooring and radiator.

Bathroom

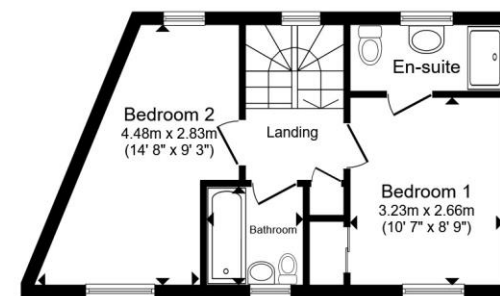
Double glazed window to front, bath tub, toilet, wash hand basin, vinyl flooring and radiator.

Exterior

Rear garden mainly laid to lawn with patio area. Two allocated parking spaces.



Ground Floor



First Floor

Total floor area 63.9 m² (688 sq.ft.) approx

This floor plan is for illustrative purposes only. It is not drawn to scale. Any measurements, floor areas (including any total floor area), openings and orientation are approximate. No details are guaranteed, they cannot be relied upon for any purpose and they do not form part of any agreement. No liability is taken for any error, omission or misstatement. A party must rely upon its own inspection(s). Powered by www.propertybox.io


william
h brown



view this property online williamhbrown.co.uk/Property/NOR143877



welcome to

Fairway, Costessey Norwich

- Perfect first time buy or investment
- Highly sought after location of Queens Hill
- Well-presented throughout
- Enclosed south-facing garden
- Two allocated parking spaces

Tenure: Freehold EPC Rating: B

Council Tax Band: B

guide price

£220,000



Please note the marker reflects the postcode not the actual property

view this property online williamhbrown.co.uk/Property/NOR143877



Property Ref:
NOR143877 - 0002

1. MONEY LAUNDERING REGULATIONS Intending purchasers will be asked to produce identification documentation at a later stage and we would ask for your co-operation in order that there is no delay in agreeing the sale. 2. These particulars do not constitute part or all of an offer or contract. 3. The measurements indicated are supplied for guidance only and as such must be considered incorrect. Potential buyers are advised to recheck measurements before committing to any expense. 4. We have not tested any apparatus, equipment, fixtures or services and it is in the buyers interest to check the working condition of any appliances. 5. Where an EPC, or a Home Report (Scotland only) is held for this property, it is available for inspection at the branch by appointment. If you require a printed version of a Home Report, you will need to pay a reasonable production charge reflecting printing and other costs. 6. We are not able to offer an opinion either written or verbal on the content of these reports and this must be obtained from your legal representative. 7. Whilst we take care in preparing these reports, a buyer should ensure that his/her legal representative confirms as soon as possible all matters relating to title including the extent and boundaries of the property and other important matters before exchange of contracts.

William H Brown is a trading name of Sequence (UK) Limited which is registered in England and Wales under company number 4268443, Registered Office is Cumbria House, 16-20 Hockliffe Street, Leighton Buzzard, Bedfordshire, LU7 1GN. VAT Registration Number is 500 2481 05.



william h brown



01603 760044



norwich@williamhbrown.co.uk



5 Bank Plain, NORWICH, Norfolk, NR2 4SF



williamhbrown.co.uk