



## HEWETT STREET, EC2A

£3,400 pcm

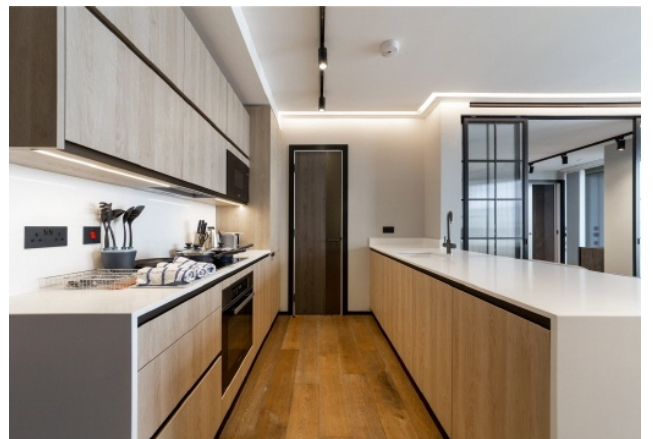
Introducing 'The Stage', a luxurious living complex located in the heart of Shoreditch, East London. The Stage offers a range of upscale apartments that rise 37 levels high. With world-class interior design by Nicola Fontanella of Argent Design and bespoke residence management provided by Rhodium, The Stage is the ultimate showcase for luxury living in

- Available 21st July
- Luxury Development
- One Bedroom, two bathroom
- 32nd floor Sky lounge
- Over 550 Sq. ft
- Liverpool Street



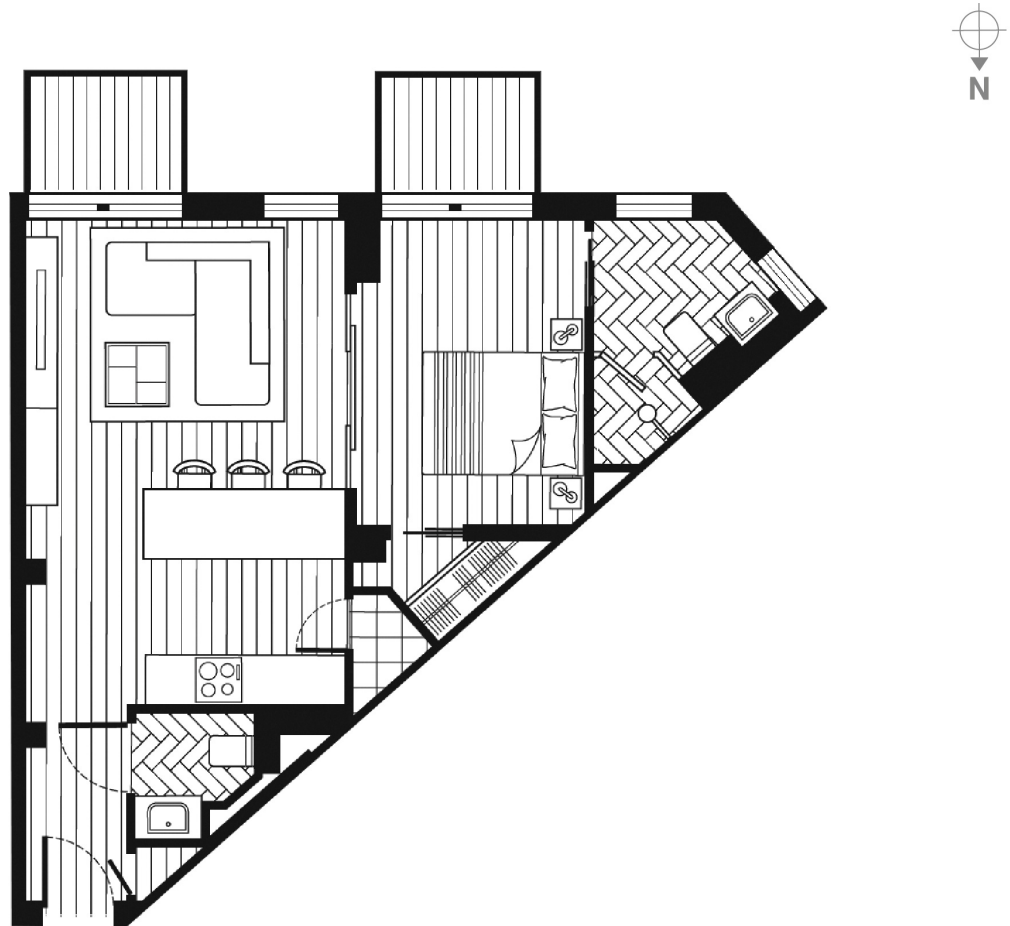
## ABOUT THE HOME

Transportation connections around The Stage are exceptional, with easy access to all of London's principal destinations, including those for domestic and international air travel. From Liverpool Street, just a 5-minute walk away, there are 7 tube, rail, and overground services available, making it easy to get around the city and beyond. The development is also located near all of London's principal universities and amid the third largest tech cluster in the world, adjacent to the new Amazon HQ. Don't miss out on this unique opportunity to be the first to live in luxury at The Stage. Call us today to avoid missing out! Don't miss out on this unique opportunity to be the first to live in luxury at The Stage. Call us today to avoid missing out!





**1 bed apartment**



**Approximate gross internal area: 546 sq ft / 51sqm**

Whilst every attempt has been made to ensure the accuracy of the floorplan contained here, measurements of doors, windows, rooms and any other items are approximate. No responsibility is taken for any error, omission, or mis-statement. This plan is for illustrative purposes only and should be used as such by any prospective purchaser. The services, systems and appliances shown have not been tested and no guarantee as to their operability or efficiency can be given.  
© Copyright LiFE Residential 2021.

**LiFE RESIDENTIAL**

71 Drayton Park, London, N5

1BF

Sales: 020 3838 8666

Lettings: 020 7359 4488

Energy Rating: B. We aim to make our particulars both accurate and reliable. However they are not guaranteed; nor do they form part of an offer or contract. If you require clarification on any points then please contact us, especially if you're traveling some distance to view. Please note that appliances and heating systems have not been tested and therefore no warranties can be given as to their good working order.